

# Basic Report

---



**Title:** Yui Post Station  
**Date:** about 1842  
**Primary Maker:** Utagawa Hiroshige I  
**Medium:** woodblock print



**Title:** Okitsu  
**Date:** about 1842  
**Primary Maker:** Utagawa Hiroshige I  
**Medium:** woodblock print



**Title:** Ejiri: Tago on the Sea and Mio no Matsubara  
**Date:** about 1842  
**Primary Maker:** Utagawa Hiroshige I  
**Medium:** woodblock print; ink and color on paper



**Title:** Fuchu  
**Date:** about 1842  
**Primary Maker:** Utagawa Hiroshige I  
**Medium:** woodblock print; ink and color on paper



**Title:** Shirasuka: The Road Leading Up Sea View Hill  
**Date:** about 1842  
**Primary Maker:** Utagawa Hiroshige I  
**Medium:** woodblock print



**Title:** Futagawa Post Station  
**Date:** about 1842  
**Primary Maker:** Utagawa Hiroshige I  
**Medium:** woodblock print; ink and color on paper



**Title:** Yoshida Post Station  
**Date:** about 1842  
**Primary Maker:** Utagawa Hiroshige I  
**Medium:** woodblock print



**Title:** Goyu Post Station  
**Date:** about 1842  
**Primary Maker:** Utagawa Hiroshige I  
**Medium:** woodblock print; ink and color on paper



**Title:** The Evening Glow at Seta  
**Date:** about 1830  
**Primary Maker:** Utagawa Hiroshige I  
**Medium:** woodblock print



**Title: Returning Sails at Yabase**

**Date:** about 1830

**Primary Maker:** Utagawa Hiroshige I

**Medium:** woodblock print



**Title: Wild Geese Alighting at Katata**

**Date:** about 1830

**Primary Maker:** Utagawa Hiroshige I

**Medium:** woodblock print

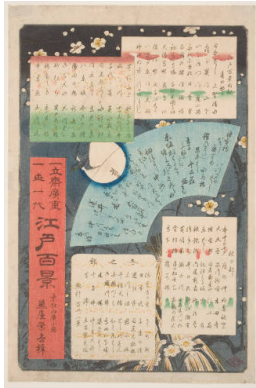


**Title: Lingering Snow on Mount Hira**

**Date:** about 1830

**Primary Maker:** Utagawa Hiroshige I

**Medium:** woodblock print



**Title: Title Page for the series One Hundred Famous Views of Edo (Meisho Edo hyakkei)**

**Date:** about 1858

**Primary Maker:** Utagawa Hiroshige I

**Medium:** woodblock print; ink and color on paper



**Title: Nihonbashi, Clearing After Snow (Nihonbashi yukibare)**

**Date:** 1856, 5th month

**Primary Maker:** Utagawa Hiroshige I

**Medium:** woodblock print; ink and color on paper

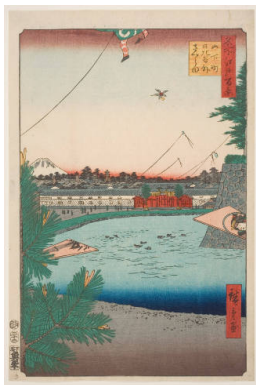


**Title: Kasumigaseki**

**Date:** 1857, 1st month

**Primary Maker:** Utagawa Hiroshige I

**Medium:** woodblock print; ink and color on paper

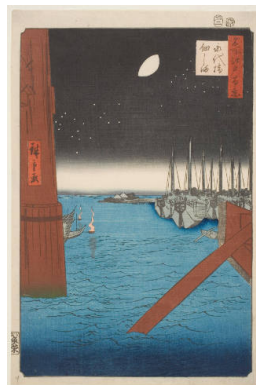


**Title: Hibiya and Soto-Sakurada from Yamashitach (Yamashitach Hibiya Soto-Sakurada)**

**Date:** 1857, 12th month

**Primary Maker:** Utagawa Hiroshige I

**Medium:** woodblock print; ink and color on paper



**Title: Tsukudajima from Eitai Bridge (Eitaibashi Tsukudajima)**

**Date:** 1857, 2nd month

**Primary Maker:** Utagawa Hiroshige I

**Medium:** woodblock print; ink and color on paper



**Title: Ryugoku Ekin and Moto-Yanagibashi Bridge (Ryugoku Ekin Moto-Yanagibashi Bridge)**

**Date:** 1857, intercalary 5th month

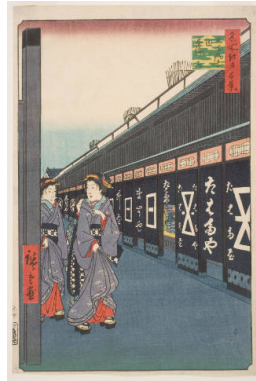
**Primary Maker:** Utagawa Hiroshige I

**Medium:** woodblock print; ink and color on paper





**Title:** Hatsune Riding Grounds, Bakuro-ch (Bakuro-ch Hatsune no Baba)  
**Date:** 1857, 9th month  
**Primary Maker:** Utagawa Hiroshige I  
**Medium:** woodblock print; ink and color on paper



**Title:** Cotton-goods Lane at denma-ch (denmach momendana)  
**Date:** 1858, 4th month  
**Primary Maker:** Utagawa Hiroshige I  
**Medium:** woodblock print; ink and color on paper



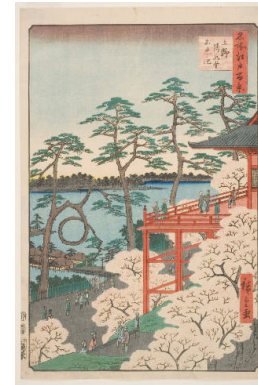
**Title:** Suruga-ch (Surugach)  
**Date:** 1856, 9th month  
**Primary Maker:** Utagawa Hiroshige I  
**Medium:** woodblock print; ink and color on paper



**Title:** Yatsukji, inside Suijikai Gate (Suijikai uchi Yatsukji)  
**Date:** 1857, 11th month  
**Primary Maker:** Utagawa Hiroshige I  
**Medium:** woodblock print; ink and color on paper



**Title:** Dawn at Kanda Myjin Shrine (Kanda Myjin akebono no kei)  
**Date:** 1857, 9th month  
**Primary Maker:** Utagawa Hiroshige I  
**Medium:** woodblock print; ink and color on paper



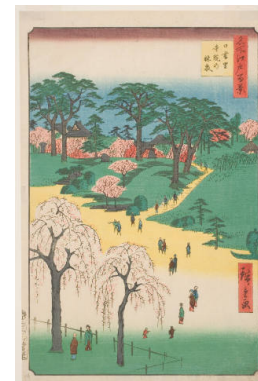
**Title:** Kiyomizu Hall and Shinobazu Pond at Ueno (Ueno Kiyomizud Shinobazu no ike)  
**Date:** 1856, 4th month  
**Primary Maker:** Utagawa Hiroshige I  
**Medium:** woodblock print; ink and color on paper



**Title:** Ueno Yamashita  
**Date:** 1858, 10th month  
**Primary Maker:** Utagawa Hiroshige I  
**Medium:** woodblock print; ink and color on paper



**Title:** Shitaya Hirokji  
**Date:** 1856, 9th month  
**Primary Maker:** Utagawa Hiroshige I  
**Medium:** woodblock print; ink and color on paper



**Title:** Temple Gardens at Nippori (Nippori jiin no rinsen)  
**Date:** 1857, 2nd month  
**Primary Maker:** Utagawa Hiroshige I  
**Medium:** woodblock print; ink and color on paper



**Title:** Suwa Bluff,  
Nippori (Nippori,  
Suwanodai)  
**Date:** 1856, 5th month  
**Primary Maker:** Utagawa  
Hiroshige I  
**Medium:** woodblock print; ink  
and color on paper



**Title:** Flower Pavilion,  
Dango Slope, Sendagi  
(Sendagi Dangozaka  
Hanayashiki)  
**Date:** 1856, 5th month  
**Primary Maker:** Utagawa  
Hiroshige I  
**Medium:** woodblock print; ink  
and color on paper



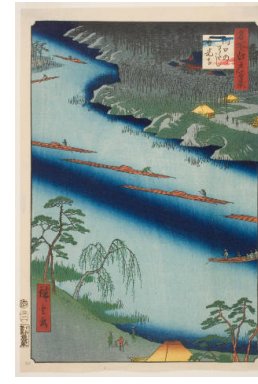
**Title:** View to the North  
from Asuka Hill  
(Asukayama kita no chb)  
**Date:** 1856, 5th month  
**Primary Maker:** Utagawa  
Hiroshige I  
**Medium:** woodblock print; ink  
and color on paper



**Title:** The Inari Shrine at  
ji (ji Inari no yashiro)  
**Date:** 1857, 9th month  
**Primary Maker:** Utagawa  
Hiroshige I  
**Medium:** woodblock print; ink  
and color on paper



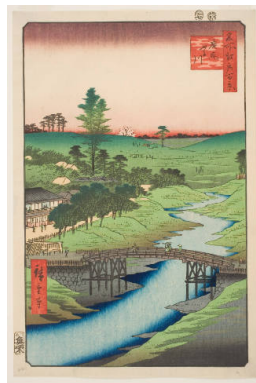
**Title:** Dam on the  
Otonashi River at ji,  
Popularly Known as  
“The Great Waterfall” (ji  
Otonashigawa entai,  
sezoku taki to tonau)  
**Date:** 1857, 2nd month  
**Primary Maker:** Utagawa  
Hiroshige I  
**Medium:** woodblock print; ink  
and color on paper



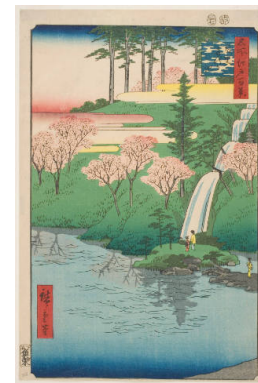
**Title:** The Kawaguchi  
Ferry and Zenkji Temple  
(Kawaguchi no watashi  
Zenkji)  
**Date:** 1857, 2nd month  
**Primary Maker:** Utagawa  
Hiroshige I  
**Medium:** woodblock print; ink  
and color on paper



**Title:** Mount Atago,  
Shiba (Shiba Atagoyama)  
**Date:** 1857, 8th month  
**Primary Maker:** Utagawa  
Hiroshige I  
**Medium:** woodblock print; ink  
and color on paper



**Title:** Furukawa River,  
Hiroo (Hiroo Furukawa)  
**Date:** 1856, 7th month  
**Primary Maker:** Utagawa  
Hiroshige I  
**Medium:** woodblock print; ink  
and color on paper



**Title:** Chiyogaike Pond  
at Meguro (Meguro  
Chiyogaike)  
**Date:** 1856, 7th month  
**Primary Maker:** Utagawa  
Hiroshige I  
**Medium:** woodblock print; ink  
and color on paper

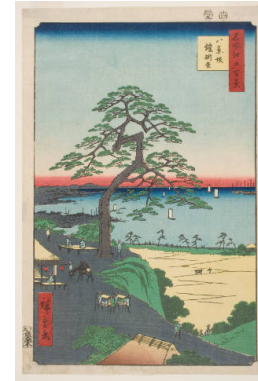




**Title:** The New Fuji in Meguro (Meguro Shin-Fuji)  
**Date:** 1857, 4th month  
**Primary Maker:** Utagawa Hiroshige I  
**Medium:** woodblock print; ink and color on paper



**Title:** The Original Fuji in Meguro (Meguro Moto-Fuji)  
**Date:** 1857, 4th month  
**Primary Maker:** Utagawa Hiroshige I  
**Medium:** woodblock print; ink and color on paper



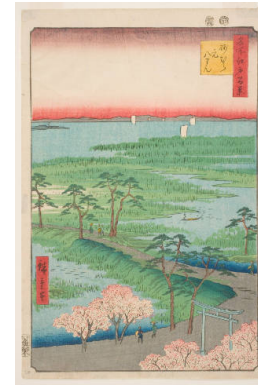
**Title:** The Armor-Hanging Pine at Hakkeizaka (Hakkeizaka Yoroikakematsu)  
**Date:** 1856, 5th month  
**Primary Maker:** Utagawa Hiroshige I  
**Medium:** woodblock print; ink and color on paper



**Title:** Plum Garden at Kamata (Kamata no umezono)  
**Date:** 1857, 2nd month  
**Primary Maker:** Utagawa Hiroshige I  
**Medium:** woodblock print; ink and color on paper



**Title:** Gotenyama, Shinagawa (Shinagawa Gotenyama)  
**Date:** 1856, 4th month  
**Primary Maker:** Utagawa Hiroshige I  
**Medium:** woodblock print; ink and color on paper



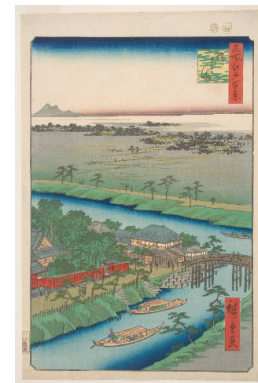
**Title:** Moto-Hachiman Shrine, Sunamura (Sunamura Motohachiman)  
**Date:** 1856  
**Primary Maker:** Utagawa Hiroshige I  
**Medium:** woodblock print; ink and color on paper



**Title:** Plum Estate at Kameido (Kameido umeyashiki)  
**Date:** 1857, 11th month  
**Primary Maker:** Utagawa Hiroshige I  
**Medium:** woodblock print; ink and color on paper



**Title:** Azuma Shrine and the Entwined Camphor (Azuma no mori Renri no azusa)  
**Date:** 1856, 7th month  
**Primary Maker:** Utagawa Hiroshige I  
**Medium:** woodblock print; ink and color on paper



**Title:** Yanagishima  
**Date:** 1857, 4th month  
**Primary Maker:** Utagawa Hiroshige I  
**Medium:** woodblock print; ink and color on paper





**Title: Towboats along the Yotsugidri Canal (Yotsugidri ysui hikifune)**

**Date:** 1857, 2nd month

**Primary Maker:** Utagawa Hiroshige I

**Medium:** woodblock print; ink and color on paper



**Title: Night View of Matsuchiyama and the San'ya Canal (Matsuchiyama San'yabori yakei)**

**Date:** 1857, 8th month

**Primary Maker:** Utagawa Hiroshige I

**Medium:** woodblock print; ink and color on paper



**Title: Suijin Shrine and Massaki on the Sumida River (Sumidagawa Suijin no mori Massaki)**

**Date:** 1857, 8th month

**Primary Maker:** Utagawa Hiroshige I

**Medium:** woodblock print; ink and color on paper



**Title: View from Massaki of Suijin Shrine, Uchigawa Inlet, and Sekiya (Massaki atari yori Suijin no mori Uchigawa Sekiya no sato o miru zu)**

**Date:** 1857, 8th month

**Primary Maker:** Utagawa Hiroshige I

**Medium:** woodblock print; ink and color on paper



**Title: Tile Kilns and Hashiba Ferry, Sumida River (Sumidagawa Hashiba no watashi kawaragama)**

**Date:** 1857, 4th month

**Primary Maker:** Utagawa Hiroshige I

**Medium:** woodblock print; ink and color on paper



**Title: Dawn inside the Yoshiwara (Kakuch shinonome)**

**Date:** 1857, 4th month

**Primary Maker:** Utagawa Hiroshige I

**Medium:** woodblock print; ink and color on paper

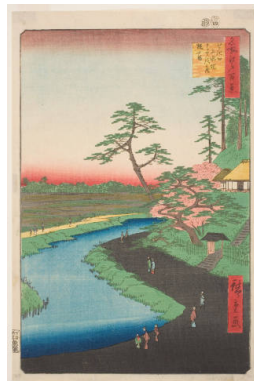


**Title: Distant View of Kinryzan Temple and Azuma Bridge (Azumabashi Kinryzan enb)**

**Date:** 1857, 8th month

**Primary Maker:** Utagawa Hiroshige I

**Medium:** woodblock print; ink and color on paper



**Title: Bash's Hermitage and Camellia Hill on the Kanda Aqueduct at Sekiguchi (Sekiguchi jsuibata Bashan Tsubakiyama)**

**Date:** 1857, 4th month

**Primary Maker:** Utagawa Hiroshige I

**Medium:** woodblock print; ink and color on paper



**Title: Ichigaya Hachiman Shrine (Ichigaya Hachiman)**

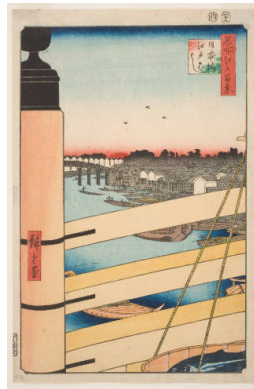
**Date:** 1858, 10th month

**Primary Maker:** Utagawa Hiroshige I

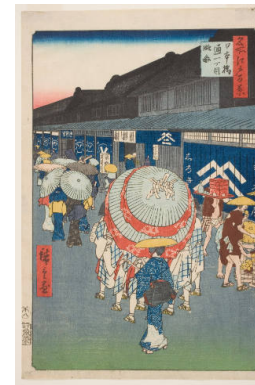
**Medium:** woodblock print; ink and color on paper



**Title:** Blossoms on the Tama River Embankment (Tamagawa zutsumi no hana)  
**Date:** 1856, 2nd month  
**Primary Maker:** Utagawa Hiroshige I  
**Medium:** woodblock print; ink and color on paper



**Title:** Nihon Bridge and Edo Bridge (Nihonbashi Edobashi)  
**Date:** 1857, 12th month  
**Primary Maker:** Utagawa Hiroshige I  
**Medium:** woodblock print; ink and color on paper



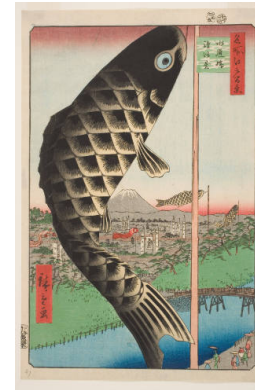
**Title:** View of Nihonbashi Tri 1-chme (Nihonbashi Tri itchme ryakuzu)  
**Date:** 1858, 8th month  
**Primary Maker:** Utagawa Hiroshige I  
**Medium:** woodblock print; ink and color on paper



**Title:** Yatsumi Bridge (Yatsumi no hashi)  
**Date:** 1856, 8th month  
**Primary Maker:** Utagawa Hiroshige I  
**Medium:** woodblock print; ink and color on paper



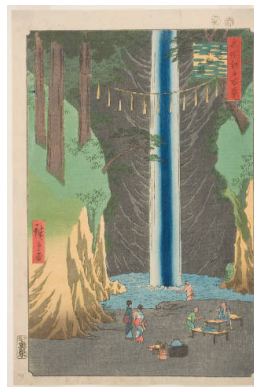
**Title:** Yoroi Ferry, Koamich (Yoroi no watashi Koamich)  
**Date:** 1857, 10th month  
**Primary Maker:** Utagawa Hiroshige I  
**Medium:** woodblock print; ink and color on paper



**Title:** Suid Bridge and Surugadai (Suidbashi Surugadai)  
**Date:** 1857, intercalary 5th month  
**Primary Maker:** Utagawa Hiroshige I  
**Medium:** woodblock print; ink and color on paper



**Title:** Seid and Kanda River from Shhei Bridge (Shheibashi Seid Kandagawa)  
**Date:** 1857, 9th month  
**Primary Maker:** Utagawa Hiroshige I  
**Medium:** woodblock print; ink and color on paper



**Title:** The Fud Falls at ji (ji Fud no taki)  
**Date:** 1857, 9th month  
**Primary Maker:** Utagawa Hiroshige I  
**Medium:** woodblock print; ink and color on paper



**Title:** Kumano Jnisha Shrine, Tsunohazu, Popularly Known as Jnis (Tsunohazu Kumano Jnisha zokush Jnis)  
**Date:** 1856, 7th month  
**Primary Maker:** Utagawa Hiroshige I  
**Medium:** woodblock print; ink and color on paper

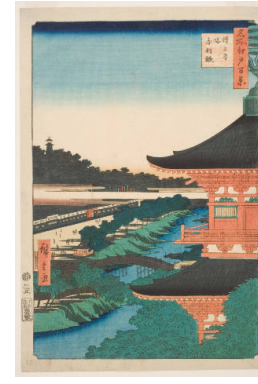




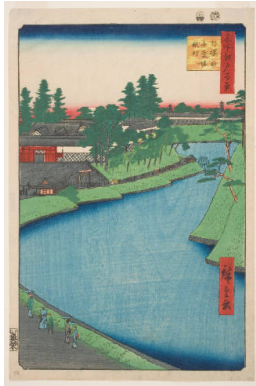
**Title:** Sann Festival Procession at Kjimachi 1-chme (Kjimachi itchme Sann Matsuri nerikomi)  
**Date:** 1856, 7th month  
**Primary Maker:** Utagawa Hiroshige I  
**Medium:** woodblock print; ink and color on paper



**Title:** The Paulownia Grove at Akasaka (Akasaka Kiribatake)  
**Date:** 1856, 4th month  
**Primary Maker:** Utagawa Hiroshige I  
**Medium:** woodblock print; ink and color on paper



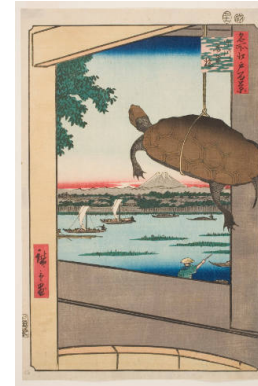
**Title:** Ziji Pagoda and Akabane (Zijit Akabane)  
**Date:** 1857, 1st month  
**Primary Maker:** Utagawa Hiroshige I  
**Medium:** woodblock print; ink and color on paper



**Title:** Benkei Moat from Soto-Sakurada to Kjimachi (Soto Sakurada Benkeibori Kjimachi)  
**Date:** 1856, 5th month  
**Primary Maker:** Utagawa Hiroshige I  
**Medium:** woodblock print; ink and color on paper



**Title:** Sumiyoshi Festival at Tsukudajima (Tsukudajima Sumiyoshi no matsuri)  
**Date:** 1857, 7th month  
**Primary Maker:** Utagawa Hiroshige I  
**Medium:** woodblock print; ink and color on paper



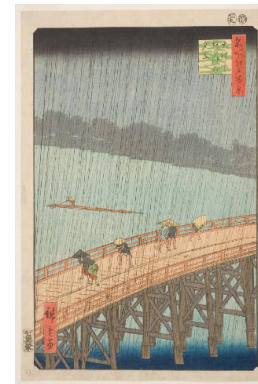
**Title:** Mannen Bridge at Fukagawa (Fukagawa Mannenbashi)  
**Date:** 1857, 11th month  
**Primary Maker:** Utagawa Hiroshige I  
**Medium:** woodblock print; ink and color on paper



**Title:** Mitsumata Wakarenofuchi  
**Date:** 1857, 2nd month  
**Primary Maker:** Utagawa Hiroshige I  
**Medium:** woodblock print; ink and color on paper



**Title:** Rygoke Bridge and the Great Riverbank (Rykokubashi kawabata)  
**Date:** 1856, 8th month  
**Primary Maker:** Utagawa Hiroshige I  
**Medium:** woodblock print; ink and color on paper

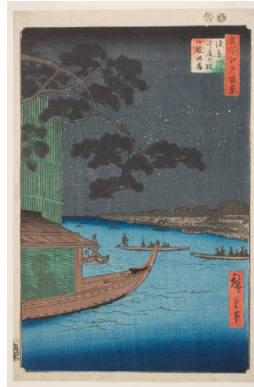


**Title:** Sudden Shower over Shin-hashii Bridge and Atake (hashi Atake no ydachi)  
**Date:** 1857, 9th month  
**Primary Maker:** Utagawa Hiroshige I  
**Medium:** woodblock print; ink and color on paper





**Title:** Asakusa River, Great Riverbank, Miyato River (Asakusagawa kawabata Miyatogawa)  
**Date:** 1857, 7th month  
**Primary Maker:** Utagawa Hiroshige I  
**Medium:** woodblock print; ink and color on paper



**Title:** Pine of Success and Oumayagashi, Asakusa River (Asakusagawa Shubi no matsu Oumayagashi)  
**Date:** 1856, 8th month  
**Primary Maker:** Utagawa Hiroshige I  
**Medium:** woodblock print; ink and color on paper



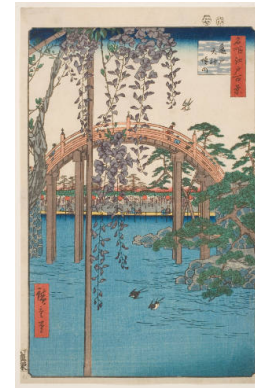
**Title:** Komagata Hall and Azuma Bridge (Komagata Azumabashi)  
**Date:** 1857, 1st month  
**Primary Maker:** Utagawa Hiroshige I  
**Medium:** woodblock print; ink and color on paper



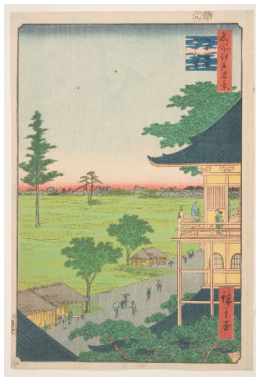
**Title:** Ayase River and Kanegafuchi (Ayasegawa Kanegafuchi)  
**Date:** 1857, 7th month  
**Primary Maker:** Utagawa Hiroshige I  
**Medium:** woodblock print; ink and color on paper



**Title:** Horikiri Iris Garden (Horikiri no hanashbu)  
**Date:** 1857, intercalary 5th month  
**Primary Maker:** Utagawa Hiroshige I  
**Medium:** woodblock print; ink and color on paper



**Title:** Inside Kameido Tenjin Shrine (Kameido Tenjin keidai)  
**Date:** 1856, 7th month  
**Primary Maker:** Utagawa Hiroshige I  
**Medium:** woodblock print; ink and color on paper



**Title:** Spiral Hall, Five Hundred Rakan Temple (Gohyaku Rakan Sazaid)  
**Date:** 1857, 8th month  
**Primary Maker:** Utagawa Hiroshige I  
**Medium:** woodblock print; ink and color on paper



**Title:** The Hall of Thirty-three Bays at Fukagawa (Fukagawa Sanjsangend)  
**Date:** 1857, 8th month  
**Primary Maker:** Utagawa Hiroshige I  
**Medium:** woodblock print; ink and color on paper



**Title:** Sakasai Ferry (Sakasai no watashi)  
**Date:** 1857, 2nd month  
**Primary Maker:** Utagawa Hiroshige I  
**Medium:** woodblock print; ink and color on paper



**Title:** Open Garden at Fukagawa Hachiman Shrine (Fukagawa Hachiman yamabiraki)  
**Date:** 1857, 8th month  
**Primary Maker:** Utagawa Hiroshige I  
**Medium:** woodblock print; ink and color on paper



**Title:** Nakagawa River Mouth (Nakagawaguchi)  
**Date:** 1857, 2nd month  
**Primary Maker:** Utagawa Hiroshige I  
**Medium:** woodblock print; ink and color on paper



**Title:** Scattered Pines, Tone River (Tonegawa Barabara-matsu)  
**Date:** 1856, 8th month  
**Primary Maker:** Utagawa Hiroshige I  
**Medium:** woodblock print; ink and color on paper



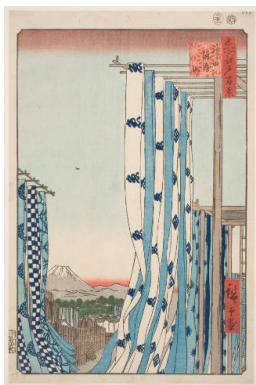
**Title:** Haneda Ferry and Benten Shrine (Haneda no watashi Benten no yashiro)  
**Date:** 1858, 8th month  
**Primary Maker:** Utagawa Hiroshige I  
**Medium:** woodblock print; ink and color on paper



**Title:** The City Flourishing, Tanabata Festival (Shich han'ei Tanabata Matsuri)  
**Date:** 1857, 7th month  
**Primary Maker:** Utagawa Hiroshige I  
**Medium:** woodblock print; ink and color on paper



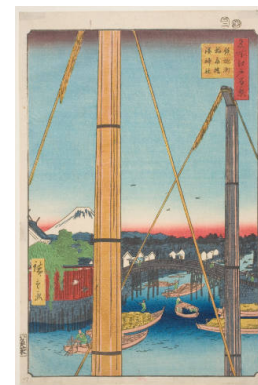
**Title:** Silk-goods Lane, denmach (denmach gofukudana)  
**Date:** 1858, 7th month  
**Primary Maker:** Utagawa Hiroshige I  
**Medium:** woodblock print; ink and color on paper



**Title:** Dyers' Quarter, Kanda (Kanda Kon'ya-ch)  
**Date:** 1857, 11th month  
**Primary Maker:** Utagawa Hiroshige I  
**Medium:** woodblock print; ink and color on paper



**Title:** Bamboo Yards, Kybashi Bridge (Kybashi Takegashi)  
**Date:** 1857, 12th month  
**Primary Maker:** Utagawa Hiroshige I  
**Medium:** woodblock print; ink and color on paper



**Title:** Inari Bridge and Minato Shrine at Teppzu (Teppzu Inaribashi Minato Jinja)  
**Date:** 1857, 2nd month  
**Primary Maker:** Utagawa Hiroshige I  
**Medium:** woodblock print; ink and color on paper

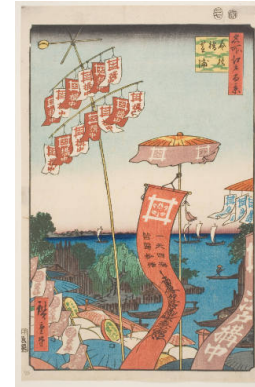




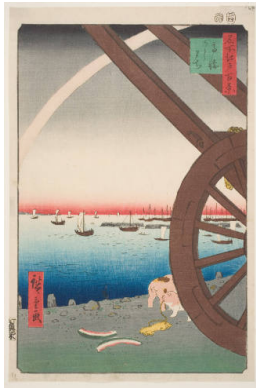
**Title:** Teppzu and Tsukiji Honganji Temple (Teppzu Tsukiji Monzeki)  
**Date:** 1858, 7th month  
**Primary Maker:** Utagawa Hiroshige I  
**Medium:** woodblock print; ink and color on paper



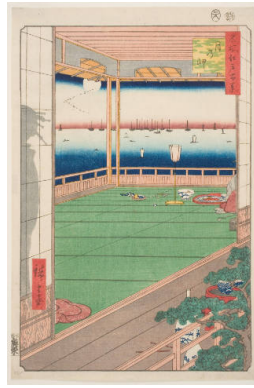
**Title:** Shiba Shinmei Shrine and Ziji Temple (Shiba Shinmei Ziji)  
**Date:** 1858, 7th month  
**Primary Maker:** Utagawa Hiroshige I  
**Medium:** woodblock print; ink and color on paper



**Title:** Kanasugi Bridge and Shibaura (Kanasugibashi Shibaura)  
**Date:** 1857, 7th month  
**Primary Maker:** Utagawa Hiroshige I  
**Medium:** woodblock print; ink and color on paper



**Title:** Ushimachi in the Takanawa District (Takanawa Ushimachi)  
**Date:** 1857, 4th month  
**Primary Maker:** Utagawa Hiroshige I  
**Medium:** woodblock print; ink and color on paper



**Title:** Moon-Viewing Point (Tsuki no misaki)  
**Date:** 1857, 8th month  
**Primary Maker:** Utagawa Hiroshige I  
**Medium:** woodblock print; ink and color on paper



**Title:** Shinagawa Susaki  
**Date:** 1856, 4th month  
**Primary Maker:** Utagawa Hiroshige I  
**Medium:** woodblock print; ink and color on paper



**Title:** Old Man's Tea Shop at Meguro (Meguro Jijigachaya)  
**Date:** 1857, 4th month  
**Primary Maker:** Utagawa Hiroshige I  
**Medium:** woodblock print; ink and color on paper



**Title:** Kinokuni Hill and Distant View of Akasaka Tameike (Kinokunizaka Akasaka Tameike enkei)  
**Date:** 1857, 9th month  
**Primary Maker:** Utagawa Hiroshige I  
**Medium:** woodblock print; ink and color on paper

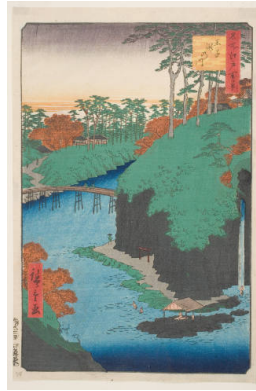


**Title:** Nait Shinjuku at Yotsuya (Yotsuya Nait Shinjuku)  
**Date:** 1857, 11th month  
**Primary Maker:** Utagawa Hiroshige I  
**Medium:** woodblock print; ink and color on paper

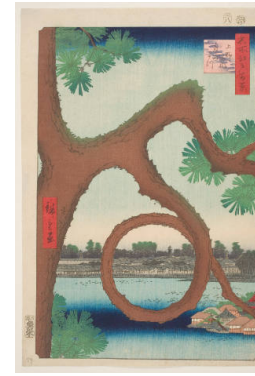




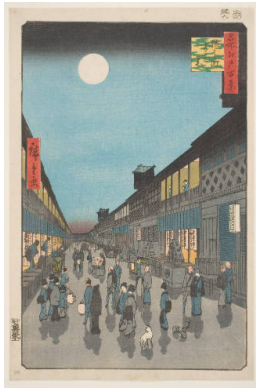
**Title:** Benten Shrine at Inokashira Pond (Inokashira no ike Benten no yashiro)  
**Date:** 1856, 4th month  
**Primary Maker:** Utagawa Hiroshige I  
**Medium:** woodblock print; ink and color on paper



**Title:** Takinogawa at ji (ji Takinogawa)  
**Date:** 1856, 4th month  
**Primary Maker:** Utagawa Hiroshige I  
**Medium:** woodblock print; ink and color on paper



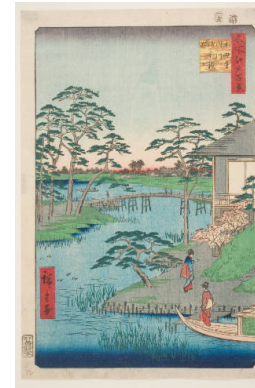
**Title:** Moon Pine, Ueno (Ueno sannai Tsuki no matsu)  
**Date:** 1857, 8th month  
**Primary Maker:** Utagawa Hiroshige I  
**Medium:** woodblock print; ink and color on paper



**Title:** Night View of Saruwakamachi (Saruwakamachi yoru no kei)  
**Date:** 1856, 9th month  
**Primary Maker:** Utagawa Hiroshige I  
**Medium:** woodblock print; ink and color on paper



**Title:** Inside Akiba Shrine at Ukeji (Ukeji Akiba no Keidai)  
**Date:** 1857, 8th month  
**Primary Maker:** Utagawa Hiroshige I  
**Medium:** woodblock print; ink and color on paper



**Title:** Mokuboji Temple, Uchigawa Inlet, Gozensaihata (Mokuboji Uchigawa Gozensaihata)  
**Date:** 1857, 12th month  
**Primary Maker:** Utagawa Hiroshige I  
**Medium:** woodblock print; ink and color on paper



**Title:** Nijuku Ferry (Nijuku no watashi)  
**Date:** 1857, 2nd month  
**Primary Maker:** Utagawa Hiroshige I  
**Medium:** woodblock print; ink and color on paper



**Title:** Maple Trees at Mama, Tekona Shrine and Linked Bridge (Mama no momiji Tekona no yashiro Tsugihashi)  
**Date:** 1857, 1st month  
**Primary Maker:** Utagawa Hiroshige I  
**Medium:** woodblock print; ink and color on paper



**Title:** View of Knodai and the Tone River (Knodai Tonegawa fkei)  
**Date:** 1856, 5th month  
**Primary Maker:** Utagawa Hiroshige I  
**Medium:** woodblock print; ink and color on paper



**Title: Horie and Nekozane (Horie Nekozane)**

**Date:** 1856, 2nd month

**Primary Maker:** Utagawa Hiroshige I

**Medium:** woodblock print; ink and color on paper



**Title: The Five Pines on the Onagi Canal (Onagigawa Gohonmatsu)**

**Date:** 1856, 7th month

**Primary Maker:** Utagawa Hiroshige I

**Medium:** woodblock print; ink and color on paper



**Title: Fireworks at Rygoku (Rygoku hanabi)**

**Date:** 1858, 8th month

**Primary Maker:** Utagawa Hiroshige I

**Medium:** woodblock print; ink and color on paper



**Title: Kinryzan Temple, Asakusa (Asakusa Kinryzan)**

**Date:** 1856, 7th month

**Primary Maker:** Utagawa Hiroshige I

**Medium:** woodblock print; ink and color on paper

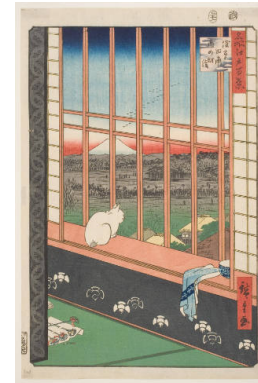


**Title: Nihon Embankment at Yoshiwara (Yoshiwara Nihonzutsumi)**

**Date:** 1857, 4th month

**Primary Maker:** Utagawa Hiroshige I

**Medium:** woodblock print; ink and color on paper



**Title: Asakusa Ricefield and Torinomachi Festival (Asakusa tanbo Torinomachi mde)**

**Date:** 1857, 11th month

**Primary Maker:** Utagawa Hiroshige I

**Medium:** woodblock print; ink and color on paper



**Title: Minowa, Kanasugi, Mikawashima**

**Date:** 1857, intercalary 5th month

**Primary Maker:** Utagawa Hiroshige I

**Medium:** woodblock print; ink and color on paper

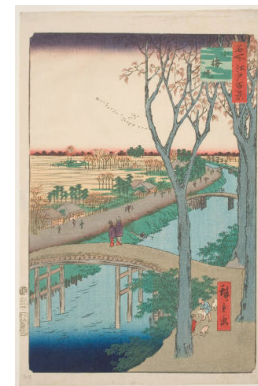


**Title: Senju Great Bridge (Senju no hashi)**

**Date:** 1856, 2nd month

**Primary Maker:** Utagawa Hiroshige I

**Medium:** woodblock print; ink and color on paper



**Title: Koume Embankment (Koumezutsumi)**

**Date:** 1857, 2nd month

**Primary Maker:** Utagawa Hiroshige I

**Medium:** woodblock print; ink and color on paper





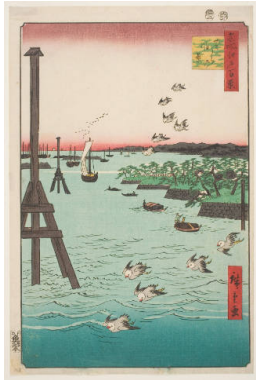
**Title:** Oumayagashi  
**Date:** 1857, 12th month  
**Primary Maker:** Utagawa Hiroshige I  
**Medium:** woodblock print; ink and color on paper



**Title:** Fukagawa Lumberyards (Fukagawa Kiba)  
**Date:** 1856, 8th month  
**Primary Maker:** Utagawa Hiroshige I  
**Medium:** woodblock print; ink and color on paper



**Title:** Fukagawa Susaki and Jmantsubo (Fukagawa Susaki Jmantsubo)  
**Date:** 1857, intercalary 5th month  
**Primary Maker:** Utagawa Hiroshige I  
**Medium:** woodblock print; ink and color on paper



**Title:** View of Shiba Coast (Shibaura no fkei)  
**Date:** 1856, 2nd month  
**Primary Maker:** Utagawa Hiroshige I  
**Medium:** woodblock print; ink and color on paper



**Title:** Minami-Shinagawa and Samezu Coast (Minami-Shinagawa Samezu kaigan)  
**Date:** 1857, 2nd month  
**Primary Maker:** Utagawa Hiroshige I  
**Medium:** woodblock print; ink and color on paper



**Title:** Robe-Hanging Pine, Senzoku Pond (Senzoku no ike Kesakakematsu)  
**Date:** 1856, 2nd month  
**Primary Maker:** Utagawa Hiroshige I  
**Medium:** woodblock print; ink and color on paper



**Title:** Meguro Drum Bridge and Sunset Hill (Meguro Taikobashi Yhinooka)  
**Date:** 1857, 4th month  
**Primary Maker:** Utagawa Hiroshige I  
**Medium:** woodblock print; ink and color on paper



**Title:** Atagoshita and Yabu Lane (Atagoshita Yabukji)  
**Date:** 1857, 12th month  
**Primary Maker:** Utagawa Hiroshige I  
**Medium:** woodblock print; ink and color on paper



**Title:** Aoi Slope, Outside Toranomom Gate (Toranomom Soto Aoizaka)  
**Date:** 1857, 11th month  
**Primary Maker:** Utagawa Hiroshige I  
**Medium:** woodblock print; ink and color on paper

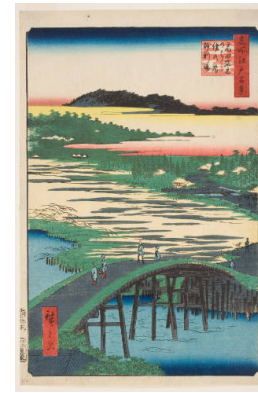




**Title:** Bikuni Bridge in Snow (Bikunibashi setch)  
**Date:** 1858, 10th month  
**Primary Maker:** Utagawa Hiroshige I  
**Medium:** woodblock print; ink and color on paper



**Title:** Takata Riding Grounds (Takata no baba)  
**Date:** 1857, 2nd month  
**Primary Maker:** Utagawa Hiroshige I  
**Medium:** woodblock print; ink and color on paper



**Title:** Sugatami Bridge, Omokage Bridge, and Jariba at Takata (Takata Sugatami-no-hashijariba)  
**Date:** 1857, 1st month  
**Primary Maker:** Utagawa Hiroshige I  
**Medium:** woodblock print; ink and color on paper



**Title:** Hilltop View, Yushima Tenjin Shrine (Yushima Tenjin sakaue tenb)  
**Date:** 1856, 4th month  
**Primary Maker:** Utagawa Hiroshige I  
**Medium:** woodblock print; ink and color on paper



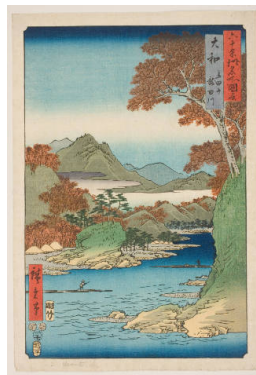
**Title:** New Year's Eve Foxfires at the Changing Tree, ji (ji Shzoku enoki misoka no kitsunebi)  
**Date:** 1857, 9th month  
**Primary Maker:** Utagawa Hiroshige I  
**Medium:** woodblock print; ink and color on paper



**Title:** Title Page and Contents with the Names of the Provinces and Places Illustrated  
**Date:** 1853, 7th month in the year of the Ox  
**Primary Maker:** Utagawa Hiroshige I  
**Medium:** woodblock print



**Title:** Yamashiro Province: The Togetsu Bridge in Arashiyama  
**Date:** 1853  
**Primary Maker:** Utagawa Hiroshige I  
**Medium:** ink and color on paper



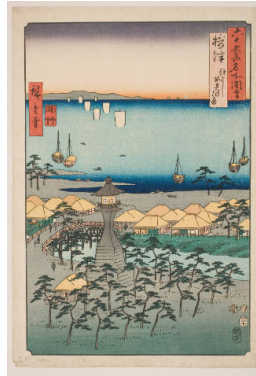
**Title:** Yamato Province: Tatsuta Mountain and Tatsuta River  
**Date:** 1853  
**Primary Maker:** Utagawa Hiroshige I  
**Medium:** ink and color on paper



**Title:** Kawachi Province: Mount Otoko in Hirakata  
**Date:** 1853  
**Primary Maker:** Utagawa Hiroshige I  
**Medium:** ink and color on paper



**Title: Province Of Izumi:  
The Beach At Takashi**  
**Date:** 7th month ox year 1853  
**Primary Maker:** Utagawa Hiroshige I  
**Medium:** woodblock print



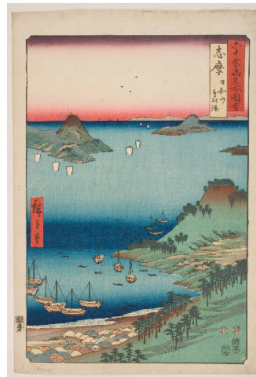
**Title: Province of Settsu:  
The Beach of Demi in  
Sumiyoshi**  
**Date:** 1853, 7th month in the  
year of the Ox  
**Primary Maker:** Utagawa  
Hiroshige I  
**Medium:** woodblock print



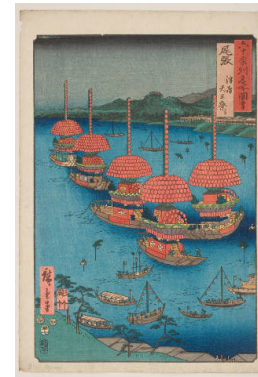
**Title: Province of Iga: A  
View of Ueno**  
**Date:** 1853, 7th month in the  
year of the Ox  
**Primary Maker:** Utagawa  
Hiroshige I  
**Medium:** woodblock print



**Title: Province of Ise:  
Tea-Houses on the Road  
over the Asakumayama  
Pass**  
**Date:** 1853, 7th month in the  
year of the Ox  
**Primary Maker:** Utagawa  
Hiroshige I  
**Medium:** woodblock print



**Title: Province of Shima:  
The Hiyoriyama Tea-  
Houses at the Toba  
Seaport**  
**Date:** 1853, 7th month in the  
year of the Ox  
**Primary Maker:** Utagawa  
Hiroshige I  
**Medium:** woodblock print



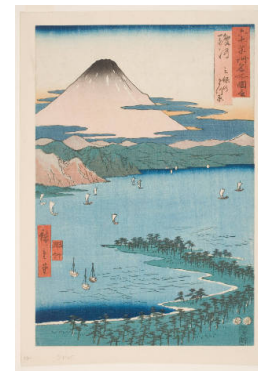
**Title: Province of Owari:  
The Tenno Festival at  
Tsushima**  
**Date:** 1853, 7th month in the  
year of the Ox  
**Primary Maker:** Utagawa  
Hiroshige I  
**Medium:** woodblock print



**Title: Mikawa Province:  
the Horai Temple  
Mountains**  
**Date:** 1853  
**Primary Maker:** Utagawa  
Hiroshige I  
**Medium:** ink and color on  
paper



**Title: Province of  
Totomi: The Tateyama  
Buddhist Temple at  
Inasa No Hosoe**  
**Date:** 1853, 8th month in the  
year of the Ox  
**Primary Maker:** Utagawa  
Hiroshige I  
**Medium:** woodblock print



**Title: Province of  
Suruga: The Low and  
Sandy Point of Land  
Called Miho No  
Matsubara**  
**Date:** 1853, 8th month in the  
year of the Ox  
**Primary Maker:** Utagawa  
Hiroshige I  
**Medium:** woodblock print





**Title: Kai Province: the Monkey Bridge**

**Date:** 1853

**Primary Maker:** Utagawa Hiroshige I

**Medium:** ink and color on paper

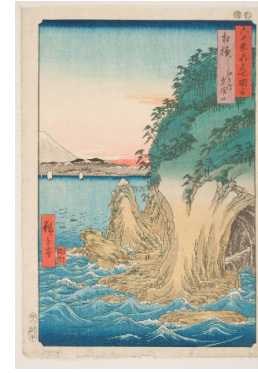


**Title: Izu Province: the Hot Springs at the Shuzen Temple**

**Date:** 1853

**Primary Maker:** Utagawa Hiroshige I

**Medium:** ink and color on paper



**Title: Sagami Province: Entrance to the Caves at Enoshima**

**Date:** 1853

**Primary Maker:** Utagawa Hiroshige I

**Medium:** ink and color on paper



**Title: Musashi Province: the Sumida River, Snowy Morning**

**Date:** 1853

**Primary Maker:** Utagawa Hiroshige I

**Medium:** ink and color on paper

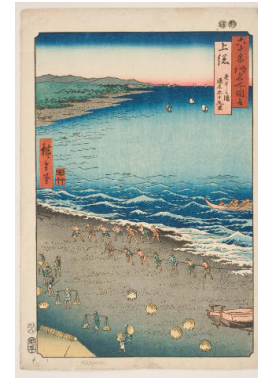


**Title: Awa: The Inner Bay at Kominato**

**Date:** 1853, 8th month in the year of the Ox

**Primary Maker:** Utagawa Hiroshige I

**Medium:** woodblock print; ink and color on paper



**Title: Kazusa: Yasashi Bay called the Ninety-Nine Mile Beach**

**Date:** 1853, 8th month in the year of the Ox

**Primary Maker:** Utagawa Hiroshige I

**Medium:** woodblock print

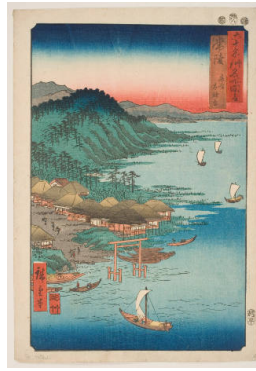


**Title: Shimosa: Choshi Beach - The Outer Bay**

**Date:** 1853, 8th month in the year of the Ox

**Primary Maker:** Utagawa Hiroshige I

**Medium:** woodblock print

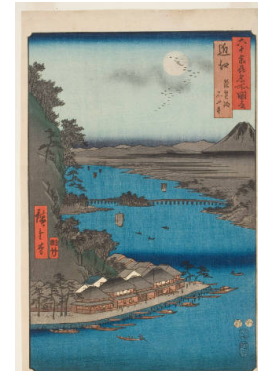


**Title: Hitachi: The Kashima Grand Shrine**

**Date:** 1853, 8th month in the year of the Ox

**Primary Maker:** Utagawa Hiroshige I

**Medium:** woodblock print; ink and color on paper



**Title: Omi Province: Lake Biwa and the Ishiyama Temple**

**Date:** 1853

**Primary Maker:** Utagawa Hiroshige I

**Medium:** ink and color on paper



**Title:** Province of Mino:  
**The Yoro Waterfall**  
**Date:** 8th month ox year 1853  
**Primary Maker:** Utagawa Hiroshige I  
**Medium:** woodblock print



**Title:** Hida Province:  
**Basket Ferry**  
**Date:** 1853  
**Primary Maker:** Utagawa Hiroshige I  
**Medium:** ink and color on paper



**Title:** Shinano Province:  
**The Moon Reflected in the Sarashina Rice Paddies and Mount Kyodai**  
**Date:** 1853  
**Primary Maker:** Utagawa Hiroshige I  
**Medium:** ink and color on paper



**Title:** Kozuke Province:  
**Mount Haruna under Snow**  
**Date:** 1853  
**Primary Maker:** Utagawa Hiroshige I  
**Medium:** ink and color on paper



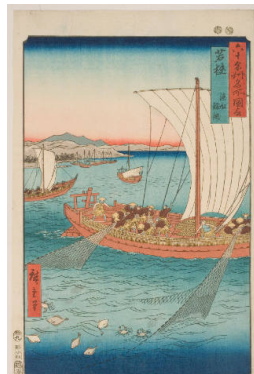
**Title:** Shimotsuke Province:  
**Mount Nikko and the Urami Waterfall**  
**Date:** 1853  
**Primary Maker:** Utagawa Hiroshige I  
**Medium:** ink and color on paper



**Title:** Mutsu: A Rough Map of Matsushima Scenery and a View of Mt. Tomi  
**Date:** 1853, 8th month in the year of the Ox  
**Primary Maker:** Utagawa Hiroshige I  
**Medium:** woodblock print



**Title:** Dewa: The Mogami River and Distant View of Gassan  
**Date:** 1853, 8th month in the year of the Ox  
**Primary Maker:** Utagawa Hiroshige I  
**Medium:** woodblock print; ink and color on paper

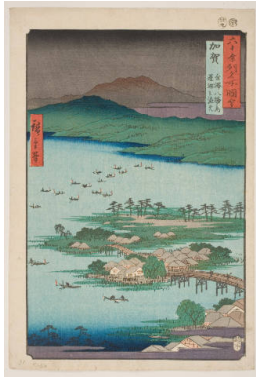


**Title:** Wakasa: Fishing Boat Trawling for Sole  
**Date:** 1853, 8th month in the year of the Ox  
**Primary Maker:** Utagawa Hiroshige I  
**Medium:** woodblock print



**Title:** Echizen: The Pine Grove of Kehi at Tsuraga  
**Date:** 1853, 9th month in the year of the Ox  
**Primary Maker:** Utagawa Hiroshige I  
**Medium:** woodblock print; ink and color on paper

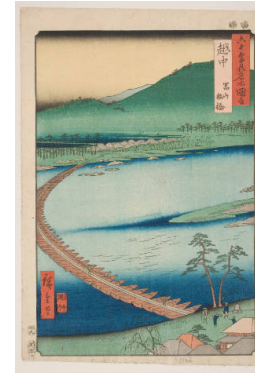




**Title:** Kaga Province:  
**The Eight Wonders of Kanazawa, The Fishing Fires on Lake Renko**  
**Date:** 1855  
**Primary Maker:** Utagawa Hiroshige I  
**Medium:** ink and color on paper



**Title:** Noto Province:  
**Waterfall Bay**  
**Date:** 1853  
**Primary Maker:** Utagawa Hiroshige I  
**Medium:** ink and color on paper



**Title:** Etchu Province:  
**Pontoon Bridge in Toyama**  
**Date:** 1853  
**Primary Maker:** Utagawa Hiroshige I  
**Medium:** ink and color on paper



**Title:** Echigo: Oyashirazu  
**Date:** 1853, 9th month in the year of the Ox  
**Primary Maker:** Utagawa Hiroshige I  
**Medium:** woodblock print; ink and color on paper



**Title:** Sado: Gold Mines  
**Date:** 1853, 9th month in the year of the Ox  
**Primary Maker:** Utagawa Hiroshige I  
**Medium:** woodblock print



**Title:** Tanba Province:  
**Kanegasaka**  
**Date:** 1853  
**Primary Maker:** Utagawa Hiroshige I  
**Medium:** ink and color on paper



**Title:** Tango: Ama-No-Hashidate  
**Date:** 1853, 12th month in the year of the Ox  
**Primary Maker:** Utagawa Hiroshige I  
**Medium:** woodblock print



**Title:** Tajima Province:  
**the Iwai Valley, Kannon Cave**  
**Date:** 1853  
**Primary Maker:** Utagawa Hiroshige I  
**Medium:** ink and color on paper



**Title:** Inaba: Kajikoyama  
**Date:** 1853, 12th month in the year of the Ox  
**Primary Maker:** Utagawa Hiroshige I  
**Medium:** woodblock print; ink and color on paper



**Title: Hoki Province:  
Ono and Distant View of  
Mount Daisen**

**Date:** 1853

**Primary Maker:** Utagawa  
Hiroshige I

**Medium:** woodblock print; ink  
and color on paper



**Title: Izumo Province:  
The Hotohoto Festival at  
the Great Shrine (Izumo,  
Taisha, Hotohoto no zu)**

**Date:** 1853

**Primary Maker:** Utagawa  
Hiroshige I

**Medium:** woodblock print; ink  
and color on paper



**Title: Iwami Province:  
Mount Takazuno and  
Salt Beat**

**Date:** 1853

**Primary Maker:** Utagawa  
Hiroshige I

**Medium:** ink and color on  
paper



**Title: Oki Province: the  
Takuhi Shrine**

**Date:** 1853

**Primary Maker:** Utagawa  
Hiroshige I

**Medium:** woodblock print

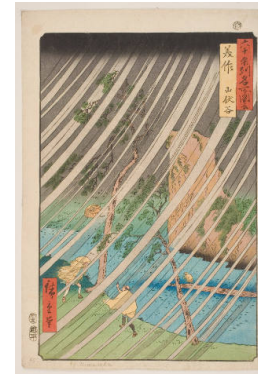


**Title: Harima Province:  
Maiko Beach**

**Date:** 1853

**Primary Maker:** Utagawa  
Hiroshige I

**Medium:** ink and color on  
paper



**Title: Mimasaka  
Province: the  
Yamabushi Valley**

**Date:** 1853

**Primary Maker:** Utagawa  
Hiroshige I

**Medium:** ink and color on  
paper

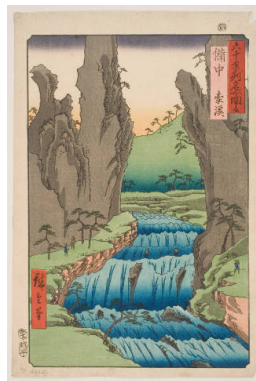


**Title: Bizen Province:  
the Tanokuchi Coast  
and Yugason Torii Gate**

**Date:** 1853

**Primary Maker:** Utagawa  
Hiroshige I

**Medium:** ink and color on  
paper

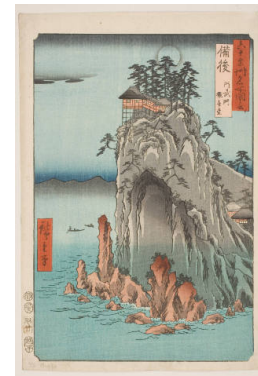


**Title: Bitchu Province:  
the Gokei Valley**

**Date:** 1853

**Primary Maker:** Utagawa  
Hiroshige I

**Medium:** ink and color on  
paper



**Title: Bingo Province:  
Abuto Kannon Hall**

**Date:** 1853

**Primary Maker:** Utagawa  
Hiroshige I

**Medium:** ink and color on  
paper

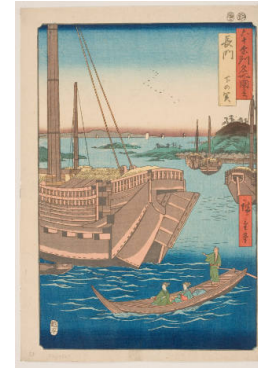




**Title:** Aki Province: A Festival at Itsukushima  
**Date:** 1853  
**Primary Maker:** Utagawa Hiroshige I  
**Medium:** ink and color on paper



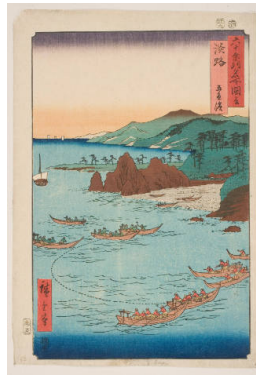
**Title:** Suo Province: the Kintai Bridge in Iwakuni  
**Date:** 1853  
**Primary Maker:** Utagawa Hiroshige I  
**Medium:** ink and color on paper



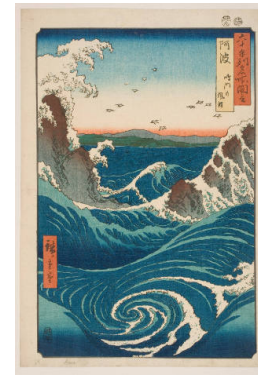
**Title:** Nagato Province: Shimonoseki  
**Date:** 1856  
**Primary Maker:** Utagawa Hiroshige I  
**Medium:** ink and color on paper



**Title:** Kii Province: Wakanoura  
**Date:** 1855  
**Primary Maker:** Utagawa Hiroshige I  
**Medium:** ink and color on paper



**Title:** Awaji: Goshiki Beach  
**Date:** 1855, 9th month in the year of the Hare  
**Primary Maker:** Utagawa Hiroshige I  
**Medium:** woodblock print; ink and color on paper



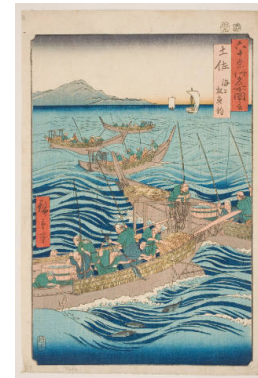
**Title:** Awa Province: Whirlpools at Naruto (Awa, Naruto no fha)  
**Date:** 1855, 9th month  
**Primary Maker:** Utagawa Hiroshige I  
**Medium:** woodblock print; ink and color on paper



**Title:** Sanuki: Distant View Of Mount Zozu  
**Date:** 1855, 9th month in the year of the Hare  
**Primary Maker:** Utagawa Hiroshige I  
**Medium:** woodblock print



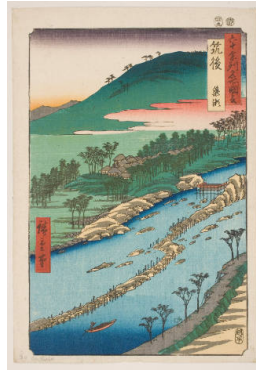
**Title:** Iyo Province: Saijo Village  
**Date:** 1855  
**Primary Maker:** Utagawa Hiroshige I  
**Medium:** ink and color on paper



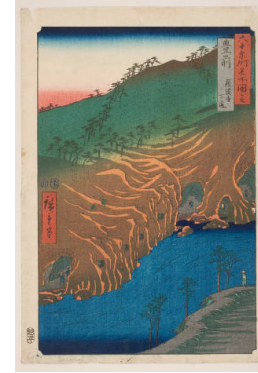
**Title:** Tosa Province: Bonito Fishing at Sea  
**Date:** 1855  
**Primary Maker:** Utagawa Hiroshige I  
**Medium:** ink and color on paper



**Title: Chikuzen: Hakozaiki - The Road in the Sea**  
**Date:** 1855, 9th month in the year of the Hare  
**Primary Maker:** Utagawa Hiroshige I  
**Medium:** woodblock print; ink and color on paper



**Title: Chikugo Province: the Weir in the Shallows**  
**Date:** 1855  
**Primary Maker:** Utagawa Hiroshige I  
**Medium:** ink and color on paper



**Title: Buzen Province: the Tunnel to the Rakan Monastery**  
**Date:** 1854  
**Primary Maker:** Utagawa Hiroshige I  
**Medium:** ink and color on paper



**Title: Bungo Province: Minosaki**  
**Date:** 1856  
**Primary Maker:** Utagawa Hiroshige I  
**Medium:** ink and color on paper



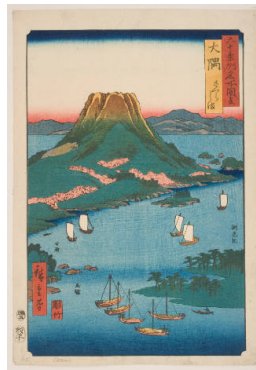
**Title: Hizen Province: Mount Inasa Nagasaki**  
**Date:** 1856  
**Primary Maker:** Utagawa Hiroshige I  
**Medium:** ink and color on paper



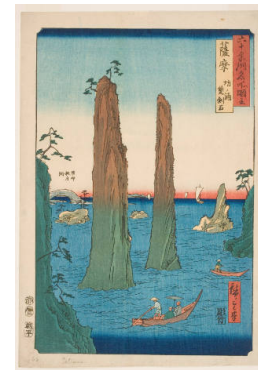
**Title: Higo Province: Gokanosho**  
**Date:** 1856  
**Primary Maker:** Utagawa Hiroshige I  
**Medium:** ink and color on paper



**Title: Hyuga Province: Abursatsu Port, Obi Oshima**  
**Date:** 1856  
**Primary Maker:** Utagawa Hiroshige I  
**Medium:** ink and color on paper



**Title: Osumi Province: Sakurashima**  
**Date:** 1856  
**Primary Maker:** Utagawa Hiroshige I  
**Medium:** ink and color on paper



**Title: Satsuma Province: The Two-Sword Rocks at Bo Bay**  
**Date:** 1856  
**Primary Maker:** Utagawa Hiroshige I  
**Medium:** ink and color on paper





**Title: Iki Province: Shisa**

**Date:** 1856

**Primary Maker:** Utagawa Hiroshige I

**Medium:** ink and color on paper



**Title: Tsushima Province: A Fine Evening on the Coast**

**Date:** 1856

**Primary Maker:** Utagawa Hiroshige I

**Medium:** ink and color on paper



**Title: Edo: The Asakusa Fair (Edo Asakusa no ichi)**

**Date:** 1853, 10th month

**Primary Maker:** Utagawa Hiroshige I

**Medium:** woodblock print; ink and color on paper

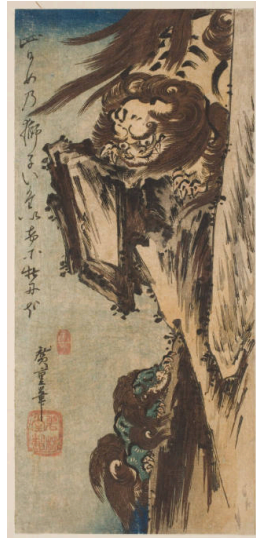


**Title: White Cranes Flying Over Breakers**

**Date:** 19th century

**Primary Maker:** Utagawa Hiroshige I

**Medium:** woodblock print



**Title: A Female Karashishi Crouching Upon a Ledge**

**Date:** about 1832

**Primary Maker:** Utagawa Hiroshige I

**Medium:** woodblock print; ink and color on paper



**Title: Plum Blossoms and Eastern Blue Magpie**

**Date:** about 1836

**Primary Maker:** Utagawa Hiroshige I

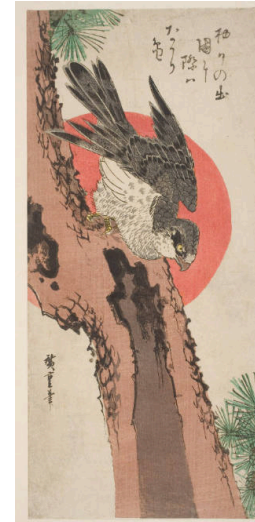
**Medium:** woodblock print



**Title:** Snow-Laden Camellias and Tree Sparrows  
**Date:** about 1832–1835 (first edition)  
**Primary Maker:** Utagawa Hiroshige I  
**Medium:** woodblock print; ink and colors on paper; o-tanzaku



**Title:** Common Kingfisher and Hydrangeas  
**Date:** about 1836  
**Primary Maker:** Utagawa Hiroshige I  
**Medium:** woodblock print; ink and color on paper; o-tanzaku



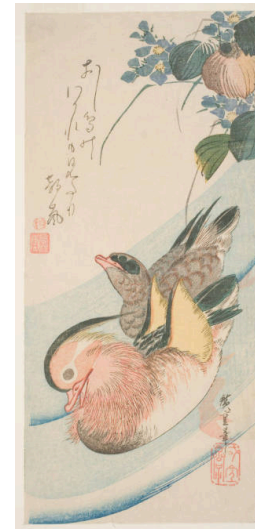
**Title:** Pine Tree, Falcon and Sun  
**Date:** about 1833  
**Primary Maker:** Utagawa Hiroshige I  
**Medium:** woodblock print



**Title:** Rooster near Umbrella and Morning Glories  
**Date:** about 1833  
**Primary Maker:** Utagawa Hiroshige I  
**Medium:** woodblock print



**Title:** Mallards Beneath Snow-Laden Reeds  
**Date:** about 1835  
**Primary Maker:** Utagawa Hiroshige I  
**Medium:** woodblock ; ink and colors on paper; o-tanzaku



**Title:** Mandarin Ducks (Oshidori)  
**Date:** about 1836  
**Primary Maker:** Utagawa Hiroshige I  
**Medium:** woodblock print, ink and color on paper; o-tanzaku





**Title:** Pink Camellia Blossoms And Oriental Bullfinch  
**Date:** about 1832  
**Primary Maker:** Utagawa Hiroshige I  
**Medium:** woodblock print



**Title:** Peony Flowers and Peacock  
**Date:** about 1832  
**Primary Maker:** Utagawa Hiroshige I  
**Medium:** multicolored woodblock print



**Title:** Kerria Japonica and Frogs  
**Date:** about 1830  
**Primary Maker:** Utagawa Hiroshige I  
**Medium:** woodblock print



**Title:** Parrot on a Flowering Branch  
**Date:** early 1830s  
**Primary Maker:** Utagawa Hiroshige I  
**Medium:** woodblock print; ink and color on paper; o-tanzaku



**Title:** Quince Blossoms and Unidentified Bird  
**Date:** about 1845  
**Primary Maker:** Utagawa Hiroshige I  
**Medium:** woodblock print



**Title:** Peach Blossoms and Swallows  
**Date:** about 1845  
**Primary Maker:** Utagawa Hiroshige I  
**Medium:** woodblock print



**Title: Pine Branch, the  
Disk of the Full Moon  
and a Cuckoo**

**Date:** about 1842

**Primary Maker:** Utagawa  
Hiroshige I

**Medium:** woodblock print

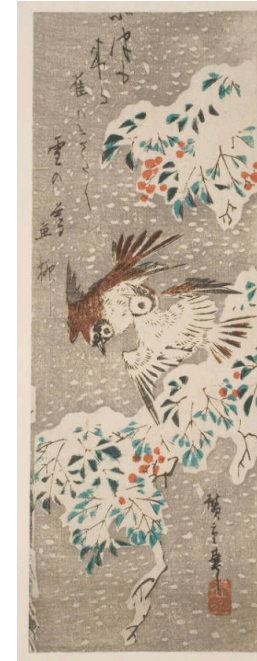


**Title: Japan Fringed  
Pinks and Butterfly**

**Date:** about 1834

**Primary Maker:** Utagawa  
Hiroshige I

**Medium:** woodblock print; ink  
and color on paper



**Title: Nantina and  
Russet Sparrows in  
Falling Snow**

**Date:** about 1838

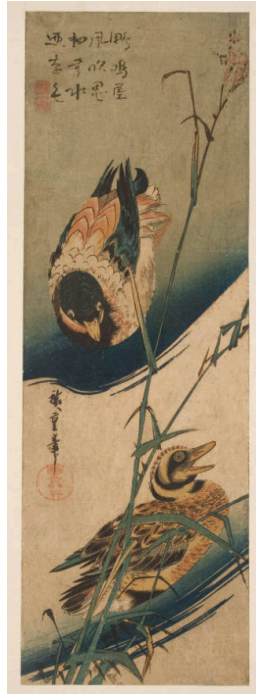
**Primary Maker:** Utagawa  
Hiroshige I

**Medium:** woodblock print





**Title:** Little Cuckoo  
Escaping from the Rain  
**Date:** early 1830s  
**Primary Maker:** Utagawa  
Hiroshige I  
**Medium:** woodblock print; ink  
and color on paper; chu-  
tanzaku



**Title:** Two Wild Ducks  
and Reeds with Ears  
**Date:** about 1833  
**Primary Maker:** Utagawa  
Hiroshige I  
**Medium:** woodblock print

**Title:** A Paddy Bird  
Perched Upon a Morning  
Glory Vine  
**Date:** about 1838  
**Primary Maker:** Utagawa  
Hiroshige I  
**Medium:** woodblock print; ink  
and color on paper

**Title:** White-Naped  
Crane and Asters (Shion  
Ni Manazuru)  
**Date:** early 1830s  
**Primary Maker:** Utagawa  
Hiroshige I  
**Medium:** woodblock print; ink  
and color on paper; chu-  
tanzaku



**Title:** Two Pairs of  
Mandarin Ducks  
**Date:** about 1840  
**Primary Maker:** Utagawa  
Hiroshige I  
**Medium:** woodblock print



**Title:** Two Little Egrets  
Amidst Reeds and Blue-  
Flag Irises (Hanashobu  
ni kosagi)  
**Date:** early 1830s  
**Primary Maker:** Utagawa  
Hiroshige I  
**Medium:** woodblock print; ink  
and color on paper; chuban  
tate-e



**Title: Roses and Bird**

**Date:** 19th century

**Primary Maker:** Utagawa Hiroshige I

**Medium:** woodblock print

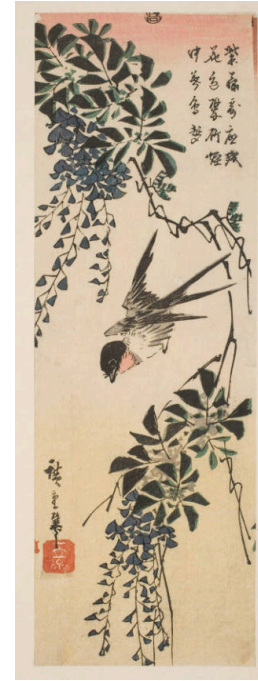


**Title: Two Russet Sparrows and a Camellia Branch with One Flower**

**Date:** about 1840

**Primary Maker:** Utagawa Hiroshige I

**Medium:** woodblock print



**Title: Wisteria Flowers and Swallow**

**Date:** about 1840

**Primary Maker:** Utagawa Hiroshige I

**Medium:** woodblock print





**Title: Wisteria Flowers and Swallow**

**Date:** about 1840

**Primary Maker:** Utagawa Hiroshige I

**Medium:** woodblock print



**Title: White Heron and Irises**

**Date:** about 1833

**Primary Maker:** Utagawa Hiroshige I

**Medium:** woodblock print; ink and color on paper



**Title: A Paddy Bird - Java Bird - Perched Upon a Young Bamboo Shoot**

**Date:** about 1840

**Primary Maker:** Utagawa Hiroshige I

**Medium:** woodblock print; ink and color on paper



**Title: New Year House Decorations**

**Date:** about 1840

**Primary Maker:** Utagawa Hiroshige I

**Medium:** woodblock print



**Title: Tall Plumes of Suzuki Grass**

**Date:** about 1840

**Primary Maker:** Utagawa Hiroshige I

**Medium:** woodblock print



**Title: Two Butterflies**

**Date:** about 1840

**Primary Maker:** Utagawa Hiroshige I

**Medium:** woodblock print





**Title:** Landscape  
**Date:** about 1840  
**Primary Maker:** Utagawa Hiroshige I  
**Medium:** woodblock print



**Title:** Two Mackerel (?) and a Small Tree Branch  
**Date:** about 1840  
**Primary Maker:** Utagawa Hiroshige I  
**Medium:** woodblock print



**Title:** Two Swallows Flying About Amid Falling Petals  
**Date:** about 1840  
**Primary Maker:** Utagawa Hiroshige I  
**Medium:** woodblock print



**Title:** Things for Making a Fire to Heat Water in a Tea Room  
**Date:** about 1840  
**Primary Maker:** Utagawa Hiroshige I  
**Medium:** woodblock print



**Title:** Lobsters and Seaweed  
**Date:** about 1840  
**Primary Maker:** Utagawa Hiroshige I  
**Medium:** woodblock print



**Title:** A Peony Branch with One Large Flower Fully Opened  
**Date:** about 1840  
**Primary Maker:** Utagawa Hiroshige I  
**Medium:** ink and color on paper



**Title: A Small Sansui**

**Date:** 19th century

**Primary Maker:** Utagawa Hiroshige I

**Medium:** woodblock print; ink and color on paper



**Title: Fortune Telling According to the Seimei School**

**Date:** about 1848

**Primary Maker:** Utagawa Hiroshige I

**Medium:** woodblock print; ink and color on paper



**Title: Ueno: Picture of Toeizan Buddhist Temple**

**Date:** about 1840

**Primary Maker:** Utagawa Hiroshige I

**Medium:** woodblock print



**Title: Asakusa: Picture of Kinryuzan Buddhist Temple**

**Date:** about 1840

**Primary Maker:** Utagawa Hiroshige I

**Medium:** woodblock print; ink and color on paper



**Title: Narumi Post Station**

**Date:** about 1838

**Primary Maker:** Utagawa Hiroshige I

**Medium:** woodblock print



**Title: Sunrise at Shibaura on the Shore of Edo Bay**

**Date:** 3rd month rat year, 1852

**Primary Maker:** Utagawa Hiroshige I

**Medium:** woodblock print





**Title: Fuyu Sumidagawa no Yuki**

**Date:** about 1836

**Primary Maker:** Utagawa Hiroshige I

**Medium:** woodblock print; ink and color on paper



**Title: The Autumn Moon at Ishiyama**

**Date:** about 1835

**Primary Maker:** Utagawa Hiroshige I

**Medium:** woodblock print



**Title: Lingering Snow on Mount Hira**

**Date:** about 1835

**Primary Maker:** Utagawa Hiroshige I

**Medium:** woodblock print



**Title: The Evening Glow at Seta**

**Date:** about 1835

**Primary Maker:** Utagawa Hiroshige I

**Medium:** woodblock print



**Title: The Evening Bell at Mii-Dera**

**Date:** about 1835

**Primary Maker:** Utagawa Hiroshige I

**Medium:** woodblock print



**Title: Yabase No Kihan**

**Date:** about 1835

**Primary Maker:** Utagawa Hiroshige I

**Medium:** woodblock print



**Title: The Sunset Sky at Awazu**

**Date:** about 1835

**Primary Maker:** Utagawa Hiroshige I

**Medium:** woodblock print



**Title: Wild Geese Flying Down at Katata**

**Date:** about 1835

**Primary Maker:** Utagawa Hiroshige I

**Medium:** woodblock print



**Title: Night Rain at Karasaki**

**Date:** about 1835

**Primary Maker:** Utagawa Hiroshige I

**Medium:** woodblock print



**Title: Scene From Act I**

**Date:** about 1840

**Primary Maker:** Utagawa Hiroshige I

**Medium:** woodblock print



**Title: Scene From Act Ii**

**Date:** about 1840

**Primary Maker:** Utagawa Hiroshige I

**Medium:** woodblock print



**Title: Scene From Act Iii**

**Date:** about 1840

**Primary Maker:** Utagawa Hiroshige I

**Medium:** woodblock print



**Title: Scene From Act IV**

**Date:** about 1840

**Primary Maker:** Utagawa Hiroshige I

**Medium:** woodblock print



**Title: Scene From Act V**

**Date:** about 1840

**Primary Maker:** Utagawa Hiroshige I

**Medium:** woodblock print



**Title: Scene From Act V**

**Date:** about 1840

**Primary Maker:** Utagawa Hiroshige I

**Medium:** woodblock print





**Title: Scene From Act VI**

**Date:** about 1840

**Primary Maker:** Utagawa  
Hiroshige I

**Medium:** woodblock print



**Title: Scene From Act VII**

**Date:** about 1840

**Primary Maker:** Utagawa  
Hiroshige I

**Medium:** woodblock print



**Title: Scene From Act VIII**

**Date:** about 1840

**Primary Maker:** Utagawa  
Hiroshige I

**Medium:** woodblock print



**Title: Scene From Act IX**

**Date:** about 1840

**Primary Maker:** Utagawa  
Hiroshige I

**Medium:** woodblock print



**Title: Scene From Act X**

**Date:** about 1840

**Primary Maker:** Utagawa  
Hiroshige I

**Medium:** woodblock print



**Title: Scene I From Act Xi**

**Date:** about 1840

**Primary Maker:** Utagawa  
Hiroshige I

**Medium:** woodblock print



**Title: The Night Attack ( Second Scene ) : The Raid**

**Date:** about 1836–1838

**Primary Maker:** Utagawa  
Hiroshige I

**Medium:** woodblock print, ink  
and color on paper, horizontal  
oban



**Title: The Night Attack (Third Scene): The Longcherished Capture**

**Date:** about 1836–1838

**Primary Maker:** Utagawa  
Hiroshige I

**Medium:** woodblock print; ink  
and color on paper; horizontal  
oban



**Title: Act XI, Scene IV**

**Date:** about 1840

**Primary Maker:** Utagawa  
Hiroshige I

**Medium:** woodblock print; ink  
and color on paper



**Title: Scene V From Act XI**

**Date:** about 1840

**Primary Maker:** Utagawa Hiroshige I

**Medium:** woodblock print



**Title: Act XI, Scene 6,  
The Ronin Marching to  
the Temple Sangaku-ji**

**Date:** about 1836–1838

**Primary Maker:** Utagawa Hiroshige I

**Medium:** woodblock print; ink and color on paper; horizontal oban.



**Title: Ichikoku Bridge in  
the Eastern Capital (Tto  
Ichikokubashi)**

**Date:** 1858

**Primary Maker:** Utagawa Hiroshige I

**Medium:** woodblock print; ink and color on paper



**Title: The Suruga  
District in the Eastern  
Capital (Tto Surugach)**

**Date:** 1858

**Primary Maker:** Utagawa Hiroshige I

**Medium:** woodblock print; ink and color on paper

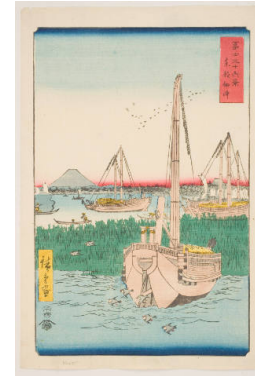


**Title: The Riverbank at  
Sukiya in the Eastern  
Capital (Tto Sukiagashi)**

**Date:** 1858

**Primary Maker:** Utagawa Hiroshige I

**Medium:** woodblock print; ink and color on paper



**Title: The Sea at  
Tsukuda in the Eastern  
Capital (Tto Tsukuda oki)**

**Date:** 1858

**Primary Maker:** Utagawa Hiroshige I

**Medium:** woodblock print; ink and color on paper



**Title: Ochanomizu in the  
Eastern Capital (Tto  
Ochanomizu)**

**Date:** 1858

**Primary Maker:** Utagawa Hiroshige I

**Medium:** woodblock print; ink and color on paper



**Title: Ryugoku in the  
Eastern Capital (Tto  
Ryugoku)**

**Date:** 1858, 4th month

**Primary Maker:** Utagawa Hiroshige I

**Medium:** woodblock print; ink and color on paper



**Title: The Sumida River  
Embankment in the  
Eastern Capital (Tto  
Sumidazutsumi)**

**Date:** 1858

**Primary Maker:** Utagawa Hiroshige I

**Medium:** woodblock print; ink and color on paper

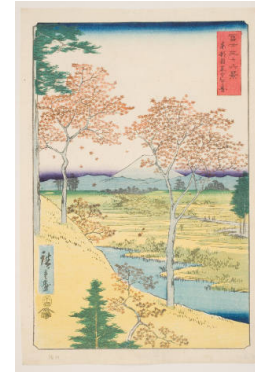




**Title:** Asuka Hill in the Eastern Capital (Tto Asukayama)  
**Date:** 1858  
**Primary Maker:** Utagawa Hiroshige I  
**Medium:** woodblock print; ink and color on paper



**Title:** Fuji-View Teahouse at Zshigaya (Zshigaya Fujimi chaya)  
**Date:** 1858  
**Primary Maker:** Utagawa Hiroshige I  
**Medium:** woodblock print; ink and color on paper



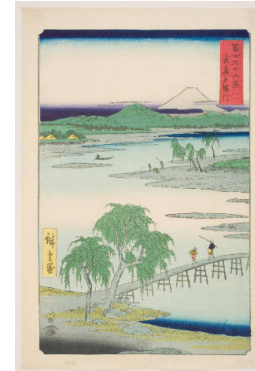
**Title:** Yhigaoka at Meguro in the Eastern Capital (Tto Meguro Yhigaoka)  
**Date:** 1858  
**Primary Maker:** Utagawa Hiroshige I  
**Medium:** woodblock print; ink and color on paper



**Title:** The Tone River at Knodai (Knodai Tonegawa)  
**Date:** 1858  
**Primary Maker:** Utagawa Hiroshige I  
**Medium:** woodblock print; ink and color on paper



**Title:** Koganei in Musashi Province (Musashi Koganei)  
**Date:** 1858  
**Primary Maker:** Utagawa Hiroshige I  
**Medium:** woodblock print; ink and color on paper



**Title:** Jewel River in Musashi Province (Musashi Tamagawa)  
**Date:** 1858, 4th month  
**Primary Maker:** Utagawa Hiroshige I  
**Medium:** woodblock print; ink and color on paper



**Title:** The Outskirts of Koshigaya in Musashi Province (Musashi Koshigaya zai)  
**Date:** 1858  
**Primary Maker:** Utagawa Hiroshige I  
**Medium:** woodblock print; ink and color on paper



**Title:** Yokohama at Noge in Musashi Province (Musashi Noge Yokohama)  
**Date:** 1858  
**Primary Maker:** Utagawa Hiroshige I  
**Medium:** woodblock print; ink and color on paper



**Title:** Honmoku Point in Musashi Province (Musashi Honmoku no hana)  
**Date:** 1858  
**Primary Maker:** Utagawa Hiroshige I  
**Medium:** woodblock print; ink and color on paper

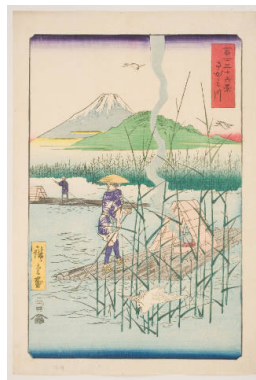


**Title: The Sea at Miura in Sagami Province (Ssh Miura no kaij)**

**Date:** 1858

**Primary Maker:** Utagawa Hiroshige I

**Medium:** woodblock print; ink and color on paper

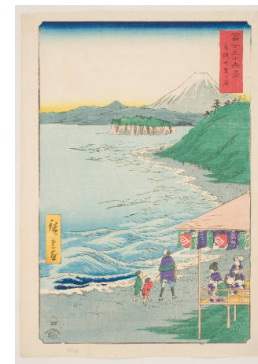


**Title: The Sagami River (Sagamigawa)**

**Date:** 1858

**Primary Maker:** Utagawa Hiroshige I

**Medium:** woodblock print; ink and color on paper

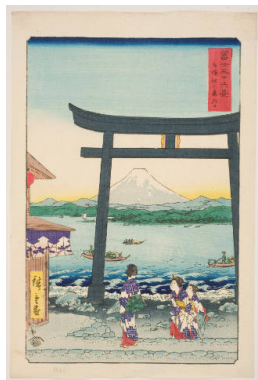


**Title: Seven-Mile Beach in Sagami Province (Ssh: Shichiri-ga-hama)**

**Date:** 1858

**Primary Maker:** Utagawa Hiroshige I

**Medium:** woodblock print; ink and color on paper

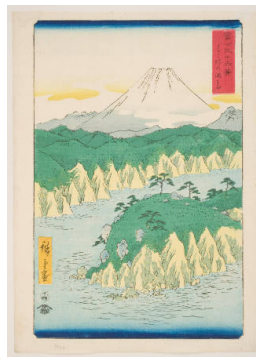


**Title: Entrance Gate to Enoshima in Sagami Province (Sagami Enoshima iriguchi)**

**Date:** 1858, 4th month

**Primary Maker:** Utagawa Hiroshige I

**Medium:** woodblock print; ink and color on paper

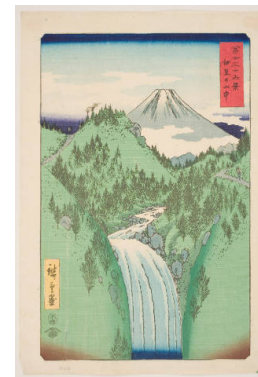


**Title: The Lake at Hakone (Hakone no kosui)**

**Date:** 1858

**Primary Maker:** Utagawa Hiroshige I

**Medium:** woodblock print; ink and color on paper



**Title: In the Mountains of Izu Province (Izu no sanchi)**

**Date:** 1858

**Primary Maker:** Utagawa Hiroshige I

**Medium:** woodblock print; ink and color on paper



**Title: The Sea off Satta in Suruga Province (Suruga Satta no kaij)**

**Date:** 1858

**Primary Maker:** Utagawa Hiroshige I

**Medium:** woodblock print; ink and color on paper

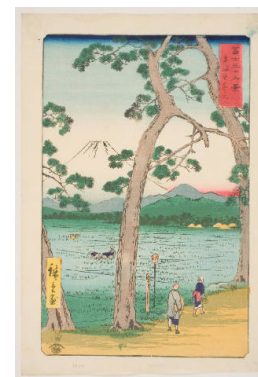


**Title: Pine Beach at Miho in Suruga Province (Suruga Miho no matsubara)**

**Date:** 1858

**Primary Maker:** Utagawa Hiroshige I

**Medium:** woodblock print; ink and color on paper



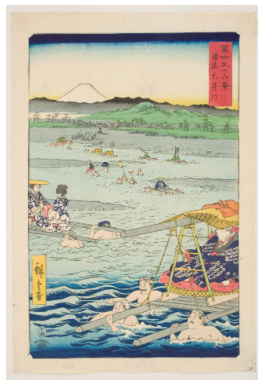
**Title: Fuji Seen from the Left on the Tkaid (Tkaid hidari Fuji)**

**Date:** 1858

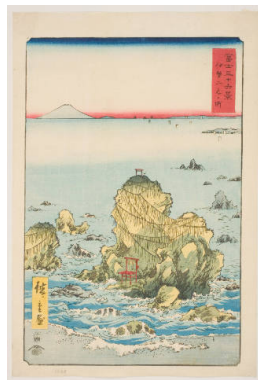
**Primary Maker:** Utagawa Hiroshige I

**Medium:** woodblock print; ink and color on paper

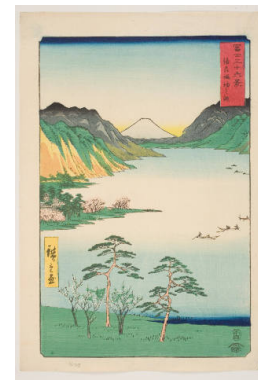




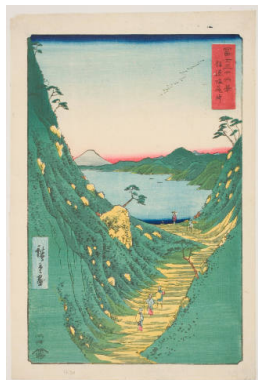
**Title:** The i River between Suruga and Ttmi Provinces (Sun En igawa)  
**Date:** 1858  
**Primary Maker:** Utagawa Hiroshige I  
**Medium:** woodblock print; ink and color on paper



**Title:** Futamigaura in Ise Province (Ise Futamigaura)  
**Date:** 1858  
**Primary Maker:** Utagawa Hiroshige I  
**Medium:** woodblock print; ink and color on paper



**Title:** Lake Suwa in Shinano Province (Shinsh Suwa no mizuumi)  
**Date:** 1858  
**Primary Maker:** Utagawa Hiroshige I  
**Medium:** woodblock print; ink and color on paper



**Title:** Shiojiri Pass in Shinano Province (Shinano Shiojiri tge)  
**Date:** 1858  
**Primary Maker:** Utagawa Hiroshige I  
**Medium:** woodblock print; ink and color on paper



**Title:** Misaka Pass in Kai Province (Kai Misaka-goe)  
**Date:** 1858, 4th month  
**Primary Maker:** Utagawa Hiroshige I  
**Medium:** woodblock print; ink and color on paper



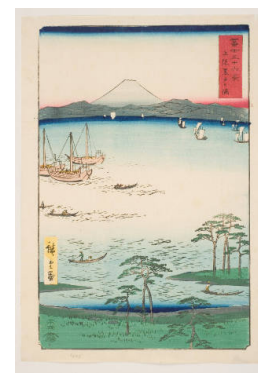
**Title:** tsuki Plain in Kai Province (Kai tsuki no hara)  
**Date:** 1858  
**Primary Maker:** Utagawa Hiroshige I  
**Medium:** woodblock print; ink and color on paper



**Title:** Inume Pass in Kai Province (Kai Inume tge)  
**Date:** 1858  
**Primary Maker:** Utagawa Hiroshige I  
**Medium:** woodblock print; ink and color on paper



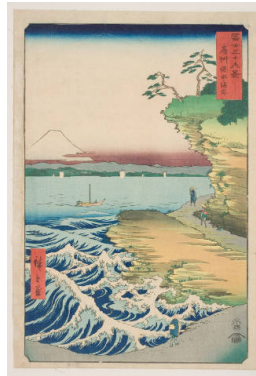
**Title:** Kogane Plain in Shimsa Province (Shimsa Koganehara)  
**Date:** 1858  
**Primary Maker:** Utagawa Hiroshige I  
**Medium:** woodblock print; ink and color on paper



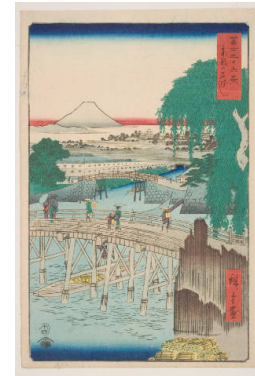
**Title:** Kurodo Bay in Kazusa Province (Kazusa Kurodo no ura)  
**Date:** 1858  
**Primary Maker:** Utagawa Hiroshige I  
**Medium:** woodblock print; ink and color on paper



**Title:** Rokusozan in Kazusa Province (Kazusa Rokusozan)  
**Date:** 1858  
**Primary Maker:** Utagawa Hiroshige I  
**Medium:** woodblock print; ink and color on paper



**Title:** Seashore at Hota in Awa Province (Bsh Hota no kaigan)  
**Date:** 1858  
**Primary Maker:** Utagawa Hiroshige I  
**Medium:** woodblock print; ink and color on paper



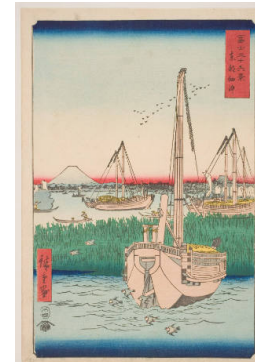
**Title:** Ichikoku Bridge in the Eastern Capital (Tto Ichikokubashi)  
**Date:** 1858  
**Primary Maker:** Utagawa Hiroshige I  
**Medium:** woodblock print; ink and color on paper



**Title:** The Suruga District in the Eastern Capital (Tto Surugach)  
**Date:** 1858  
**Primary Maker:** Utagawa Hiroshige I  
**Medium:** woodblock print; ink and color on paper



**Title:** The Riverbank at Sukiya in the Eastern Capital (Tto Sukiyagashi)  
**Date:** 1858  
**Primary Maker:** Utagawa Hiroshige I  
**Medium:** woodblock print; ink and color on paper



**Title:** The Sea at Tsukuda in the Eastern Capital (Tto Tsukuda oki)  
**Date:** 1858  
**Primary Maker:** Utagawa Hiroshige I  
**Medium:** woodblock print; ink and color on paper



**Title:** Ochanomizu in the Eastern Capital (Tto Ochanomizu)  
**Date:** 1858  
**Primary Maker:** Utagawa Hiroshige I  
**Medium:** woodblock print; ink and color on paper



**Title:** Ryugoku in the Eastern Capital (Tto Ryugoku)  
**Date:** 1858  
**Primary Maker:** Utagawa Hiroshige I  
**Medium:** woodblock print; ink and color on paper



**Title:** The Sumida River Embankment in the Eastern Capital (Tto Sumidazutsumi)  
**Date:** 1858  
**Primary Maker:** Utagawa Hiroshige I  
**Medium:** woodblock print; ink and color on paper

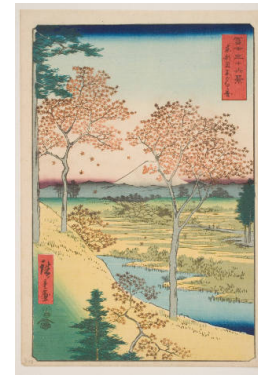




**Title:** Asuka Hill in the Eastern Capital (Tto Asukayama)  
**Date:** 1858  
**Primary Maker:** Utagawa Hiroshige I  
**Medium:** woodblock print; ink and color on paper



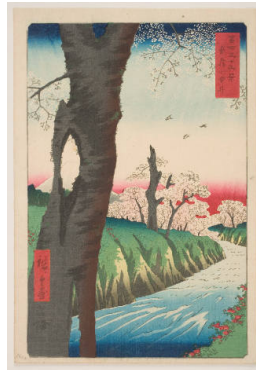
**Title:** Fuji-View Teahouse at Zshigaya (Zshigaya Fujimi chaya)  
**Date:** 1858  
**Primary Maker:** Utagawa Hiroshige I  
**Medium:** woodblock print; ink and color on paper



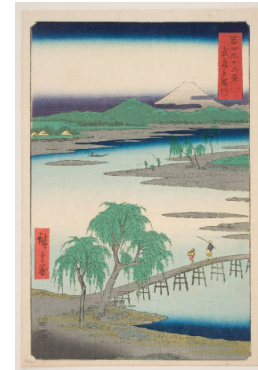
**Title:** Yhigaoka at Meguro in the Eastern Capital (Tto Meguro Yhigaoka)  
**Date:** 1858  
**Primary Maker:** Utagawa Hiroshige I  
**Medium:** woodblock print; ink and color on paper



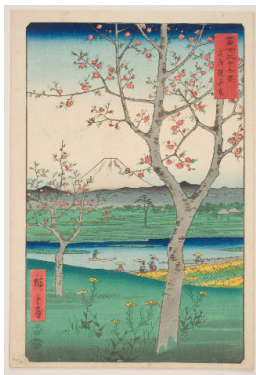
**Title:** The Tone River at Knodai (Knodai Tonegawa)  
**Date:** 1858  
**Primary Maker:** Utagawa Hiroshige I  
**Medium:** woodblock print; ink and color on paper



**Title:** Koganei in Musashi Province (Musashi Koganei)  
**Date:** 1858, 4th month  
**Primary Maker:** Utagawa Hiroshige I  
**Medium:** woodblock print; ink and color on paper



**Title:** The Jewel River in Musashi Province (Musashi Tamagawa)  
**Date:** 1858  
**Primary Maker:** Utagawa Hiroshige I  
**Medium:** woodblock print; ink and color on paper



**Title:** The Outskirts of Koshigaya in Musashi Province (Musashi Koshigaya zai)  
**Date:** 1858  
**Primary Maker:** Utagawa Hiroshige I  
**Medium:** woodblock print; ink and color on paper



**Title:** Fuji Seen from the Sea off Noge Yokohama in Musashi Province  
**Date:** 4th month horse year Ansei 5, 1858  
**Primary Maker:** Utagawa Hiroshige I  
**Medium:** woodblock print; ink and color on paper



**Title:** Honmoku Point in Musashi Province (Musashi Honmoku no hana)  
**Date:** 1858  
**Primary Maker:** Utagawa Hiroshige I  
**Medium:** woodblock print; ink and color on paper

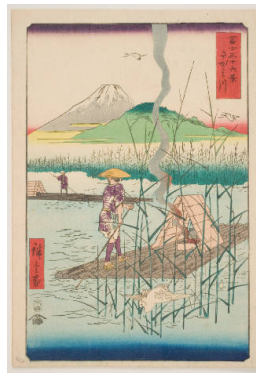


**Title: The Sea at Miura in Sagami Province (Ssh Miura no kaij)**

**Date:** 1858

**Primary Maker:** Utagawa Hiroshige I

**Medium:** woodblock print; ink and color on paper



**Title: The Sagami River (Sagamigawa)**

**Date:** 1858

**Primary Maker:** Utagawa Hiroshige I

**Medium:** woodblock print; ink and color on paper



**Title: Seven-Mile Beach in Sagami Province (Sagami Shichirigahama)**

**Date:** 1858

**Primary Maker:** Utagawa Hiroshige I

**Medium:** woodblock print; ink and color on paper



**Title: Entrance Gate to Enoshima in Sagami Province (Sagami Enoshima iriguchi)**

**Date:** 1858

**Primary Maker:** Utagawa Hiroshige I

**Medium:** woodblock print; ink and color on paper

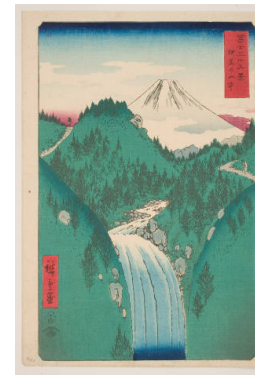


**Title: The Lake at Hakone (Hakone no kosui)**

**Date:** 1858

**Primary Maker:** Utagawa Hiroshige I

**Medium:** woodblock print; ink and color on paper



**Title: In the Mountains of Izu Province (Izu no sanch)**

**Date:** 1858

**Primary Maker:** Utagawa Hiroshige I

**Medium:** woodblock print; ink and color on paper

**Title: The Sea off Satta in Suruga Province (Suruga Satta no kaij)**

**Date:** 1858

**Primary Maker:** Utagawa Hiroshige I

**Medium:** woodblock print; ink and color on paper

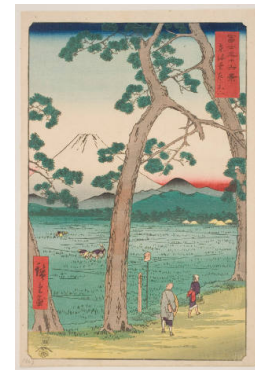


**Title: Pine Beach at Miho in Suruga Province (Suruga Miho no matsubara)**

**Date:** 1858

**Primary Maker:** Utagawa Hiroshige I

**Medium:** woodblock print; ink and color on paper



**Title: Fuji Seen from the Left on the Tkaid (Tkaid hidari Fuji)**

**Date:** 1858

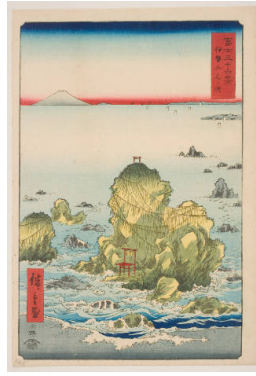
**Primary Maker:** Utagawa Hiroshige I

**Medium:** woodblock print; ink and color on paper

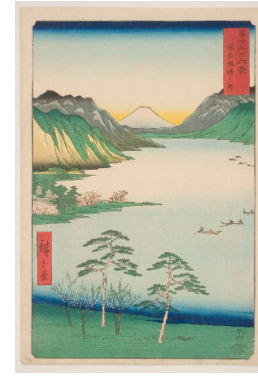




**Title:** The i River between Suruga and Ttmi Provinces (Sun En igawa)  
**Date:** 1858  
**Primary Maker:** Utagawa Hiroshige I  
**Medium:** woodblock print; ink and color on paper



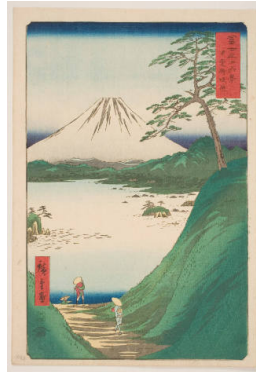
**Title:** Futamigaura in Ise Province (Ise Futamigaura)  
**Date:** 1858  
**Primary Maker:** Utagawa Hiroshige I  
**Medium:** woodblock print; ink and color on paper



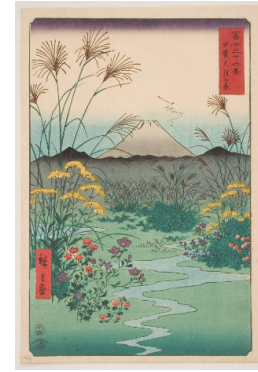
**Title:** Lake Suwa in Shinano Province (Shinsh Suwa no mizuumi)  
**Date:** 1858  
**Primary Maker:** Utagawa Hiroshige I  
**Medium:** woodblock print; ink and color on paper



**Title:** Shiojiri Pass in Shinano Province (Shinano Shiojiri tge)  
**Date:** 1858  
**Primary Maker:** Utagawa Hiroshige I  
**Medium:** woodblock print; ink and color on paper



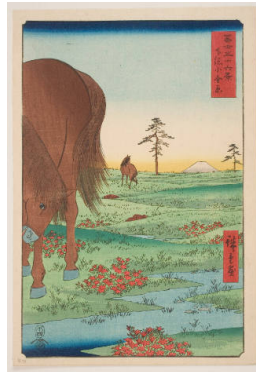
**Title:** Misaka Pass in Kai Province (Kai Misaka-goe)  
**Date:** 1858  
**Primary Maker:** Utagawa Hiroshige I  
**Medium:** woodblock print; ink and color on paper



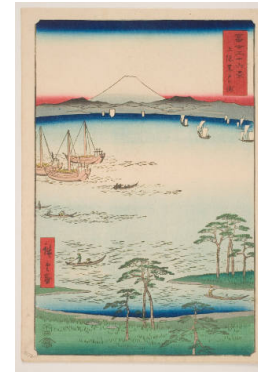
**Title:** tsuki Plain in Kai Province (Kai tsuki no hara)  
**Date:** 1858  
**Primary Maker:** Utagawa Hiroshige I  
**Medium:** woodblock print; ink and color on paper



**Title:** Inume Pass in Kai Province (Kai Inume tge)  
**Date:** 1858  
**Primary Maker:** Utagawa Hiroshige I  
**Medium:** woodblock print; ink and color on paper



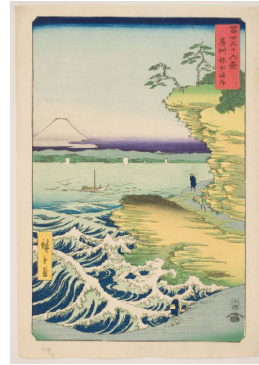
**Title:** Kogane Plain in Shimsa Province (Shimsa Koganehara)  
**Date:** 1858  
**Primary Maker:** Utagawa Hiroshige I  
**Medium:** woodblock print; ink and color on paper



**Title:** Kurodo Bay in Kazusa Province (Kazusa Kurodo no ura)  
**Date:** 1858  
**Primary Maker:** Utagawa Hiroshige I  
**Medium:** woodblock print; ink and color on paper



**Title:** Rokusozan in Kazusa Province (Kazusa Rokusozan)  
**Date:** 1858  
**Primary Maker:** Utagawa Hiroshige I  
**Medium:** woodblock print; ink and color on paper



**Title:** Seashore at Hota in Awa Province (Bsh Hota no kaigan)  
**Date:** 1858, 4th month  
**Primary Maker:** Utagawa Hiroshige I  
**Medium:** woodblock print; ink and color on paper



**Title:** The Toi no Tama River in Settsu Province  
**Date:** about 1837  
**Primary Maker:** Utagawa Hiroshige I  
**Medium:** woodblock print



**Title:** The Ide No Tamagawa in Yamashiro Province  
**Date:** about 1837  
**Primary Maker:** Utagawa Hiroshige I  
**Medium:** woodblock print



**Title:** The Noji No Tamagawa in Omi Province  
**Date:** about 1837  
**Primary Maker:** Utagawa Hiroshige I  
**Medium:** woodblock print



**Title:** The Koya No Tamagawa in Kishu  
**Date:** about 1837  
**Primary Maker:** Utagawa Hiroshige I  
**Medium:** woodblock print



**Title:** The Toi No Tamagawa in Settsu Province  
**Date:** 11th mont snake year, Ansei 4, 1857  
**Primary Maker:** Utagawa Hiroshige I  
**Medium:** woodblock print



**Title:** The Toi No Tamagawa in Settsu Province  
**Date:** 11th month snake year, Ansei 4, 1857  
**Primary Maker:** Utagawa Hiroshige I  
**Medium:** woodblock print



**Title:** The Ide No Tamagawa in Yamashiro Province  
**Date:** 11th month snake year, Ansei 4, 1857  
**Primary Maker:** Utagawa Hiroshige I  
**Medium:** woodblock print





**Title: The Ide No Tamagawa in Yamashiro Province**

**Date:** 11th month snake year, Ansei 4, 1857

**Primary Maker:** Utagawa Hiroshige I

**Medium:** woodblock print



**Title: The Noji No Tamagawa in Omi Province**

**Date:** 11th month snake year, Ansei 4, 1857

**Primary Maker:** Utagawa Hiroshige I

**Medium:** woodblock print



**Title: The Scene of Kanazawa in Bushu in Musashi Province**

**Date:** about 1837

**Primary Maker:** Utagawa Hiroshige I

**Medium:** woodblock print



**Title: The Barrier at Kiyomi in Sunshu in Suruga Province**

**Date:** about 1837

**Primary Maker:** Utagawa Hiroshige I

**Medium:** woodblock print



**Title: A View of Tempozan, the Harbor of Osaka**

**Date:** about 1837

**Primary Maker:** Utagawa Hiroshige I

**Medium:** woodblock print; ink and color on paper



**Title: The Moon Reflected in many Paddy-Fields at Sarashina in Shinshu**

**Date:** about 1840

**Primary Maker:** Utagawa Hiroshige I

**Medium:** woodblock print



**Title: Red Maple at Tsuten Bridge**

**Date:** about 1833

**Primary Maker:** Utagawa Hiroshige I

**Medium:** woodblock print



**Title: Red Maple at Tsuten Bridge**

**Date:** about 1833

**Primary Maker:** Utagawa Hiroshige I

**Medium:** woodblock print



**Title: The Willow Tree at the Exit from the Shimabara, Kyoto**

**Date:** about 1834

**Primary Maker:** Utagawa Hiroshige I

**Medium:** Multicolored woodblock print



**Title: The Gion Shinto Shrine in Falling Snow**

**Date:** about 1833

**Primary Maker:** Utagawa Hiroshige I

**Medium:** woodblock print



**Title: The Night Boat Being Poled along the Yodo River**

**Date:** about 1833

**Primary Maker:** Utagawa Hiroshige I

**Medium:** woodblock print



**Title: The Golden Pavilion**

**Date:** about 1833

**Primary Maker:** Utagawa Hiroshige I

**Medium:** woodblock print



**Title: Cherry Trees in Bloom on the Mountain Side at the Foot of the Yoshino Rapids**

**Date:** about 1833

**Primary Maker:** Utagawa Hiroshige I

**Medium:** woodblock print; ink and color on paper



**Title: The Village of Yase, a Suburb of Kyoto**

**Date:** about 1833

**Primary Maker:** Utagawa Hiroshige I

**Medium:** woodblock print



**Title: The Kiyomizu Buddhist Temple**

**Date:** about 1833

**Primary Maker:** Utagawa Hiroshige I

**Medium:** woodblock print



**Title: The Kiyomizu Buddhist Temple**

**Date:** about 1833

**Primary Maker:** Utagawa Hiroshige I

**Medium:** woodblock print



**Title: The Precinct of the Shimnei Shinto Shrine in the Shaba District of Edo**

**Date:** about 1835

**Primary Maker:** Utagawa Hiroshige I

**Medium:** woodblock print



**Title: The Benkei Moat Outside the Sakurada Gate to the Precinct of the Shogun's Palace**

**Date:** Intercalary 7th month tiger year, 1854

**Primary Maker:** Utagawa Hiroshige I

**Medium:** woodblock print





**Title:** Shiba: Zoioji Buddhist Temple  
**Date:** 1854  
**Primary Maker:** Utagawa Hiroshige I  
**Medium:** woodblock print



**Title:** Low Tide at Susaki on the Shore of Edo Bay  
**Date:** about 1835  
**Primary Maker:** Utagawa Hiroshige I  
**Medium:** woodblock print



**Title:** Asakusa: Kinryuzan Buddhist Temple  
**Date:** Intercalary 7th month tiger year, 1854  
**Primary Maker:** Utagawa Hiroshige I  
**Medium:** woodblock print; ink and color on paper



**Title:** The Evening Glow at Nojima  
**Date:** about 1841  
**Primary Maker:** Utagawa Hiroshige I  
**Medium:** woodblock print



**Title:** Returning Sailboats at Otomo  
**Date:** about 1841  
**Primary Maker:** Utagawa Hiroshige I  
**Medium:** woodblock print



**Title:** The Autumn Moon at Seto  
**Date:** about 1841  
**Primary Maker:** Utagawa Hiroshige I  
**Medium:** woodblock print



**Title:** The Evening Bell at Shomyo  
**Date:** about 1841  
**Primary Maker:** Utagawa Hiroshige I  
**Medium:** woodblock print



**Title:** The Bright Sky with a Mountain Breeze at Susaki  
**Date:** about 1841  
**Primary Maker:** Utagawa Hiroshige I  
**Medium:** woodblock print



**Title:** Wild Geese Flying Down at Hirakata  
**Date:** about 1841  
**Primary Maker:** Utagawa Hiroshige I  
**Medium:** woodblock print



**Title: Night Rain at Koidzumi**

**Date:** about 1841

**Primary Maker:** Utagawa Hiroshige I

**Medium:** woodblock print



**Title: Lingering Snow at Uchikawa**

**Date:** about 1841

**Primary Maker:** Utagawa Hiroshige I

**Medium:** woodblock print



**Title: Abalone, Halfbeak, and Peach Blossoms**

**Date:** 1830s

**Primary Maker:** Utagawa Hiroshige I

**Medium:** woodblock print; ink and color on paper



**Title: Sea Bream and Sansh Pepper**

**Date:** 1830s

**Primary Maker:** Utagawa Hiroshige I

**Medium:** woodblock print; ink and color on paper



**Title: Spiny Lobster and Shrimp**

**Date:** 1830s

**Primary Maker:** Utagawa Hiroshige I

**Medium:** woodblock print; ink and color on paper



**Title: Horse Mackerel, Prawns, and Smartweed**

**Date:** 1830s

**Primary Maker:** Utagawa Hiroshige I

**Medium:** woodblock print; ink and color on paper



**Title: Scorpionfish, Threeline Grunt, and Ginger**

**Date:** 1830s

**Primary Maker:** Utagawa Hiroshige I

**Medium:** woodblock print; ink and color on paper



**Title: Gurnards, Flatfish, and Bamboo Grass**

**Date:** 1830s

**Primary Maker:** Utagawa Hiroshige I

**Medium:** woodblock print; ink and color on paper



**Title: Gurnards, Flatfish, and Bamboo Grass**

**Date:** 1830s

**Primary Maker:** Utagawa Hiroshige I

**Medium:** woodblock print; ink and color on paper





**Title: Gurnards, Flatfish, and Bamboo Grass**

**Date:** 1830s

**Primary Maker:** Utagawa Hiroshige I

**Medium:** woodblock print; ink and color on paper



**Title: Red Tilefish, Rockfish, and Horseradish**

**Date:** 1830s–1840s

**Primary Maker:** Utagawa Hiroshige I

**Medium:** woodblock print; ink and color on paper



**Title: Yellowtail, Blowfish, and Plum Branch**

**Date:** 1840s

**Primary Maker:** Utagawa Hiroshige I

**Medium:** woodblock print; ink and color on paper



**Title: Striped Sea Bream, Fat Greenling, and Nandina**

**Date:** 1840s

**Primary Maker:** Utagawa Hiroshige I

**Medium:** woodblock print; ink and color on paper

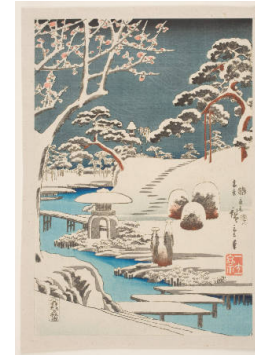


**Title: Flying Fish, White Croaker, and Lily**

**Date:** 1840s

**Primary Maker:** Utagawa Hiroshige I

**Medium:** woodblock print; ink and color on paper



**Title: Snow in the Genji Garden in the Eastern Capital**

**Date:** 12 month tiger year 1854

**Primary Maker:** Utagawa Hiroshige I

**Medium:** woodblock print



**Title: A View of Tago on the Sea: The Fisherman's Nets and Boat on the Beach**

**Date:** 12 month snake year, 1857

**Primary Maker:** Utagawa Hiroshige I

**Medium:** woodblock print; ink and color on paper



**Title: Zojoji Buddhist Temple in Shiba District in Falling Snow**

**Date:** about 1839

**Primary Maker:** Utagawa Hiroshige I

**Medium:** woodblock print



**Title: Picture of the Kazumi-Ga-Seki**

**Date:** about 1843

**Primary Maker:** Utagawa Hiroshige I

**Medium:** woodblock print



**Title: Picture of the Fireworks at Ryogoku Bridge**

**Date:** 1843 or 1844

**Primary Maker:** Utagawa Hiroshige I

**Medium:** woodblock print



**Title: Cherry Blossom Viewing Parties on Mount Asuka**

**Date:** about 1840

**Primary Maker:** Utagawa Hiroshige I

**Medium:** woodblock print; ink and color on paper



**Title: Shin Yoshiwara Nihon Zutsumi Mikaeri Yanagi**

**Date:** 11th month ox year (December 1853)

**Primary Maker:** Utagawa Hiroshige I

**Medium:** woodblock print



**Title: The Shinmei Shinto Shrine in the Shiba District**

**Date:** 3rd month horse year: April 1858

**Primary Maker:** Utagawa Hiroshige I

**Medium:** woodblock print



**Title: A View of the Village of Bamba**

**Date:** about 1836-37

**Primary Maker:** Utagawa Hiroshige I

**Medium:** woodblock print; ink and color on paper



**Title: Emblems of Longevity and Happiness**

**Date:** about 1840

**Primary Maker:** Utagawa Hiroshige I

**Medium:** woodblock print; ink and color on paper



**Title: A Group of Vignettes**

**Date:** 8th month rat year, 1852

**Primary Maker:** Utagawa Hiroshige I

**Medium:** woodblock print



**Title: A Group of Vignettes, the Tokaido Section**

**Date:** 8th month rat year, 1852

**Primary Maker:** Utagawa Hiroshige I

**Medium:** woodblock print



**Title: A Group of Vignettes: the Nankaido Section**

**Date:** 8th month rat year, 1852

**Primary Maker:** Utagawa Hiroshige I

**Medium:** woodblock print; ink and color on paper





**Title:** The Flower-Mansion In The Grounds Of Kinryuzan Buddhist Temple

**Date:** 2nd month ox year, 1853

**Primary Maker:** Utagawa Hiroshige I

**Medium:** woodblock print

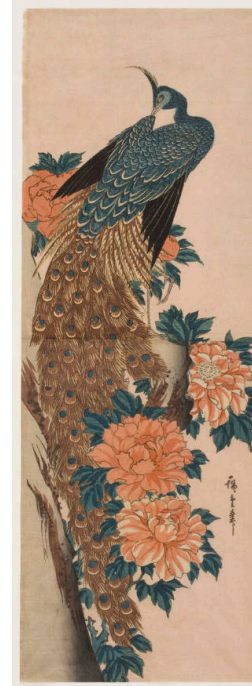


**Title:** The Snow Gorge of the Fuji River

**Date:** about 1838

**Primary Maker:** Utagawa Hiroshige I

**Medium:** woodblock print



**Title:** Peacock and Peonies (Botan ni kujaku)

**Date:** about 1840

**Primary Maker:** Utagawa Hiroshige I

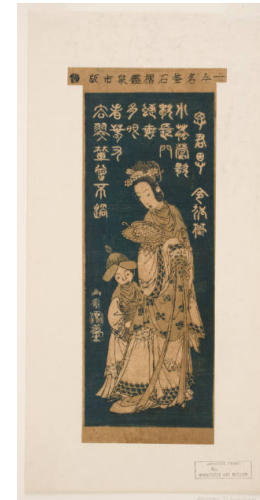
**Medium:** woodblock print



**Title:** Drooping Reeds  
**Date:** about 1830  
**Primary Maker:** Utagawa Hiroshige I  
**Medium:** woodblock print; ink and color on paper



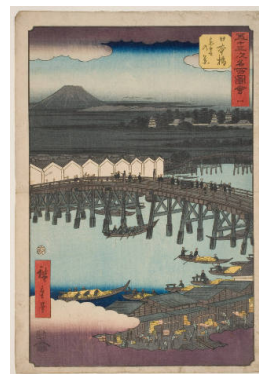
**Title:** A Young Bamboo  
**Date:** about 1830  
**Primary Maker:** Utagawa Hiroshige I  
**Medium:** woodblock print; ink and color on paper



**Title:** A Chinese Princess and a Girl Attendant  
**Date:** about 1830  
**Primary Maker:** Utagawa Hiroshige I  
**Medium:** woodblock print; ink and color on paper



**Title:** Chushingura san Danme Michiuyuki  
**Date:** about 1844  
**Primary Maker:** Utagawa Hiroshige I  
**Medium:** woodblock print; ink and color on paper



**Title:** No. 1, Nihonbashi: View of Dawn Clouds (Nihonbashi, Shinonome no kei)  
**Date:** 1855, 7th month  
**Primary Maker:** Utagawa Hiroshige I  
**Medium:** woodblock print; ink and color on paper

**Title:** No. 2, Shinagawa: View of the Station from Gotenyama (Shinagawa, Gotenyama yori ekij o miru)  
**Date:** 1855, 7th month  
**Primary Maker:** Utagawa Hiroshige I  
**Medium:** woodblock print; ink and color on paper

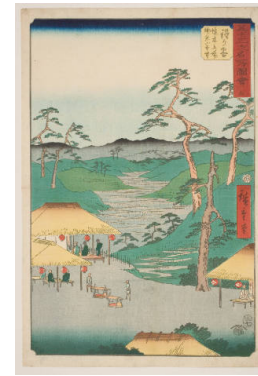




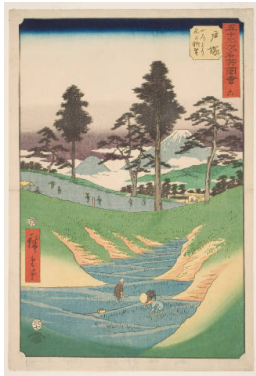
**Title:** No. 3, Kawasaki: Tsurumi River and Namamugi Village (Kawasaki, Tsurumigawa Namamugi no sato)  
**Date:** 1855, 7th month  
**Primary Maker:** Utagawa Hiroshige I  
**Medium:** woodblock print; ink and color on paper



**Title:** Kanagawa: Looking down the Coast From the Great Tea-House  
**Date:** Hare year, 1855, 7th month (August 13)  
**Primary Maker:** Utagawa Hiroshige I  
**Medium:** woodblock print



**Title:** Hodogaya: Mt. Kamakura from the Sakaki Rest-House  
**Date:** Hare year, 1855, 7th month (August 13)  
**Primary Maker:** Utagawa Hiroshige I  
**Medium:** woodblock print; ink and color on paper



**Title:** Totsuka: Fuji Seen from the Mountain Road  
**Date:** Hare year, 1855, 7th month (August 13)  
**Primary Maker:** Utagawa Hiroshige I  
**Medium:** woodblock print



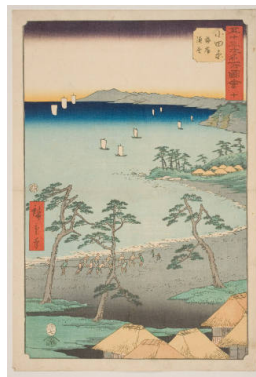
**Title:** No. 7, Fujisawa: Fuji on the Left and the Pine Groves of Nanki (Fujisawa, Nanki no Matsubara hidari no Fuji)  
**Date:** 1855, 7th month  
**Primary Maker:** Utagawa Hiroshige I  
**Medium:** woodblock print; ink and color on paper



**Title:** No. 8, Hiratsuka: Ferry on Bany River and Distant View of Mount yama (Hiratsuka, Banygawa funewatashi yama enb)  
**Date:** 1855, 7th month  
**Primary Maker:** Utagawa Hiroshige I  
**Medium:** woodblock print; ink and color on paper



**Title:** No. 9, iso: Saigy's Hut at Shigitatsu Marsh (iso, Shigitatsusawa Saigyan)  
**Date:** 1855, 7th month  
**Primary Maker:** Utagawa Hiroshige I  
**Medium:** woodblock print; ink and color on paper



**Title:** No. 10, Odawara: Fishing Huts on the Beach (Odawara, kaigan gyosha)  
**Date:** 1855, 7th month  
**Primary Maker:** Utagawa Hiroshige I  
**Medium:** woodblock print; ink and color on paper



**Title:** No. 11, Hakone: Traveling at Night in the Mountains (Hakone, sanch yagy no zu)  
**Date:** 1855, 7th month  
**Primary Maker:** Utagawa Hiroshige I  
**Medium:** woodblock print; ink and color on paper



**Title: Mishima: The First Torii of Mishima Daimyojin**

**Date:** Hare year, 1855, 7th month (August 13)

**Primary Maker:** Utagawa Hiroshige I

**Medium:** woodblock print



**Title: Numazu: Mt. Fuji and Mt. Ashigara after snowfall**

**Date:** Hare year, 1855, 7th month (August 13)

**Primary Maker:** Utagawa Hiroshige I

**Medium:** woodblock print; ink and color on paper



**Title: Hara: Mt. Ashitaka and Mt. Fuji in the distance**

**Date:** Hare year, 1855, 7th month (August 13)

**Primary Maker:** Utagawa Hiroshige I

**Medium:** woodblock print; ink and color on paper

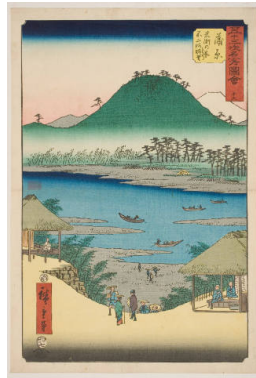


**Title: Yoshiwara: The Fuji Swamp and Narushima Field**

**Date:** Hare year, 1855, 7th month (August 13)

**Primary Maker:** Utagawa Hiroshige I

**Medium:** woodblock print



**Title: No. 16, Kanbara: View of the Fuji River from Iwabuchi Hill (Iwabuchi no oka yori Fujikawa chb)**

**Date:** 1855, 7th month

**Primary Maker:** Utagawa Hiroshige I

**Medium:** woodblock print; ink and color on paper



**Title: No. 17, Yui: The Perilous Satta Pass (Yui, Satta tge oya shirazu)**

**Date:** 1855, 7th month

**Primary Maker:** Utagawa Hiroshige I

**Medium:** woodblock print; ink and color on paper



**Title: No. 18, Okitsu: The Okitsu River and Satta Pass (Okitsu, Okitsugawa Satta no tge)**

**Date:** 1855, 7th month

**Primary Maker:** Utagawa Hiroshige I

**Medium:** woodblock print; ink and color on paper



**Title: No. 19, Ejiri: Tago Bay and the Pine Forest of Miho (Ejiri, Tago no ura, Miho no Matsubara)**

**Date:** 1855, 7th month

**Primary Maker:** Utagawa Hiroshige I

**Medium:** woodblock print; ink and color on paper



**Title: No. 20, Fuch: The Second Block of the Miroku Licensed Quarter by the Abe River (Fuch, Abekawa Miroku nichme)**

**Date:** 1855, 7th month

**Primary Maker:** Utagawa Hiroshige I

**Medium:** woodblock print; ink and color on paper





**Title: Mariko: Tororo Soup Shop**

**Date:** Hare year, 1855, 7th month (August 13)

**Primary Maker:** Utagawa Hiroshige I

**Medium:** woodblock print



**Title: Okabe: The Narrow Ivy Path Leading to Mt. Utsu**

**Date:** Hare year, 1855, 7th month (August 13)

**Primary Maker:** Utagawa Hiroshige I

**Medium:** woodblock print



**Title: Fujieda: Wading across the Ford of the Seto River**

**Date:** Hare year, 1855, 7th month (August 13)

**Primary Maker:** Utagawa Hiroshige I

**Medium:** woodblock print

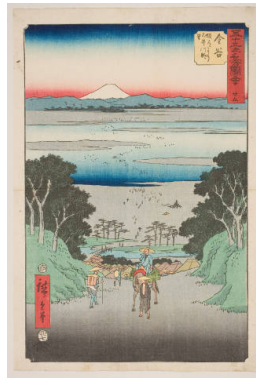


**Title: No. 24, Shimada: The Suruga Bank of the i River (Shimada, igawa Sungan)**

**Date:** 1855, 7th month

**Primary Maker:** Utagawa Hiroshige I

**Medium:** woodblock print; ink and color on paper



**Title: Kanaya: Oi River From the Road**

**Date:** Hare year, 1855, 7th month (August 13)

**Primary Maker:** Utagawa Hiroshige I

**Medium:** woodblock print; ink and color on paper



**Title: No. 26, Nissaka: Distant View of Mount Mugen from Mount Sayononaka (Nissaka, Sayonoyamanaka Mukenzan enb)**

**Date:** 1855, 7th month

**Primary Maker:** Utagawa Hiroshige I

**Medium:** woodblock print; ink and color on paper

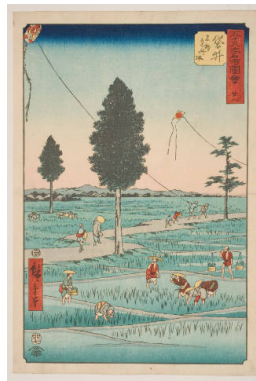


**Title: No. 27, Kakegawa: Crossing the Forty-eight Rapids on the Akiba Road (Kakegawa, Akiba michi shijhachi segoe)**

**Date:** 1855, 7th month

**Primary Maker:** Utagawa Hiroshige I

**Medium:** woodblock print; ink and color on paper

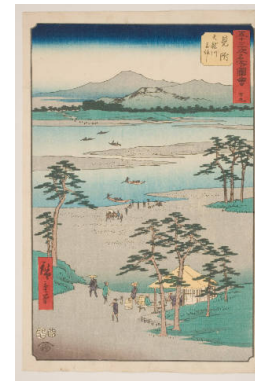


**Title: No. 28, Fukuroi: Famous Ttmi Kites (Fukuroi, meibutsu Ensh tako)**

**Date:** 1855, 7th month

**Primary Maker:** Utagawa Hiroshige I

**Medium:** woodblock print; ink and color on paper



**Title: Mitsuki: Ferry Boats on the Tenryu River**

**Date:** Hare year, 1855, 7th month (August 13)

**Primary Maker:** Utagawa Hiroshige I

**Medium:** woodblock print; ink and color on paper

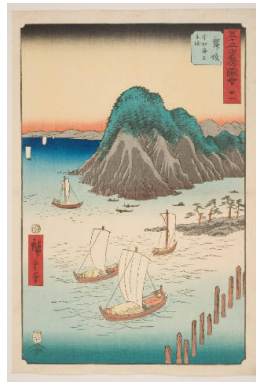


**Title: Hamamatsu: The Famous Zazanza Pine Tree**

**Date:** Hare year, 1855, 7th month (August 13)

**Primary Maker:** Utagawa Hiroshige I

**Medium:** woodblock print

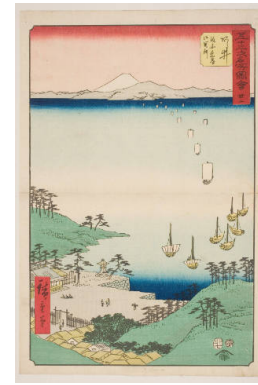


**Title: Maizaka: Imaki Point from the Ferry across the arm of the sea**

**Date:** Hare year, 1855, 7th month (August 13)

**Primary Maker:** Utagawa Hiroshige I

**Medium:** woodblock print



**Title: Arai: Ferry Boats and the Barrier on the Bank**

**Date:** Hare year, 1855, 7th month (August 13)

**Primary Maker:** Utagawa Hiroshige I

**Medium:** woodblock print; ink and color on paper

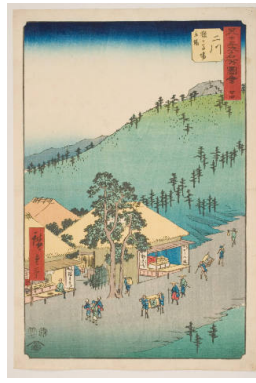


**Title: Shirasuka: View from the Road on the Hillside**

**Date:** Hare year, 1855, 7th month (August 13)

**Primary Maker:** Utagawa Hiroshige I

**Medium:** woodblock print

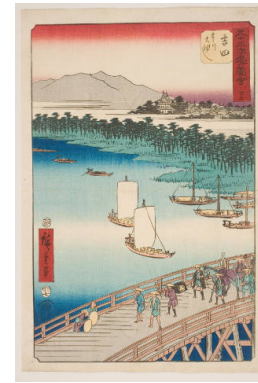


**Title: No. 34, Futakawa: The Rest House of Surugababa (Futakawa, Sarugababa tateba)**

**Date:** 1855, 7th month

**Primary Maker:** Utagawa Hiroshige I

**Medium:** woodblock print; ink and color on paper

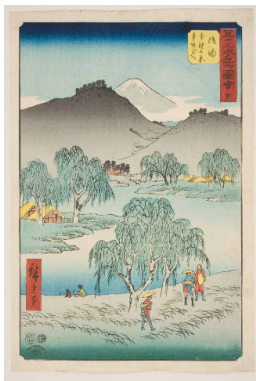


**Title: No. 35, Yoshida: The Great Bridge on the Toyo River (Yoshida, Toyokawa hashi)**

**Date:** 1855, 7th month

**Primary Maker:** Utagawa Hiroshige I

**Medium:** woodblock print; ink and color on paper



**Title: No. 36, Goyu: Motono Plain and Motozaka Pass (Goy, Motonogahara Motozaka goe)**

**Date:** 1855, 7th month

**Primary Maker:** Utagawa Hiroshige I

**Medium:** woodblock print; ink and color on paper

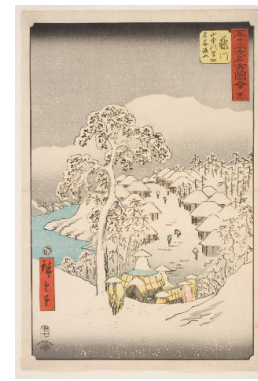


**Title: Akasaka: Scene between Yajirobei and Kitanachi**

**Date:** Hare year, 1855, 7th month (August 13)

**Primary Maker:** Utagawa Hiroshige I

**Medium:** woodblock print; ink and color on paper



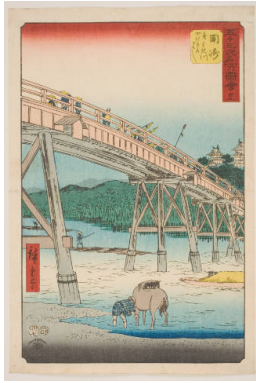
**Title: Fujikawa: Falling Snow**

**Date:** Hare year, 1855, 7th month (August 13)

**Primary Maker:** Utagawa Hiroshige I

**Medium:** woodblock print



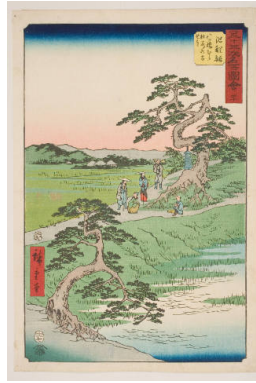


**Title: Okazaki: the Bridge of the Yehagi River**

**Date:** Hare year, 1855, 7th month (August 13)

**Primary Maker:** Utagawa Hiroshige I

**Medium:** woodblock print

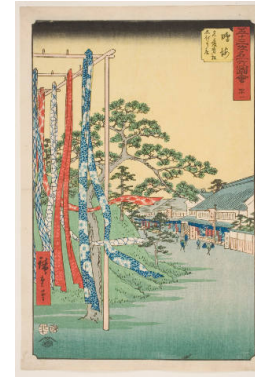


**Title: Chiry: The Former Site of the Irises at Yatsuhashi Village**

**Date:** Hare year, 1855, 7th month (August 13)

**Primary Maker:** Utagawa Hiroshige I

**Medium:** woodblock print



**Title: Narumi: Shops selling Arimatsu Shibori**

**Date:** Hare year, 1855, 7th month (August 13)

**Primary Maker:** Utagawa Hiroshige I

**Medium:** woodblock print



**Title: No. 42, Miya: The Atsuta Terminal of the Shichiri Ferry (Miya: Atsuta no eki Shichiri no watashiguchi)**

**Date:** 1855, 7th month

**Primary Maker:** Utagawa Hiroshige I

**Medium:** woodblock print; ink and color on paper

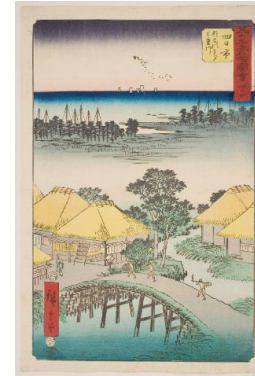


**Title: Kuwana: Ferryboats at Shichiri**

**Date:** Hare year, 1855, 7th month (August 13)

**Primary Maker:** Utagawa Hiroshige I

**Medium:** woodblock print; ink and color on paper



**Title: No. 44, Yokkaichi: Nako Bay and the Mie River (Yokkaichi, Nako-no-ura Miekawa)**

**Date:** 1855, 7th month

**Primary Maker:** Utagawa Hiroshige I

**Medium:** woodblock print; ink and color on paper

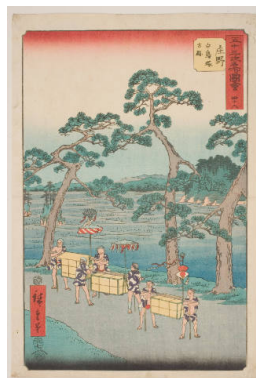


**Title: No. 45, Ishiyakushi: Yoshitsune's Cherry Tree and the Shrine to Noriyori (Ishiyakushi, Yoshitsune sakura Noriyori no hokora)**

**Date:** 1855, 7th month

**Primary Maker:** Utagawa Hiroshige I

**Medium:** woodblock print; ink and color on paper



**Title: Shno: Ancient Remains at Shiratori Mound**

**Date:** Hare year, 1855, 7th month (August 13)

**Primary Maker:** Utagawa Hiroshige I

**Medium:** woodblock print



**Title: No. 47, Kameyama: Wind, Rain and Thunder (Kameyama, fu raimei)**

**Date:** 1855, 7th month

**Primary Maker:** Utagawa Hiroshige I

**Medium:** woodblock print; ink and color on paper



**Title: Seki: Junction of the Side Road to the Shrine**

**Date:** Hare year, 1855, 7th month (August 13)

**Primary Maker:** Utagawa Hiroshige I

**Medium:** woodblock print



**Title: Sakanoshita: The Kannon in the Cave**

**Date:** Hare year, 1855, 7th month (August 13)

**Primary Maker:** Utagawa Hiroshige I

**Medium:** woodblock print



**Title: Tsuchiyama: The Suzuka Foothills and Suzuka River**

**Date:** Hare year, 1855, 7th month (August 13)

**Primary Maker:** Utagawa Hiroshige I

**Medium:** woodblock print

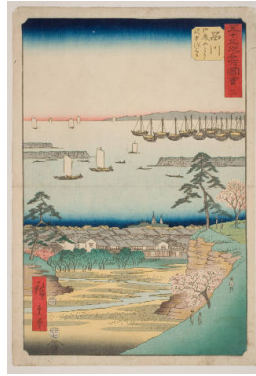


**Title: No. 51, Minakuchi: Famous Pine Trees at the Foot of Mt. Hiramatsu (Minakuchi, meish Hiramatsu yama no fumoto)**

**Date:** 1855, 7th month

**Primary Maker:** Utagawa Hiroshige I

**Medium:** woodblock print; ink and color on paper



**Title: No. 52, Ishibe: Guests at the Inn (Ishibe, ryosha tomarikyaku)**

**Date:** 1855, 7th month

**Primary Maker:** Utagawa Hiroshige I

**Medium:** woodblock print; ink and color on paper



**Title: No. 53, Kusatsu: The Bow and Bowstring Route from Kusatsu to Yabase (Kusatsu, Kusatsu kara Yabase michi no yumi to tsuru)**

**Date:** 1855, 7th month

**Primary Maker:** Utagawa Hiroshige I

**Medium:** woodblock print; ink and color on paper



**Title: No. 54, tsu: View of Lake Biwa and Town of tsu from Kannon Hall of Mii Temple (tsu, Miidera Kannond yori tsu no machi kosui chb)**

**Date:** 1855, 7th month

**Primary Maker:** Utagawa Hiroshige I

**Medium:** woodblock print; ink and color on paper



**Title: Kyto: The Great Bridge at Sanj**

**Date:** Hare year, 1855, 7th month (August 13)

**Primary Maker:** Utagawa Hiroshige I

**Medium:** woodblock print



**Title: The Battle of Mikusa-yama: Yoshitsune Successfully Attacks the Taira Camp at Night**

**Date:** 1834–1835

**Primary Maker:** Utagawa Hiroshige I

**Medium:** woodblock print; ink and color on paper; horizontal oban





**Title:** Minakuchi  
**Date:** about 1842  
**Primary Maker:** Utagawa Hiroshige I  
**Medium:** woodblock print



**Title:** Yaozen Restaurant in Sanya of the Asakusa District of Edo  
**Date:** late 1830s  
**Primary Maker:** Utagawa Hiroshige I  
**Medium:** woodblock print; ink and color on paper; horizontal oban



**Title:** Edo Komyo Kaitei Zukushi: The Ogiya Teahouse at Oji, a Suburb of Edo  
**Date:** about 1840  
**Primary Maker:** Utagawa Hiroshige I  
**Medium:** woodblock print; ink and color on paper



**Title:** Scene From Act I, Ko No Moronao Offering A Love Letter To The Lady Kaoyo-Gozen, Wife Of Enya Hangan  
**Date:** about 1839  
**Primary Maker:** Utagawa Hiroshige I  
**Medium:** woodblock print



**Title:** Scene from Act II, Honzo Cutting off the Pine Branch  
**Date:** about 1839  
**Primary Maker:** Utagawa Hiroshige I  
**Medium:** woodblock print



**Title:** Scene From Act Iii, The Meeting between O Karu and Her Lover Hayaano Kanpei  
**Date:** about 1839  
**Primary Maker:** Utagawa Hiroshige I  
**Medium:** woodblock print



**Title:** Scene From Act Iv, Hara Goemon and Ono Kudayu arriving at the Residence of Enya Hangan  
**Date:** about 1839  
**Primary Maker:** Utagawa Hiroshige I  
**Medium:** woodblock print



**Title:** Scene From Act V, Ono Sadakuro Waylaying the Old Farmer Yoichibei Whom He Robbed and Murdered  
**Date:** about 1839  
**Primary Maker:** Utagawa Hiroshige I  
**Medium:** woodblock print



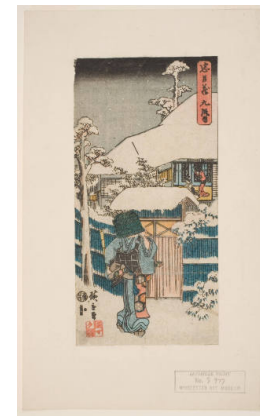
**Title:** Scene From Act Vi, The Body of Yoichibei Being Brought to His Home  
**Date:** about 1839  
**Primary Maker:** Utagawa Hiroshige I  
**Medium:** woodblock print



**Title:** Scene From Act VII, O Karu Coming Down a Ladder from an Upper Room of the Ichimonji-Ya Brothel  
**Date:** about 1839  
**Primary Maker:** Utagawa Hiroshige I  
**Medium:** woodblock print



**Title:** Scene From Act VIII, Tonase, Wife of Kakogawa Honzo and their Daughter Konami  
**Date:** about 1839  
**Primary Maker:** Utagawa Hiroshige I  
**Medium:** woodblock print



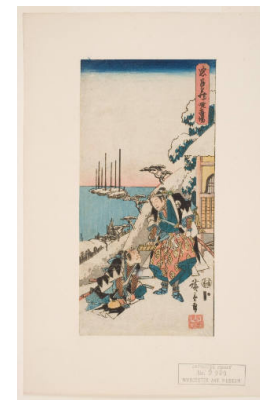
**Title:** Scene From Act IX, Kakogawa Honzo in Komuso Disguise arriving at the Dwelling of Oboshi Yuranosuke  
**Date:** about 1839  
**Primary Maker:** Utagawa Hiroshige I  
**Medium:** woodblock print



**Title:** Scene From Act X, O Sono, the Divorced Wife of Gihei, at the Door of His House  
**Date:** about 1839  
**Primary Maker:** Utagawa Hiroshige I  
**Medium:** woodblock print



**Title:** Scene From Act XI, the Loyal Ronin Crossing Ryogoku Bridge  
**Date:** about 1839  
**Primary Maker:** Utagawa Hiroshige I  
**Medium:** woodblock print



**Title:** Scene From Act XI, Yuranosuke and Goemon, the First to Land at Cape Inamura  
**Date:** about 1839  
**Primary Maker:** Utagawa Hiroshige I  
**Medium:** woodblock print



**Title:** Nihonbashi: Morning View (Asa no kei)  
**Date:** 1834  
**Primary Maker:** Utagawa Hiroshige I  
**Medium:** woodblock print



**Title:** Nihonbashi: Processional Standard Bearers (Gyoretsu furude)  
**Date:** 1834  
**Primary Maker:** Utagawa Hiroshige I  
**Medium:** woodblock print



**Title:** Shinagawa: Hinode (Sunrise)  
**Date:** 1834  
**Primary Maker:** Utagawa Hiroshige I  
**Medium:** woodblock print





**Title:** Shinagawa: Daimyos' Departure (Shinagawa: Shoko Detachi)  
**Date:** 1834  
**Primary Maker:** Utagawa Hiroshige I  
**Medium:** woodblock print



**Title:** Kawasaki: Rokugo Ferry (Tosen)  
**Date:** 1834  
**Primary Maker:** Utagawa Hiroshige I  
**Medium:** woodblock print



**Title:** Kawasaki: Ferry at Rokugo (Rokugo watashi-bune)  
**Date:** n.d.  
**Primary Maker:** Utagawa Hiroshige I  
**Medium:** multicolored woodblock print



**Title:** Kanagawa: Sunset View  
**Date:** 1834  
**Primary Maker:** Utagawa Hiroshige I  
**Medium:** woodblock print



**Title:** Kanagawa, dai no kei  
**Date:** about 1834  
**Primary Maker:** Utagawa Hiroshige I  
**Medium:** woodblock print on paper in color



**Title:** Hodogaya: Shinkame Bridge (Shinkame Bashi)  
**Date:** 1834  
**Primary Maker:** Utagawa Hiroshige I  
**Medium:** woodblock print; ink and color on paper



**Title:** Totsuka: Moto Machi Betsudo  
**Date:** 1834  
**Primary Maker:** Utagawa Hiroshige I  
**Medium:** woodblock print



**Title:** Totsuka: Moto Machi Betsudo  
**Date:** 1834  
**Primary Maker:** Utagawa Hiroshige I  
**Medium:** woodblock print



**Title:** Fujisawa: Yogyoji  
**Date:** 1834  
**Primary Maker:** Utagawa Hiroshige I  
**Medium:** woodblock print; ink and color on paper



**Title:** Hiratsuka: Nawate do  
**Date:** 1834  
**Primary Maker:** Utagawa Hiroshige I  
**Medium:** woodblock print; ink and color on paper



**Title:** Oiso: Tiger Rain  
**Date:** 1834  
**Primary Maker:** Utagawa Hiroshige I  
**Medium:** woodblock print



**Title:** Odawara: The Ford of the Sakogawa  
**Date:** 1834  
**Primary Maker:** Utagawa Hiroshige I  
**Medium:** woodblock print



**Title:** Hakone: Kosui  
**Date:** 1834  
**Primary Maker:** Utagawa Hiroshige I  
**Medium:** woodblock print



**Title:** Mishima: Asa Kiri  
**Date:** 1834  
**Primary Maker:** Utagawa Hiroshige I  
**Medium:** woodblock print



**Title:** Numazu: Ki Kure  
**Date:** 1834  
**Primary Maker:** Utagawa Hiroshige I  
**Medium:** woodblock print



**Title:** Hara: A view of Mount Fuji  
**Date:** 1834  
**Primary Maker:** Utagawa Hiroshige I  
**Medium:** woodblock print; ink and color on paper



**Title:** Yoshiwara: Mount Fuji Seen at the Left  
**Date:** 1834  
**Primary Maker:** Utagawa Hiroshige I  
**Medium:** woodblock print



**Title:** Kanbara: Evening Snow (Kanbara, yoru no yuki)  
**Date:** about 1833–34  
**Primary Maker:** Utagawa Hiroshige I  
**Medium:** woodblock print; ink and color on paper





**Title:** Yui: Satta Mine  
**Date:** 1834  
**Primary Maker:** Utagawa Hiroshige I  
**Medium:** woodblock print



**Title:** Okitsu: View of a Bend in the Okitsu River  
**Date:** 1834  
**Primary Maker:** Utagawa Hiroshige I  
**Medium:** woodblock print



**Title:** Ejiri: Distant View of Mio Beach  
**Date:** 1834  
**Primary Maker:** Utagawa Hiroshige I  
**Medium:** woodblock print; ink and color on paper



**Title:** Fuchu: The Ford of the Abe River  
**Date:** 1834  
**Primary Maker:** Utagawa Hiroshige I  
**Medium:** woodblock print; ink and color on paper



**Title:** Mariko: The "Famous-Product Tea-House"  
**Date:** 1834  
**Primary Maker:** Utagawa Hiroshige I  
**Medium:** woodblock print



**Title:** Okabe: View of the Road Leading up Utsu Hill  
**Date:** 1834  
**Primary Maker:** Utagawa Hiroshige I  
**Medium:** woodblock print



**Title:** Fujieda: Changing Horses and Porters  
**Date:** 1834  
**Primary Maker:** Utagawa Hiroshige I  
**Medium:** woodblock print; ink and color on paper



**Title:** Shimada: View of the Wide Bed  
**Date:** 1834  
**Primary Maker:** Utagawa Hiroshige I  
**Medium:** woodblock print



**Title:** Kanaya: The Far Bank of the Oi River  
**Date:** 1834  
**Primary Maker:** Utagawa Hiroshige I  
**Medium:** woodblock print



**Title: Nissaka: The Road Leading across Sayo Mountain**

**Date:** 1834  
**Primary Maker:** Utagawa Hiroshige I  
**Medium:** woodblock print



**Title: Kakegawa: Distant View of Mount Akiha**

**Date:** 1834  
**Primary Maker:** Utagawa Hiroshige I  
**Medium:** woodblock print; ink and color on paper



**Title: Fukuroi: Travellers Stopping at a Wayside Tea-House**

**Date:** 1834  
**Primary Maker:** Utagawa Hiroshige I  
**Medium:** woodblock print; ink and color on paper



**Title: Mitsuki: Ferry Boats at the Crossing of the Tenryugawa**

**Date:** 1834  
**Primary Maker:** Utagawa Hiroshige I  
**Medium:** woodblock print



**Title: Hamamatsu: Toko no Zu**

**Date:** 1834  
**Primary Maker:** Utagawa Hiroshige I  
**Medium:** woodblock print; ink and color on paper



**Title: Maizaka: View of Imaki Point**

**Date:** 1834  
**Primary Maker:** Utagawa Hiroshige I  
**Medium:** woodblock print



**Title: Arai: Ferry Boats Crossing to Arai**

**Date:** 1834  
**Primary Maker:** Utagawa Hiroshige I  
**Medium:** woodblock print; ink and color on paper



**Title: Shirasuka: A View of the Sea across the Enshu Nada**

**Date:** 1834  
**Primary Maker:** Utagawa Hiroshige I  
**Medium:** woodblock print



**Title: Futagawa: The Inn at the Hill Covered with Small Pines**

**Date:** 1834  
**Primary Maker:** Utagawa Hiroshige I  
**Medium:** woodblock print; ink and color on paper





**Title:** Yoshida: The Long Bridge over the Toyokawa  
**Date:** 1834  
**Primary Maker:** Utagawa Hiroshige I  
**Medium:** woodblock print



**Title:** Goyu: Tabibito Ryujo  
**Date:** 1834  
**Primary Maker:** Utagawa Hiroshige I  
**Medium:** woodblock print; ink and color on paper



**Title:** Akasaka: Travellers Resting and Dining  
**Date:** 1834  
**Primary Maker:** Utagawa Hiroshige I  
**Medium:** woodblock print; ink and color on paper



**Title:** Fujikawa: The Entrance to the Village  
**Date:** 1834  
**Primary Maker:** Utagawa Hiroshige I  
**Medium:** woodblock print; ink and color on paper



**Title:** Okazaki: The Long Bridge across the Yehagi River  
**Date:** 1834  
**Primary Maker:** Utagawa Hiroshige I  
**Medium:** woodblock print



**Title:** Chiryu: Horses in the Fields  
**Date:** 1834  
**Primary Maker:** Utagawa Hiroshige I  
**Medium:** woodblock print; ink and color on paper



**Title:** Narami: Shops for the Sale of Shibori  
**Date:** 1834  
**Primary Maker:** Utagawa Hiroshige I  
**Medium:** woodblock print



**Title:** Miya: Men and Horses pulling a Dashi  
**Date:** 1834  
**Primary Maker:** Utagawa Hiroshige I  
**Medium:** woodblock print



**Title:** Kuwana: The Mouth of the Seven-Ri  
**Date:** 1834  
**Primary Maker:** Utagawa Hiroshige I  
**Medium:** woodblock print



**Title:** Yokkaichi: The Backwater and Marshes of the Sanchokawa  
**Date:** 1834  
**Primary Maker:** Utagawa Hiroshige I  
**Medium:** woodblock print



**Title:** Ishiyakushi: The Village of Ishiyakushi and the Buddhist Temple in a grove at the left  
**Date:** 1834  
**Primary Maker:** Utagawa Hiroshige I  
**Medium:** woodblock print; ink and color on paper



**Title:** Shno: Driving Rain (Shno, hakuu)  
**Date:** about 1833-34  
**Primary Maker:** Utagawa Hiroshige I  
**Medium:** woodblock print; ink and color on paper



**Title:** Shno: Driving Rain (Shno, hakuu)  
**Date:** about 1833-34  
**Primary Maker:** Utagawa Hiroshige I  
**Medium:** woodblock print; ink and color on paper



**Title:** Kameyama: View of Kameyama in Clear Weather after a Snowfall  
**Date:** 1834  
**Primary Maker:** Utagawa Hiroshige I  
**Medium:** woodblock print; ink and color on paper



**Title:** Seki: An Early Start From Headquarters  
**Date:** 1834  
**Primary Maker:** Utagawa Hiroshige I  
**Medium:** woodblock print



**Title:** Saka-No-Shita: Throw-Away-Brush Peak  
**Date:** 1834  
**Primary Maker:** Utagawa Hiroshige I  
**Medium:** woodblock print



**Title:** Tsuchiyama: A Spring Shower  
**Date:** 1834  
**Primary Maker:** Utagawa Hiroshige I  
**Medium:** woodblock print



**Title:** Minakuchi: View of a Field  
**Date:** 1834  
**Primary Maker:** Utagawa Hiroshige I  
**Medium:** woodblock print





**Title:** Ishibe: A Village on the Bank of the Megawa  
**Date:** 1834  
**Primary Maker:** Utagawa Hiroshige I  
**Medium:** woodblock print; ink and color on paper



**Title:** Kusatsu: Famous Products of the Surrounding District Were for Sale  
**Date:** 1834  
**Primary Maker:** Utagawa Hiroshige I  
**Medium:** woodblock print



**Title:** Otsu: View of the Soii Tea-House  
**Date:** 1834  
**Primary Maker:** Utagawa Hiroshige I  
**Medium:** woodblock print



**Title:** Kyoto: The Great Bridge across the Kamo River at Third Street  
**Date:** 1834  
**Primary Maker:** Utagawa Hiroshige I  
**Medium:** woodblock print



**Title:** The Vesper Bell at Ikegami Buddhist Temple  
**Date:** about 1837  
**Primary Maker:** Utagawa Hiroshige I  
**Medium:** woodblock print



**Title:** Shibaura in Clear Weather with a Fresh Breeze  
**Date:** about 1837  
**Primary Maker:** Utagawa Hiroshige I  
**Medium:** woodblock print



**Title:** Sagami: View of the Harbor of Uraga  
**Date:** 7th month horse year, 1846  
**Primary Maker:** Utagawa Hiroshige I  
**Medium:** woodblock print



**Title:** Awa: View of the Bay with the Village of Kominato  
**Date:** 7th month horse year, 1846  
**Primary Maker:** Utagawa Hiroshige I  
**Medium:** woodblock print; ink and color on paper



**Title:** Viewing Cherry Trees in Full Bloom on Tenjinyama in Yasui  
**Date:** about 1830  
**Primary Maker:** Utagawa Hiroshige I  
**Medium:** woodblock print



**Title:** The Great Pine Tree at Eh Naniwa-Ya Tea-House in Adachi Street

**Date:** about 1830

**Primary Maker:** Utagawa Hiroshige I

**Medium:** woodblock print



**Title:** Sanuki: The Harbor at Marugame

**Date:** about 1838

**Primary Maker:** Utagawa Hiroshige I

**Medium:** woodblock print

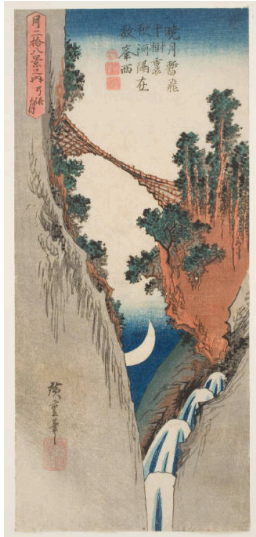


**Title:** Osaka: The Harbor at Osaka at the Mouth of the Ajikawa

**Date:** about 1838

**Primary Maker:** Utagawa Hiroshige I

**Medium:** woodblock print



**Title:** The Bow-Shaped Moon

**Date:** about 1833

**Primary Maker:** Utagawa Hiroshige I

**Medium:** woodblock print



**Title:** The Autumn Full Moon

**Date:** about 1833

**Primary Maker:** Utagawa Hiroshige I

**Medium:** woodblock print



**Title:** Evening Glow at Seta (Seta no sekish)

**Date:** 1830s-1840s

**Primary Maker:** Utagawa Hiroshige I

**Medium:** woodblock print; ink and color on paper



**Title:** Returning Sails at Yabase (Yabase kihan)

**Date:** 1830s-1840s

**Primary Maker:** Utagawa Hiroshige I

**Medium:** woodblock print; ink and color on paper



**Title:** Evening Bell at Miidera Temple (Mii bansh)

**Date:** 1830s-1840s

**Primary Maker:** Utagawa Hiroshige I

**Medium:** woodblock print; ink and color on paper



**Title:** Clearing Weather at Awazu (Awazu seiran)

**Date:** 1830s-1840s

**Primary Maker:** Utagawa Hiroshige I

**Medium:** woodblock print; ink and color on paper





**Title: Descending Geese at Katada (Katada rakugan)**

**Date:** 1830s-1840s

**Primary Maker:** Utagawa Hiroshige I

**Medium:** woodblock print; ink and color on paper



**Title: Autumn Moon at Ishiyama (Ishiyama shgetsu)**

**Date:** 1830s-1840s

**Primary Maker:** Utagawa Hiroshige I

**Medium:** woodblock print; ink and color on paper



**Title: Evening Snow at Mount Hira (Hira bosetsu)**

**Date:** 1830s-1840s

**Primary Maker:** Utagawa Hiroshige I

**Medium:** woodblock print; ink and color on paper

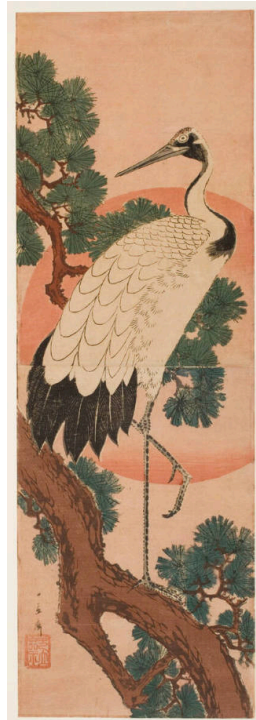


**Title: Night Rain at Karasaki (Karasaki yau)**

**Date:** 1830s-1840s

**Primary Maker:** Utagawa Hiroshige I

**Medium:** woodblock print; ink and color on paper

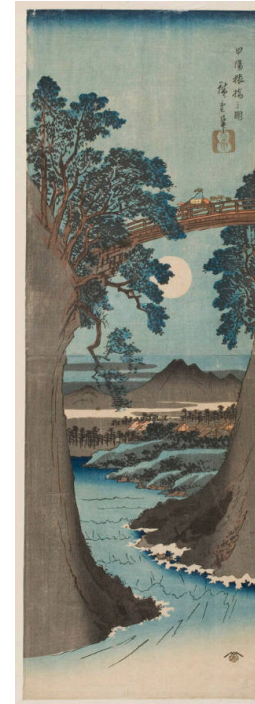


**Title: Japanese Crane, Pine Tree And Rising Sun (Kyokujitsu Matsu Ni Tsuru)**

**Date:** mid-1830s

**Primary Maker:** Utagawa Hiroshige I

**Medium:** woodblock print, ink and color on paper; kakemono-e



**Title: The Monkey Bridge in Kai Province**

**Date:** 1841-1842

**Primary Maker:** Utagawa Hiroshige I

**Medium:** ink and color on paper



**Title:** The Buddhist Monk Saigyo Hoshi Contemplating Mt. Fuji  
**Date:** about 1837  
**Primary Maker:** Utagawa Hiroshige I  
**Medium:** woodblock print



**Title:** The Shichi Fukujin On Board The Takara-Bune Sailing Into Port On New Year's Morning  
**Date:** about 1842  
**Primary Maker:** Utagawa Hiroshige I  
**Medium:** woodblock print



**Title:** Viewing Cherry Flowers on Asukayama  
**Date:** about 1853  
**Primary Maker:** Utagawa Hiroshige I  
**Medium:** woodblock print



**Title:** A View of Susaki on the Shore of Edo Bay  
**Date:** about 1830  
**Primary Maker:** Utagawa Hiroshige I  
**Medium:** woodblock print; ink and color on paper



**Title:** Picture of Takanawa  
**Date:** about 1838  
**Primary Maker:** Utagawa Hiroshige I  
**Medium:** woodblock print



**Title:** View of Takanawa at Twilight  
**Date:** about 1836  
**Primary Maker:** Utagawa Hiroshige I  
**Medium:** woodblock print

---

**Title: View of Takanawa  
at Twilight**

**Date:** about 1836

**Primary Maker:** Utagawa  
Hiroshige I

**Medium:** woodblock print



**Title: Picture of  
Matsuchiyama**

**Date:** about 1838

**Primary Maker:** Utagawa  
Hiroshige I

**Medium:** woodblock print



**Title: Picture of Toeizan  
Buddhist Temple, Ueno**

**Date:** about 1836

**Primary Maker:** Utagawa  
Hiroshige I

**Medium:** woodblock print



**Title: Snow in the  
Grounds of the  
Tenmangu Shrine at  
Kameido, Edo**

**Date:** about 1836

**Primary Maker:** Utagawa  
Hiroshige I

**Medium:** woodblock print



**Title: The Sazaido, the  
Main Building of the  
Shrine of the Five  
Hundred Rakan**

**Date:** about 1836

**Primary Maker:** Utagawa  
Hiroshige I

**Medium:** woodblock print



**Title: White Rain at  
Nippon Bridge, Edo**

**Date:** about 1836

**Primary Maker:** Utagawa  
Hiroshige I

**Medium:** woodblock print



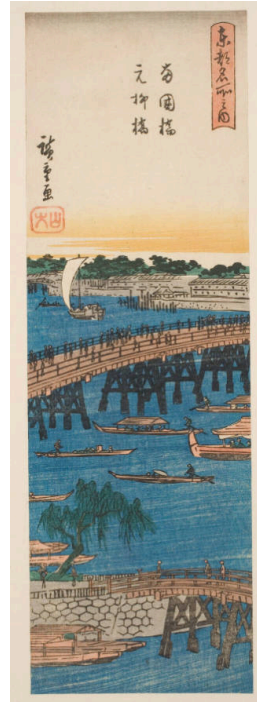


**Title: Cherry Trees in Bloom at Night in the New Yoshiwara**

**Date:** n.d.

**Primary Maker:** Utagawa Hiroshige I

**Medium:** woodblock print; ink and color on paper



**Title: View of Ryogoku Bridge from Eitai Bridge**

**Date:** about 1838

**Primary Maker:** Utagawa Hiroshige I

**Medium:** woodblock print



**Title: Picture of Nihon Bashi No Zu**

**Date:** about 1838

**Primary Maker:** Utagawa Hiroshige I

**Medium:** woodblock print



**Title: Picture of the Sumidagawa Ferry-Place in Clear Weather after a Snowfall**

**Date:** about 1838

**Primary Maker:** Utagawa Hiroshige I

**Medium:** woodblock print



**Title: Yoroi Ferry**

**Date:** about 1838

**Primary Maker:** Utagawa Hiroshige I

**Medium:** woodblock print



**Title: Juvenile Procession Travel Imitation**

**Date:** c.1835

**Primary Maker:** Utagawa Hiroshige I

**Medium:** woodblock print; ink and color on paper



**Title: Crowds Visiting the Shrine of Benzaiten at Enoshima**

**Date:** 1851

**Primary Maker:** Utagawa Hiroshige I

**Medium:** ink and color on paper



**Title: Picture Of The Ancient Custom Of Uwanariuchi**

**Date:** about 1840

**Primary Maker:** Utagawa Hiroshige I

**Medium:** woodblock print



**Title: Furyu Genji: E-Awase**

**Date:** 4th month ox year, 1853

**Primary Maker:** Utagawa Hiroshige I

**Medium:** woodblock print; ink and color on paper



**Title: The Nakamura Theater (Nakamura za)**

**Date:** 1854

**Primary Maker:** Utagawa Hiroshige I

**Medium:** woodblock print; ink and color on paper



**Title: The Whirlpools of Awa**

**Date:** 1857

**Primary Maker:** Utagawa Hiroshige I

**Medium:** ink and color on paper



**Title: Mountain River on the Kiso Road (Kisoji no sansen)**

**Date:** 1857, 8th month

**Primary Maker:** Utagawa Hiroshige I

**Medium:** woodblock print; ink and color on paper