

# Basic Report



**Title:** Large Disk with Bands of Small Protuberances and Incised Bovine Masks  
**Date:** 3rd century BCE  
**Primary Maker:** Chinese  
**Medium:** nephrite



**Title:** Ritual Wine Container (Fang i; 'rectangular section')  
**Date:** Shang Dynasty (1600–1050 BCE)  
**Primary Maker:** Chinese  
**Medium:** bronze



**Title:** Covered Ritual Wine Container (yu)  
**Date:** Shang Dynasty  
**Primary Maker:** Chinese  
**Medium:** bronze



**Title:** Ming Huang and Yang Gueifei Listening to Music  
**Date:** early Ming Dynasty (1368–1400)  
**Primary Maker:** Chinese  
**Medium:** ink and color on silk



**Title:** Bamboo, Orchids, Rock, and Calligraphy  
**Date:** about 1530  
**Primary Maker:** Wen Zhengming  
**Medium:** handscroll; ink on paper



**Title:** Seated Buddha with Attending Bodhisattva  
**Date:** early 6th century  
**Primary Maker:** Chinese  
**Medium:** limestone with polychrome



**Title:** Head of a Buddha  
**Date:** 550–577  
**Medium:** Limestone



**Title:** HU, Ritual wine cooler  
**Date:** Han Dynasty (206 B.C.E. –220 C.E.)  
**Primary Maker:** Chinese  
**Medium:** earthenware, painted in green and red



**Title:** Globular Vase with Stylized Peony Scroll Design (Blue-and-white ware)  
**Date:** early 15th century, Ming dynasty (1368–1644)  
**Primary Maker:** Chinese  
**Medium:** porcelain with decoration in high-iron cobalt blue pigment under a clear lime-alkali glaze

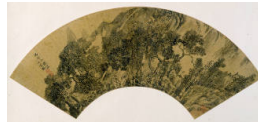


**Title: Mirror**

**Date:** Tang Dynasty (618–906 C.E.)

**Primary Maker:** Chinese

**Medium:** gilt bronze



**Title: Landscape with  
Figures under a Tree**

**Date:** 1616

**Primary Maker:** Ding Yunpeng

**Medium:** ink and gold leaf on  
paper



**Title: Autumn Landscape**

**Date:** 1701

**Primary Maker:** Dao Ji (Shitao)

**Medium:** hanging scroll; ink  
and color on paper