

# Basic Report

---



**Title: Alligators**

**Date:** 1917

**Primary Maker:** John Singer Sargent

**Medium:** graphite on medium thick, smooth, cream wove paper

**Title: Alpine Landscape**

**Date:** about 1900

**Primary Maker:** John Singer Sargent

**Medium:** graphite on medium, smooth cream wove paper



**Title: Ballet Dancer After Degas**

**Date:** about 1878

**Primary Maker:** John Singer Sargent

**Medium:** graphite on thin, smooth cream wove paper



**Title: Bull Fight**

**Date:** 1900–1925

**Primary Maker:** John Singer Sargent

**Medium:** black and brown ink applied with pen, over graphite on cream laid paper



**Title: Doe**

**Date:** by 1925

**Primary Maker:** John Singer Sargent

**Medium:** graphite on medium, slightly textured cream wove paper



**Title: Eagle**

**Date:** 1900-1925

**Primary Maker:** John Singer Sargent

**Medium:** charcoal on thin, smooth buff wove paper (sketchbook page)



**Title:** Museum Sketches  
(Portrait Of Eleanor  
Lopez De Villanueva,  
After Antonis Mor, Left  
Forearm, After Francois  
Rude)

**Date:** by 1925

**Primary Maker:** John Singer  
Sargent

**Medium:** graphite on thin,  
smooth cream wove paper

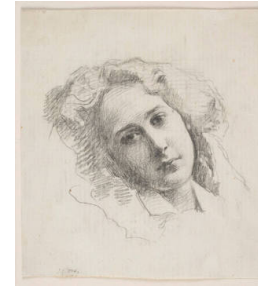


**Title:** Portrait Of George  
Marston Whitin

**Date:** 1917

**Primary Maker:** John Singer  
Sargent

**Medium:** charcoal on medium,  
slightly textured cream laid  
paper



**Title:** Portrait Sketch

**Date:** about 1910

**Primary Maker:** John Singer  
Sargent

**Medium:** graphite on thin,  
slightly textured off-white laid  
paper (tissue)



**Title:** Portrait Sketch Of  
A Woman

**Date:** before 1925

**Primary Maker:** John Singer  
Sargent

**Medium:** graphite on medium,  
smooth cream wove paper



**Title:** Portrait Sketch of a  
Woman

**Date:** by 1925

**Primary Maker:** John Singer  
Sargent

**Medium:** graphite on medium,  
smooth cream wove paper



**Title:** Portrait Sketch of a  
Woman Reading

**Date:** by 1925

**Primary Maker:** John Singer  
Sargent

**Medium:** graphite on thin,  
smooth off-white wove paper



**Title:** Portrait Sketch of a  
Young Man

**Date:** by 1925

**Primary Maker:** John Singer  
Sargent

**Medium:** graphite on medium,  
slightly textured white paper



**Title:** Portrait Sketch Of  
Emily

**Date:** 1871

**Primary Maker:** John Singer  
Sargent

**Medium:** graphite on medium,  
smooth cream wove paper



**Title:** Sketch of a Draped  
Kneeling Figure

**Date:** n.d.

**Primary Maker:** John Singer  
Sargent

**Medium:** charcoal on medium,  
slightly textured cream laid  
paper

**Title: Sketch of a  
Hovering Angel**

**Date:** n.d.

**Primary Maker:** John Singer  
Sargent

**Medium:** charcoal on medium,  
slightly textured cream laid  
paper

**Title: Sketch of a  
Sculpture of Saint  
Euphrasie**

**Date:** by 1925

**Primary Maker:** John Singer  
Sargent

**Medium:** graphite on medium,  
smooth cream wove paper



**Title: Sketch of a  
Sculpture of Saint  
Euphrasie**

**Date:** by 1925

**Primary Maker:** John Singer  
Sargent

**Medium:** graphite on medium,  
smooth cream wove paper



**Title: Sketch of Draped  
Legs**

**Date:** n.d.

**Primary Maker:** John Singer  
Sargent

**Medium:** charcoal on medium,  
slightly textured cream laid  
paper



**Title: Sketch of Kneeling  
Male Nude**

**Date:** n.d.

**Primary Maker:** John Singer  
Sargent

**Medium:** charcoal on medium,  
slightly textured cream laid  
paper



**Title: Sketch of Male  
Nude and Baluster**

**Date:** n.d.

**Primary Maker:** John Singer  
Sargent

**Medium:** graphite on medium,  
smooth tan laid tracing paper



**Title:** Sketch of Seated Female Nude  
**Date:** n.d.  
**Primary Maker:** John Singer Sargent  
**Medium:** charcoal on medium, slightly textured cream laid paper



**Title:** Sketch of Seated Male Nude  
**Date:** n.d.  
**Primary Maker:** John Singer Sargent  
**Medium:** charcoal on medium, slightly textured cream laid paper



**Title:** Sketch of Two Male Nudes  
**Date:** n.d.  
**Primary Maker:** John Singer Sargent  
**Medium:** charcoal on medium, slightly textured cream laid paper

**Title:** Standing Male Nude  
**Date:** n.d.  
**Primary Maker:** John Singer Sargent  
**Medium:** charcoal on medium, slightly textured cream laid paper



**Title:** Studies of Hands  
**Date:** n.d.  
**Primary Maker:** John Singer Sargent  
**Medium:** charcoal on medium, smooth green wove paper



**Title:** Three Alligators  
**Date:** 1917  
**Primary Maker:** John Singer Sargent  
**Medium:** graphite on medium thick, smooth, cream wove paper



**Title:** Two Alligators  
**Date:** 1917  
**Primary Maker:** John Singer Sargent  
**Medium:** graphite on medium thick, smooth, cream wove paper



**Title:** Two Alligators  
**Date:** 1917  
**Primary Maker:** John Singer Sargent  
**Medium:** graphite on medium thick, smooth, cream wove paper



**Title:** Two Eagles  
**Date:** 1900–1925  
**Primary Maker:** John Singer Sargent  
**Medium:** charcoal on thin, smooth buff wove paper (sketchbook page)

---

**Title:** A Wise Virgin  
**(Sketch of Gothic  
Sculptural Figure from  
Cathedral Facade)**  
**Date:** late 1800s–early 1900s  
**Primary Maker:** John Singer  
Sargent  
**Medium:** graphite on medium,  
smooth cream wove paper