

# Basic Report

---



**Title: Alligators**

**Date:** 1917

**Primary Maker:** John Singer Sargent

**Medium:** graphite on medium thick, smooth, cream wove paper

**Title: Alpine Landscape**

**Date:** about 1900

**Primary Maker:** John Singer Sargent

**Medium:** graphite on medium, smooth cream wove paper



**Title: Ballet Dancer After Degas**

**Date:** about 1878

**Primary Maker:** John Singer Sargent

**Medium:** graphite on thin, smooth cream wove paper



**Title: The Bathers**

**Date:** 1917

**Primary Maker:** John Singer Sargent

**Medium:** watercolor and opaque watercolor, over graphite, on thick, textured, cream wove paper



**Title: Boats at Anchor**

**Date:** 1917

**Primary Maker:** John Singer Sargent

**Medium:** transparent watercolor over graphite on cream wove paper



**Title: Bull Fight**

**Date:** 1900–1925

**Primary Maker:** John Singer Sargent

**Medium:** black and brown ink applied with pen, over graphite on cream laid paper



**Title: Derelicts**

**Date:** 1917

**Primary Maker:** John Singer Sargent

**Medium:** watercolor, with rewetting, blotting, and scraping out, over graphite on medium thick, textured, cream wove paper



**Title: Doe**

**Date:** by 1925

**Primary Maker:** John Singer Sargent

**Medium:** graphite on medium, slightly textured cream wove paper



**Title: Eagle**

**Date:** 1900–1925

**Primary Maker:** John Singer Sargent

**Medium:** charcoal on thin, smooth buff wove paper (sketchbook page)



**Title:** Esther Fiske Hammond, Mrs. Gardiner Greene Hammond  
**Date:** 1903  
**Primary Maker:** John Singer Sargent  
**Medium:** oil on canvas



**Title:** Fish Weirs  
**Date:** 1922  
**Primary Maker:** John Singer Sargent  
**Medium:** watercolor over graphite on cream wove paper



**Title:** Katharine Chase Pratt  
**Date:** 1890  
**Primary Maker:** John Singer Sargent  
**Medium:** oil on canvas



**Title:** Lady Warwick and Her Son  
**Date:** 1905  
**Primary Maker:** John Singer Sargent  
**Medium:** oil on canvas



**Title:** Lizzie B. Dewey (Mrs. Francis Henshaw Dewey II)  
**Date:** 1890  
**Primary Maker:** John Singer Sargent  
**Medium:** oil on canvas



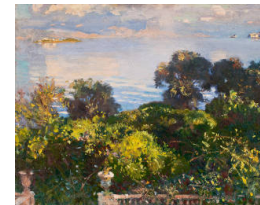
**Title:** Mrs. Alexander H. Bullock  
**Date:** 1890  
**Primary Maker:** John Singer Sargent  
**Medium:** oil on canvas



**Title:** Muddy Alligators  
**Date:** 1917  
**Primary Maker:** John Singer Sargent  
**Medium:** watercolor over graphite, with masking out and scraping, on thick, textured, cream wove paper



**Title:** Museum Sketches (Portrait Of Eleanor Lopez De Villanueva, After Antonis Mor, Left Forearm, After Francois Rude)  
**Date:** by 1925  
**Primary Maker:** John Singer Sargent  
**Medium:** graphite on thin, smooth cream wove paper



**Title:** Oranges at Corfu  
**Date:** about 1909  
**Primary Maker:** John Singer Sargent  
**Medium:** oil on canvas



**Title: Palms**

**Date:** 1917

**Primary Maker:** John Singer Sargent

**Medium:** watercolor over graphite on off-white wove paper



**Title: The Pool**

**Date:** 1917

**Primary Maker:** John Singer Sargent

**Medium:** watercolor over graphite on moderately thick, textured off-white wove paper



**Title: Portrait Of George Marston Whitin**

**Date:** 1917

**Primary Maker:** John Singer Sargent

**Medium:** charcoal on medium, slightly textured cream laid paper



**Title: Portrait Sketch**

**Date:** about 1910

**Primary Maker:** John Singer Sargent

**Medium:** graphite on thin, slightly textured off-white laid paper (tissue)



**Title: Portrait Sketch Of A Woman**

**Date:** before 1925

**Primary Maker:** John Singer Sargent

**Medium:** graphite on medium, smooth cream wove paper



**Title: Portrait Sketch of a Woman**

**Date:** by 1925

**Primary Maker:** John Singer Sargent

**Medium:** graphite on medium, smooth cream wove paper



**Title: Portrait Sketch of a Woman Reading**

**Date:** by 1925

**Primary Maker:** John Singer Sargent

**Medium:** graphite on thin, smooth off-white wove paper



**Title: Portrait Sketch of a Young Man**

**Date:** by 1925

**Primary Maker:** John Singer Sargent

**Medium:** graphite on medium, slightly textured white paper

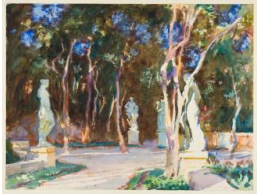


**Title: Portrait Sketch Of Emily**

**Date:** 1871

**Primary Maker:** John Singer Sargent

**Medium:** graphite on medium, smooth cream wove paper



**Title: Shady Paths, Vizcaya**

**Date:** 1917

**Primary Maker:** John Singer Sargent

**Medium:** watercolor over graphite on thick, textured, cream wove paper



**Title: Sketch of a Draped Kneeling Figure**

**Date:** n.d.

**Primary Maker:** John Singer Sargent

**Medium:** charcoal on medium, slightly textured cream laid paper

**Title: Sketch of a Hovering Angel**

**Date:** n.d.

**Primary Maker:** John Singer Sargent

**Medium:** charcoal on medium, slightly textured cream laid paper

**Title: Sketch of a Sculpture of Saint Euphrasie**

**Date:** by 1925

**Primary Maker:** John Singer Sargent

**Medium:** graphite on medium, smooth cream wove paper



**Title: Sketch of a Sculpture of Saint Euphrasie**

**Date:** by 1925

**Primary Maker:** John Singer Sargent

**Medium:** graphite on medium, smooth cream wove paper



**Title: Sketch of Draped Legs**

**Date:** n.d.

**Primary Maker:** John Singer Sargent

**Medium:** charcoal on medium, slightly textured cream laid paper





**Title: Sketch of Kneeling Male Nude**

**Date:** n.d.

**Primary Maker:** John Singer Sargent

**Medium:** charcoal on medium, slightly textured cream laid paper



**Title: Sketch of Male Nude and Baluster**

**Date:** n.d.

**Primary Maker:** John Singer Sargent

**Medium:** graphite on medium, smooth tan laid tracing paper



**Title: Sketch of Seated Female Nude**

**Date:** n.d.

**Primary Maker:** John Singer Sargent

**Medium:** charcoal on medium, slightly textured cream laid paper



**Title: Sketch of Seated Male Nude**

**Date:** n.d.

**Primary Maker:** John Singer Sargent

**Medium:** charcoal on medium, slightly textured cream laid paper



**Title: Sketch of Two Male Nudes**

**Date:** n.d.

**Primary Maker:** John Singer Sargent

**Medium:** charcoal on medium, slightly textured cream laid paper

**Title: Standing Male Nude**

**Date:** n.d.

**Primary Maker:** John Singer Sargent

**Medium:** charcoal on medium, slightly textured cream laid paper



**Title:** Studies of Hands  
**Date:** n.d.  
**Primary Maker:** John Singer Sargent  
**Medium:** charcoal on medium, smooth green wove paper



**Title:** Three Alligators  
**Date:** 1917  
**Primary Maker:** John Singer Sargent  
**Medium:** graphite on medium thick, smooth, cream wove paper



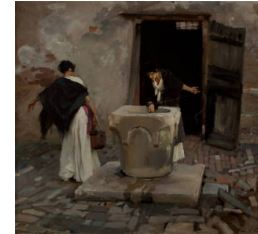
**Title:** Two Alligators  
**Date:** 1917  
**Primary Maker:** John Singer Sargent  
**Medium:** graphite on medium thick, smooth, cream wove paper



**Title:** Two Alligators  
**Date:** 1917  
**Primary Maker:** John Singer Sargent  
**Medium:** graphite on medium thick, smooth, cream wove paper



**Title:** Two Eagles  
**Date:** 1900–1925  
**Primary Maker:** John Singer Sargent  
**Medium:** charcoal on thin, smooth buff wove paper (sketchbook page)



**Title:** Venetian Water Carriers  
**Date:** 1880–1882  
**Primary Maker:** John Singer Sargent  
**Medium:** oil on canvas



**Title:** Venice  
**Date:** about 1902  
**Primary Maker:** John Singer Sargent  
**Medium:** watercolor over graphite on cream wove paper

**Title:** A Wise Virgin  
(Sketch of Gothic Sculptural Figure from Cathedral Facade)  
**Date:** late 1800s–early 1900s  
**Primary Maker:** John Singer Sargent  
**Medium:** graphite on medium, smooth cream wove paper