

# Basic Report

---



**Title:** Man on Horse  
**Date:** 2009  
**Primary Maker:** Zhang Minjie  
**Medium:** woodcut



**Title:** Bamboo Bridge  
**Date:** 20th Century  
**Primary Maker:** Haren Das  
**Medium:** woodcut on cream wove paper



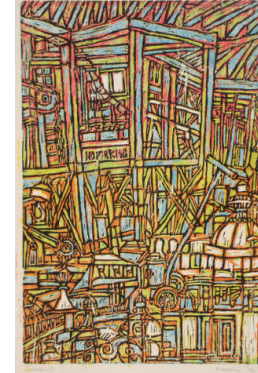
**Title:** Self Portrait  
**Date:** 1989  
**Primary Maker:** Walter D'Souza  
**Medium:** woodcut on cream wove paper



**Title:** Yellow Woman  
**Date:** 1964  
**Primary Maker:** Laxma Goud  
**Medium:** woodcut on cream wove paper



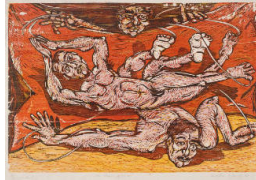
**Title:** Reclining Woman  
**Date:** 1964  
**Primary Maker:** Laxma Goud  
**Medium:** color woodcut on cream wove paper



**Title:** Citiscap  
**Date:** 1992  
**Primary Maker:** Goud  
**Medium:** woodcut on creme wove paper



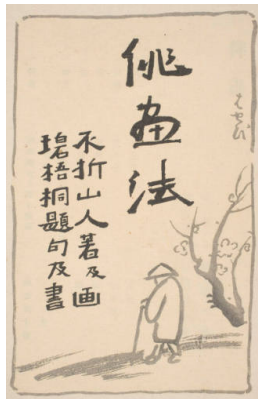
**Title:** Architectural Caprice  
**Date:** 1992  
**Primary Maker:** Goud  
**Medium:** woodcut on cream wove paper



**Title:** My Show Goes On  
**Date:** 1986  
**Primary Maker:** Walter D'Souza  
**Medium:** woodcut on cream wove paper



**Title:** Clouds (Upper Lyell Trail Along Lyell Fork, Sierra)  
**Date:** 1930  
**Primary Maker:** Chiura Obata  
**Medium:** color woodcut on medium, smooth cream Japan paper



**Title:** Haiga Ho (Haiga Manner)  
**Date:** 1909  
**Primary Maker:** Nakamura Fusetsu  
**Medium:** woodcuts and collotype, string-bound Japanese style in flexible covers with stamped title, enclosed in protective modern clasped chitsu case

**Title:** Autumn  
**Date:** Taishō 4 to 6 (1915-17)  
**Primary Maker:** Japanese  
**Medium:** third of four volumes in a clasped chitsu case. String-bound Japanese style in printed paper covers with 30 full page color woodcuts

**Title:** Winter  
**Date:** Taishō 4 to 6 (1915-17)  
**Primary Maker:** Japanese  
**Medium:** fourth of four volumes in a clasped chitsu case. String-bound Japanese style in printed paper covers with 30 full page color woodcuts

**Title:** Spring  
**Date:** Taishō 4 to 6 (1915-17)  
**Primary Maker:** Japanese  
**Medium:** first of four volumes in a clasped chitsu case. String-bound Japanese style in printed paper covers with 28 full page color woodcuts

**Title:** Summer  
**Date:** Taishō 4 to 6 (1915-17)  
**Primary Maker:** Japanese  
**Medium:** second of four volumes in a clasped chitsu case. String-bound Japanese style in printed paper covers with 31 full page color woodcuts



**Title:** Aries  
**Date:** series designed in 2004–2006  
**Primary Maker:** Imamura Yoshio  
**Medium:** etching, engraving, woodcut, chine collé, collagraph, gold, silver, copper and black leaf



**Title:** Scorpio  
**Date:** series designed in 2004–2006  
**Primary Maker:** Imamura Yoshio  
**Medium:** etching, engraving, woodcut, chine collé, collagraph, gold, silver, copper and black leaf



**Title:** Aquarius  
**Date:** series designed in 2004–2006  
**Primary Maker:** Imamura Yoshio  
**Medium:** etching, engraving, woodcut, chine collé, collagraph, gold, silver, copper and black leaf



**Title:** Libra  
**Date:** series designed in 2004–2006  
**Primary Maker:** Imamura Yoshio  
**Medium:** etching, engraving, woodcut, chine collé, collagraph, gold, silver, copper and black leaf





**Title: Capricorn**

**Date:** series designed in 2004–2006

**Primary Maker:** Imamura Yoshio

**Medium:** etching, engraving, woodcut, chine collé, collagraph, gold, silver, copper and black leaf



**Title: Arabesque Planet (Arabesque Wakusei)**

**Date:** 2005

**Primary Maker:** Imamura Yoshio

**Medium:** etching, engraving, woodcut

**Title: Mt. Fuji with Boats in Harbor in foreground**

**Date:** late 18th–mid 19th century

**Primary Maker:** Katsushika Hokusai

**Medium:** color woodcut

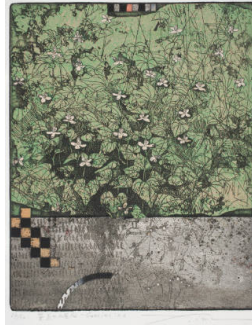


**Title: Pisces**

**Date:** series designed in 2004–2006

**Primary Maker:** Imamura Yoshio

**Medium:** etching, engraving, woodcut, chine collé, collagraph, gold, silver, copper and black leaf



**Title: Gemini**

**Date:** series designed in 2004–2006

**Primary Maker:** Imamura Yoshio

**Medium:** etching, engraving, woodcut, chine collé, collagraph, gold, silver, copper and black leaf



**Title: Cancer**

**Date:** series designed in 2004–2006

**Primary Maker:** Imamura Yoshio

**Medium:** etching, engraving, woodcut, chine collé, collagraph, gold, silver, copper and black leaf



**Title: Taurus**

**Date:** series designed in 2004–2006

**Primary Maker:** Imamura Yoshio

**Medium:** etching, engraving, woodcut, chine collé, collagraph, gold, silver, copper and black leaf



**Title: Sagittarius**

**Date:** series designed in 2004–2006

**Primary Maker:** Imamura Yoshio

**Medium:** etching, engraving, woodcut, chine collé, collagraph, gold, silver, copper and black leaf



**Title: Leo**

**Date:** series designed in 2004–2006

**Primary Maker:** Imamura Yoshio

**Medium:** etching, engraving, woodcut, chine collé, collagraph, gold, silver, copper and black leaf

---

**Title: Virgo**

**Date:** series designed in 2004–2006

**Primary Maker:** Imamura Yoshio

**Medium:** etching, engraving, woodcut, chine collé, collagraph, gold, silver, copper and black leaf



**Title: The Twelve Zodiacal Constellations (Kodo juni seiza)**

**Date:** series designed in 2004–2006

**Primary Maker:** Imamura Yoshio

**Medium:** etching, engraving, woodcut, chine collé, collagraph, gold, silver, copper and black leaf



**Title: Imagine – 31 – A**

**Date:** 1987

**Primary Maker:** Kinoshita, Taika

**Medium:** woodcut



---

**Title: Easter Sunday**

**Date:** 1984

**Primary Maker:** Norine Nishimura

**Medium:** woodcut, handmade paper, chine collé

---

**Title: Analysis**

**Date:** 1987

**Primary Maker:** Norine Nishimura

**Medium:** monoprint, woodcut, collage

---

**Title: Modern Customs in a Comparison of Fifty Pairs of Poems (Tosei fuzoku goju-ban uta-awase)**

**Date:** 1907

**Primary Maker:** Asai, Chu

**Medium:** 2 vols., complete, first edition, original cover titles printed in black on white slips; woodblock printed book, ink and colors on paper



---

**Title: A Fishing Excursion**

**Date:** about 1798

**Primary Maker:** Kitagawa Utamaro I

**Medium:** woodblock print



---

**Title: A Sudden Shower**

**Date:** about 1789

**Primary Maker:** Katsukawa Shunch

**Medium:** woodblock print



---

**Title: A Likening Picture Of Narihira On His Eastern Journey**

**Date:** about 1807

**Primary Maker:** Kitagawa Utamaro II

**Medium:** woodblock print





**Title:** Procession of Women and Children  
**Date:** about 1795  
**Primary Maker:** Kitagawa Utamaro I  
**Medium:** woodblock print



**Title:** A Wakashu and Two Young Women under Cherry Trees on a Flower Viewing Excursion  
**Date:** 11th mont Bunka 3, December 1806  
**Primary Maker:** Kikukawa Eizan  
**Medium:** woodblock print



**Title:** Fanciful Children's Treasure Ship  
**Date:** Ki-no-to ushi saitan, Jan 31, 1805  
**Primary Maker:** Kitagawa Utamaro I  
**Medium:** woodblock print



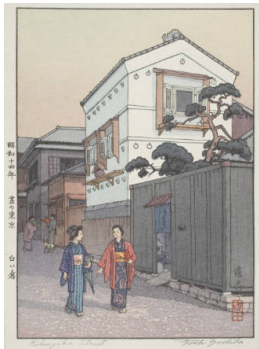
**Title:** Preparation for the Jomi Festival  
**Date:** about 1799  
**Primary Maker:** Utagawa Toyohiro  
**Medium:** woodblock print



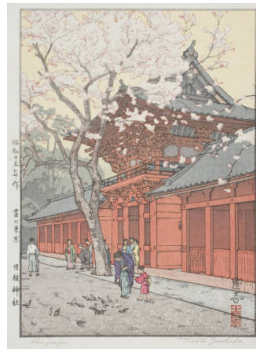
**Title:** The Outing At Seven-Ri Beach  
**Date:** about 1788  
**Primary Maker:** Kitagawa Utamaro I  
**Medium:** woodblock print



**Title:** Picture of a Visit to Yawata on the Bank of the Yodo River  
**Date:** about 1788  
**Primary Maker:** Katsukawa Shunzan  
**Medium:** woodblock print



**Title:** Kikuzaka Street  
**Date:** 1939  
**Primary Maker:** Yoshida, Toshi  
**Medium:** woodblock print, ink and color on paper



**Title:** Hiei Jinja  
**Date:** 1940  
**Primary Maker:** Yoshida, Toshi  
**Medium:** woodblock print, ink and color on paper



**Title:** Umbrella  
**Date:** 1940  
**Primary Maker:** Yoshida, Toshi  
**Medium:** woodblock print, ink and color on paper



**Title:** Pagoda in Kyoto  
**Date:** 1942  
**Primary Maker:** Yoshida, Toshi  
**Medium:** woodblock print, ink and color on paper



**Title:** Tenryu River  
**Date:** 1942  
**Primary Maker:** Yoshida, Toshi  
**Medium:** woodblock print, ink and color on paper



**Title:** The Owada Eel Shop  
**Date:** Hare year 1807  
**Primary Maker:** Katsukawa Shuntei  
**Medium:** multicolored woodblock print; triptych



**Title:** Tiger's Head  
**Date:** 1926  
**Primary Maker:** Yoshida, Toshi  
**Medium:** woodblock print, ink and color on paper



**Title:** Iidabashi  
**Date:** 1939  
**Primary Maker:** Yoshida, Toshi  
**Medium:** woodblock print, ink and color on paper



**Title:** Matsumoto  
**Date:** 1940  
**Primary Maker:** Yoshida, Toshi  
**Medium:** woodblock print, ink and color on paper



**Title:** Linnoji Garden  
**Date:** 1941  
**Primary Maker:** Yoshida, Toshi  
**Medium:** woodblock print, ink and color on paper



**Title:** Sacred Grove  
**Date:** 1941  
**Primary Maker:** Yoshida, Toshi  
**Medium:** woodblock print, ink and color on paper

**Title:** Benkei Bridge  
**Date:** 1941  
**Primary Maker:** Yoshida, Toshi  
**Medium:** woodblock print, ink and color on paper



**Title: Yodo River**

**Date:** 1942

**Primary Maker:** Yoshida, Toshi

**Medium:** woodblock print, ink and color on paper



**Title: Ishiyama Temple**

**Date:** 1946

**Primary Maker:** Yoshida, Toshi

**Medium:** woodblock print, ink and color on paper

**Title: Benkei Bridge at Akasaka (Akasaka Benkeibashi)**

**Date:** 1953

**Primary Maker:** Kasamatsu Shiro

**Medium:** woodblock print, ink and color on paper



**Title: Promenaders on the River Bank**

**Date:** about 1788

**Primary Maker:** Katsukawa Shunzan

**Medium:** woodblock print



**Title: Okaramon**

**Date:** 1940

**Primary Maker:** Yoshida, Toshi

**Medium:** woodblock print, ink and color on paper



**Title: Okaramon**

**Date:** 1940

**Primary Maker:** Yoshida, Toshi

**Medium:** woodblock print, ink and color on paper



**Title: Supper Wagon**

**Date:** 1938

**Primary Maker:** Yoshida, Toshi

**Medium:** woodblock print, ink and color on paper



**Title: Shirasagi Castle**

**Date:** 1942

**Primary Maker:** Yoshida, Toshi

**Medium:** woodblock print, ink and color on paper



**Title: From the Ryogoku Bridge**

**Date:** 1939

**Primary Maker:** Yoshida, Toshi

**Medium:** woodblock print, ink and color on paper





**Title:** Okaramon  
**Date:** 1940  
**Primary Maker:** Yoshida, Toshi  
**Medium:** woodblock print, ink and color on paper



**Title:** Nikko  
**Date:** 1940  
**Primary Maker:** Yoshida, Toshi  
**Medium:** woodblock print, ink and color on paper

**Title:** Half Moon Bridge  
**Date:** 1941  
**Primary Maker:** Yoshida, Toshi  
**Medium:** woodblock print, ink and color on paper



**Title:** Stone Lanterns  
**Date:** 1941  
**Primary Maker:** Yoshida, Toshi  
**Medium:** woodblock print, ink and color on paper



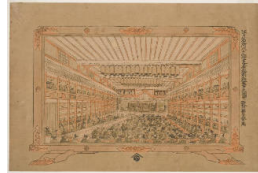
**Title:** Winter  
**Date:** 6th month Bunkwa 4 (July 1807)  
**Primary Maker:** Torii Kiyomine  
**Medium:** Woodblock print



**Title:** Three Fortune Gods Looking At A New Year Color-Print  
**Date:** about 1800  
**Primary Maker:** Katsushika Hokusai  
**Medium:** woodblock print



**Title:** San Gatsu, Shio-Hi and Shi Gatsu, Kameido Fuji  
**Date:** about 1774  
**Primary Maker:** Utagawa Toyoharu  
**Medium:** woodblock print



**Title:** Picture of the Interior of a Theatre  
**Date:** about 1774  
**Primary Maker:** Utagawa Toyoharu  
**Medium:** woodblock print



**Title:** Genji Monogatari Miotsukushi No Maki  
**Date:** about 1843  
**Primary Maker:** Utagawa Kunisada I (Toyokuni III )  
**Medium:** woodblock print



**Title: Soga Ryosha**

**Gosairei**

**Date:** 1788

**Primary Maker:** Kiyonaga, Torii

**Medium:** woodblock print



**Title: Parody of the  
Legend of Mount e**

**Date:** late 1700s–early 1800s

**Primary Maker:** Kitagawa  
Utamaro I

**Medium:** woodblock print; ink  
and color on paper



**Title: A Grape-picking  
Excursion by a Young  
Woman and Attendants**

**Date:** early 1800s

**Primary Maker:** Katsukawa  
Shunsen (Shunk II )

**Medium:** woodblock print; ink  
and color on paper



**Title: Entrance Gate to  
Enoshima in Sagami  
Province (Sagami  
Enoshima iriguchi)**

**Date:** 1858

**Primary Maker:** Utagawa  
Hiroshige I

**Medium:** woodblock print; ink  
and color on paper



**Title: The Inquisitive  
Rooster**

**Date:** about 1769

**Primary Maker:** Suzuki  
Harunobu

**Medium:** woodblock print



**Title: Fair Visitors To  
Futami Beach**

**Date:** about 1804

**Primary Maker:** Kitagawa  
Utamaro I

**Medium:** woodblock print



**Title: Ide No Tamagawa**

**Date:** about 1817

**Primary Maker:** Utagawa  
Toyokuni I

**Medium:** woodblock print



**Title: Kyoto Atagoyama**

**Date:** about 1773

**Primary Maker:** Utagawa  
Toyoharu

**Medium:** woodblock print



**Title: Asaina Performing  
The Oni-Arai Ceremony**

**Date:** 1st month of Bunsei 4,  
Feb. 1821

**Primary Maker:** Utagawa  
Toyohiro

**Medium:** woodblock print

**Title: Collection of Print Masterworks (Meisaku Hangashu)**

**Date:** 1951

**Primary Maker:** Hiratsuka, Un'ichi

**Medium:** Book illustrated with 30 reproductions



**Title: Needlework**

**Date:** 1794-1795

**Primary Maker:** Kitagawa Utamaro I

**Medium:** Woodblock print (nishiki-e); ink and color on paper



**Title: A Noble Lady And Her Retinue Under A Blossoming Cherry Tree**

**Date:** about 1797

**Primary Maker:** Kitagawa Utamaro I

**Medium:** woodblock print



**Title: The Deer Hunter**

**Date:** about 1790

**Primary Maker:** Kitagawa Utamaro I

**Medium:** woodblock print



**Title: Holding Two Mirrors**

**Date:** about 1807

**Primary Maker:** Kitagawa Utamaro II

**Medium:** woodblock print



**Title: Java Sparrow (Buncho)**

**Date:** 1927

**Primary Maker:** Yoshida, Toshi  
**Medium:** woodblock print, ink and color on paper

**Title: On the Night of the 8th of February 1904, our Brave Fleet of Torpedo Boats Fired at the Russian Squadron at Port Arthur and Sank the Enemy's Three Battleships. What a Brilliant Success!**

**Date:** February 1904

**Primary Maker:** Migata Toshihide

**Medium:** multicolor woodblock print; triptych



**Title: A Fanciful Flower Arrangement**

**Date:** about 1790

**Primary Maker:** Kitagawa Utamaro I

**Medium:** woodblock print



**Title: Kabuki Actor in the Role of Hanaoka Bunshichi**

**Date:** 1849–1853

**Primary Maker:** Utagawa Kunisada I (Toyokuni III )

**Medium:** multicolored woodblock print





**Title: Snow Grouse (Raicho)**

**Date:** 1930

**Primary Maker:** Yoshida, Toshi

**Medium:** woodblock print, ink and color on paper



**Title: Shinjuku**

**Date:** 1938

**Primary Maker:** Yoshida, Toshi

**Medium:** woodblock print, ink and color on paper



**Title: Picture of Benzaiten Festival at Itsukushima in the Autumn**

**Date:** about 1773

**Primary Maker:** Utagawa Toyoharu

**Medium:** woodblock print



**Title: Urayasu**

**Date:** 1951

**Primary Maker:** Yoshida, Toshi

**Medium:** woodblock print, ink and color on paper



**Title: White Plum in the Farmyard**

**Date:** 1951

**Primary Maker:** Yoshida, Toshi

**Medium:** woodblock print, ink and color on paper

**Title: Heirinji Temple Bell**

**Date:** 1951

**Primary Maker:** Yoshida, Toshi

**Medium:** woodblock print, ink and color on paper



**Title: Cherry Blossoms by the Gate**

**Date:** 1951

**Primary Maker:** Yoshida, Toshi

**Medium:** woodblock print, ink and color on paper



**Title: Morinji in Spring**

**Date:** 1951

**Primary Maker:** Yoshida, Toshi

**Medium:** woodblock print, ink and color on paper



**Title: Castle at Himeji**

**Date:** 1951

**Primary Maker:** Yoshida, Toshi

**Medium:** woodblock print, ink and color on paper



**Title:** Shrine of the Paper Makers  
**Date:** 1951  
**Primary Maker:** Yoshida, Toshi  
**Medium:** woodblock print, ink and color on paper

**Title:** Silver Pavilion - Kyoto  
**Date:** 1951  
**Primary Maker:** Yoshida, Toshi  
**Medium:** woodblock print, ink and color on paper



**Title:** Rice Fields in Suizu  
**Date:** 1951  
**Primary Maker:** Yoshida, Toshi  
**Medium:** woodblock print, ink and color on paper

**Title:** Tenryu River  
**Date:** 1942  
**Primary Maker:** Yoshida, Toshi  
**Medium:** woodblock print, ink and color on paper



**Title:** Morinji in Spring  
**Date:** 1951  
**Primary Maker:** Yoshida, Toshi  
**Medium:** woodblock print, ink and color on paper



**Title:** Plum Tree and Blue Magpie  
**Date:** 1951  
**Primary Maker:** Yoshida, Toshi  
**Medium:** woodblock print, ink and color on paper



**Title:** Plum Tree and Blue Magpie  
**Date:** 1951  
**Primary Maker:** Yoshida, Toshi  
**Medium:** woodblock print, ink and color on paper



**Title:** Village of Plums  
**Date:** 1951  
**Primary Maker:** Yoshida, Toshi  
**Medium:** woodblock print, ink and color on paper



**Title:** Village in Harima  
**Date:** 1951  
**Primary Maker:** Yoshida, Toshi  
**Medium:** woodblock print, ink and color on paper



**Title:** Hikone Castle in Spring  
**Date:** 1951  
**Primary Maker:** Yoshida, Toshi  
**Medium:** woodblock print, ink and color on paper



**Title:** In a Kyoto Sweet Shop  
**Date:** 1951  
**Primary Maker:** Yoshida, Toshi  
**Medium:** woodblock print, ink and color on paper



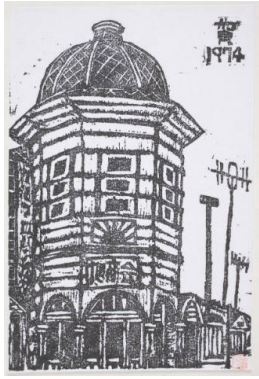
**Title:** Akiba Shrine  
**Date:** 1951  
**Primary Maker:** Yoshida, Toshi  
**Medium:** woodblock print, ink and color on paper

**Title:** Double Cherry (Yaezakura)  
**Date:** 1954  
**Primary Maker:** Kawarazaki Shodo  
**Medium:** woodblock print, ink and color on paper

**Title:** Miyajima in Rain (Ame no Miyajima)  
**Date:** July, Showa 16 (1941)  
**Primary Maker:** Tsuchiya Koitsu  
**Medium:** woodblock print, ink and color on paper

**Title:** Mushrooms  
**Date:** 20th century  
**Primary Maker:** Yamaguchi Seion  
**Medium:** woodblock print, ink on paper





**Title: Conference Center (kaishochi)**

**Date:** 1974

**Primary Maker:** Michiai Masakuni

**Medium:** woodblock print, ink on paper



**Title: Ikebana**

**Date:** 1949

**Primary Maker:** Kasamatsu Shiro

**Medium:** woodblock print, ink and color on paper



**Title: Utagahama in Nikko**

**Date:** late 1920s–early 1930s

**Primary Maker:** Takahashi Hiroaki

**Medium:** woodblock print, ink and color on paper



**Title: Returning from the Bath**

**Date:** 1927–1934

**Primary Maker:** Takahashi Hiroaki

**Medium:** woodblock print, ink and color on paper



**Title: Farm House, Baby in a Cradle and Brazier**

**Date:** about 1950s

**Primary Maker:** Minagawa Taizo

**Medium:** woodblock print, ink and color on paper



**Title: Hills and Rivers Remain after War**

**Date:** n.d.

**Primary Maker:** Japanese

**Medium:** woodblock print, ink and color on paper



**Title:** Farmer with a Straw Raincoat Fixing His Straw Shoes  
**Date:** n.d.  
**Primary Maker:** Japanese  
**Medium:** woodblock print, ink on paper



**Title:** Fan-shape with Design of Heron and Lotus Flowers  
**Date:** n.d.  
**Primary Maker:** Japanese  
**Medium:** woodblock print, ink on paper



**Title:** Illustrated Woodblock Printed Books on a Table, Chrysanthemum and Maple Leaves  
**Date:** n.d.  
**Primary Maker:** Japanese  
**Medium:** woodblock print, ink on paper



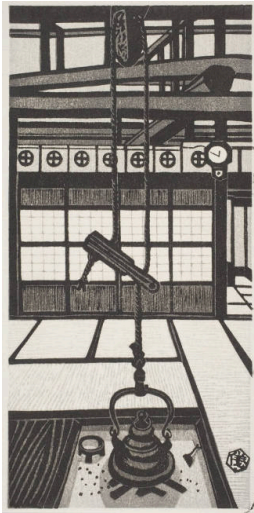
**Title:** Bamboo Shoot, Pine Trees and Cherry Blossoms  
**Date:** n.d.  
**Primary Maker:** Japanese  
**Medium:** woodblock print, ink and color on paper



**Title:** Farm House - Miasa mura  
**Date:** 20th century  
**Primary Maker:** Yoshida, Tsukasa  
**Medium:** woodblock print, ink and color on paper



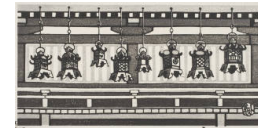
**Title:** View of Garden in Winter  
**Date:** about 1950s  
**Primary Maker:** Okuyama Gihachiro  
**Medium:** woodblock print, ink on paper



**Title:** Hearth (irori) with Hanging Kettle (tetsubin) in a Farm House  
**Date:** about 1950s  
**Primary Maker:** Okuyama Gihachiro  
**Medium:** woodblock print, ink on paper



**Title:** Family Walking Home in the Winter  
**Date:** about 1950s  
**Primary Maker:** Okuyama Gihachiro  
**Medium:** woodblock print, ink on paper



**Title:** Temple Lanterns  
**Date:** about 1950s  
**Primary Maker:** Okuyama Gihachiro  
**Medium:** woodblock print, ink on paper



**Title:** Farm House in Shinto  
**Date:** n.d.  
**Primary Maker:** Kozakai Misao  
**Medium:** woodblock print, ink and color on paper



**Title:** Aizu Misoten  
**Date:** after 1950  
**Primary Maker:** Kozakai Misao  
**Medium:** woodblock print, ink and color on paper



**Title:** White Heron  
**Date:** about 1925–1930  
**Primary Maker:** Ito, Sozan  
**Medium:** woodblock print, ink and color on paper





**Title: Spring Evening**

**Date:** 1924–1927

**Primary Maker:** Takahashi Hiroaki

**Medium:** woodblock print, ink and color on paper



**Title: Katsushika**

**Date:** late 1920s–early 1930s

**Primary Maker:** Takahashi Hiroaki

**Medium:** woodblock print, ink and color on paper



**Title: Daimonji**

**Date:** about 1950s

**Primary Maker:** Minagawa Taizo

**Medium:** woodblock print, ink and color on paper



**Title: Maple**

**Date:** 1970

**Primary Maker:** Yoshida, Tsukasa

**Medium:** woodblock print, ink and color on paper



**Title: Kanchenjanga in the Morning**

**Date:** designed in 1931, posthumous printing

**Primary Maker:** Yoshida, Hiroshi

**Medium:** woodblock print, ink and color on paper



**Title: Kinkaku Temple**

**Date:** designed in 1933, printed later

**Primary Maker:** Yoshida, Hiroshi

**Medium:** woodblock print, ink and color on paper



**Title:** Evening in Shitada  
**Date:** 1943  
**Primary Maker:** Okuyama Gihachiro  
**Medium:** woodblock print, ink on paper



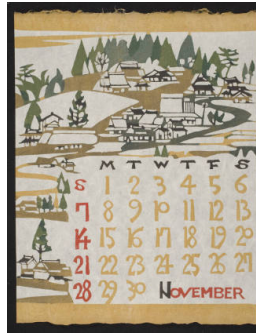
**Title:** Sangetsudo  
**Date:** n.d.  
**Primary Maker:** Kozakai Misao  
**Medium:** woodblock print, ink and color on paper



**Title:** Hisataya  
**Date:** n.d.  
**Primary Maker:** Kozakai Misao  
**Medium:** woodblock print, ink and color on paper



**Title:** May, 1971 – Pond with Irises and Water Lilies  
**Date:** 1970  
**Primary Maker:** Nishijima, Takeshi  
**Medium:** hand stencil-dyed print, ink and color on handmade kozo paper



**Title:** November - Calendar 1971  
**Date:** 1970  
**Primary Maker:** Nishijima, Takeshi  
**Medium:** set of twelve hand stencil-dyed prints, ink and color on handmade kozo paper



**Title:** December, 1971 – Interior View to Winter Garden  
**Date:** 1970  
**Primary Maker:** Nishijima, Takeshi  
**Medium:** hand stencil-dyed print, ink and color on handmade kozo paper



**Title:** February, 1972 – Lantern for the Mandoro Festival at Kasuga Shrine in Nara  
**Date:** 1971  
**Primary Maker:** Nishijima, Takeshi  
**Medium:** hand stencil-dyed print, ink and color on handmade kozo paper



**Title:** March, 1972 – Cyclamen  
**Date:** 1971  
**Primary Maker:** Nishijima, Takeshi  
**Medium:** hand stencil-dyed print, ink and color on handmade kozo paper



**Title:** October, 1972 – Thistles  
**Date:** 1971  
**Primary Maker:** Nishijima, Takeshi  
**Medium:** hand stencil-dyed print, ink and color on handmade kozo paper



**Title: November -  
Calendar 1972**

**Date:** 1971

**Primary Maker:** Nishijima,  
Takeshi

**Medium:** hand stencil-dyed  
prints, ink and color on  
handmade kozo paper



**Title: December -  
Calendar 1972**

**Date:** 1971

**Primary Maker:** Nishijima,  
Takeshi

**Medium:** hand stencil-dyed  
prints, ink and color on  
handmade kozo paper



**Title: Autumn in Hakone  
Museum**

**Date:** 1954

**Primary Maker:** Yoshida, Toshi  
**Medium:** woodblock print, ink  
and color on paper

**Title: Myoko Hot Spring**

**Date:** 1955

**Primary Maker:** Yoshida, Toshi

**Medium:** woodblock print, ink  
and color on paper



**Title: Myoko Hot Spring**

**Date:** 1955

**Primary Maker:** Yoshida, Toshi

**Medium:** woodblock print, ink  
and color on paper

**Title: Snow Country**

**Date:** 1955

**Primary Maker:** Yoshida, Toshi

**Medium:** woodblock print, ink  
and color on paper



**Title: Mt. Fuji from Ohito,  
Autumn**

**Date:** designed in 1962,  
printed in 1983

**Primary Maker:** Yoshida, Toshi

**Medium:** woodblock print, ink  
and color on paper



**Title: Tenryu-ji Garden**

**Date:** 1963

**Primary Maker:** Yoshida, Toshi

**Medium:** woodblock print, ink  
and color on paper



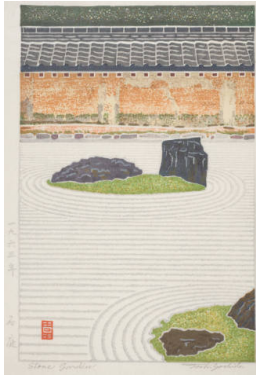
**Title: Ginkaku-ji Garden**

**Date:** 1963

**Primary Maker:** Yoshida, Toshi

**Medium:** woodblock print, ink  
and color on paper





**Title: Stone Garden**  
**Date:** 1963  
**Primary Maker:** Yoshida, Toshi  
**Medium:** woodblock print, ink and color on paper; self-carved



**Title: Tea-ceremony Room, Pond and Stone Bridge**  
**Date:** designed in 1964, late-life printing  
**Primary Maker:** Yoshida, Toshi  
**Medium:** woodblock print, ink and color on paper



**Title: Snow and Stone Lanterns**  
**Date:** 1965  
**Primary Maker:** Yoshida, Toshi  
**Medium:** woodblock print, ink and color on paper



**Title: Mt. Holy Cross, Vail, Colorado**  
**Date:** 1966  
**Primary Maker:** Yoshida, Toshi  
**Medium:** woodblock print, ink and color on paper



**Title: Waterfall**  
**Date:** 1970  
**Primary Maker:** Yoshida, Toshi  
**Medium:** woodblock print, ink and color on paper



**Title: Kueilin**  
**Date:** 1980  
**Primary Maker:** Yoshida, Toshi  
**Medium:** woodblock print, ink and color on paper

**Title: Japanese Antelopes in Snow**  
**Date:** 1981  
**Primary Maker:** Yoshida, Toshi  
**Medium:** woodblock print, ink and color on paper



**Title: Mountains of Himalaya**  
**Date:** 1982  
**Primary Maker:** Yoshida, Toshi  
**Medium:** woodblock print, ink and color on paper



**Title: Kilimanjaro, Evening**  
**Date:** 1983  
**Primary Maker:** Yoshida, Toshi  
**Medium:** woodblock print, ink and color on paper



**Title: Kilimanjaro,  
Cloudy Day**

**Date:** 20th century

**Primary Maker:** Yoshida, Toshi

**Medium:** woodblock print, ink  
and color on paper

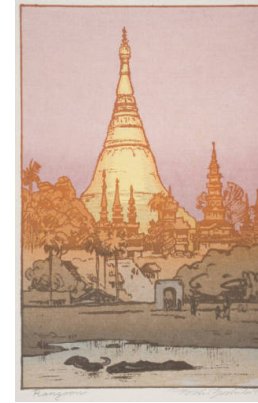


**Title: Madurai**

**Date:** 1984

**Primary Maker:** Yoshida, Toshi

**Medium:** woodblock print, ink  
and color on paper



**Title: Rangoon**

**Date:** 1984

**Primary Maker:** Yoshida, Toshi

**Medium:** woodblock print, ink  
and color on paper



**Title: Tsubakurodake,  
Morning**

**Date:** designed in 1951,  
printed in 1984

**Primary Maker:** Yoshida, Toshi

**Medium:** woodblock print, ink  
and color on paper

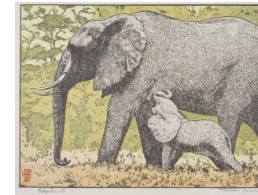


**Title: Tsubakurodake,  
Evening**

**Date:** designed in 1951,  
printed in 1984

**Primary Maker:** Yoshida, Toshi

**Medium:** woodblock print, ink  
and color on paper

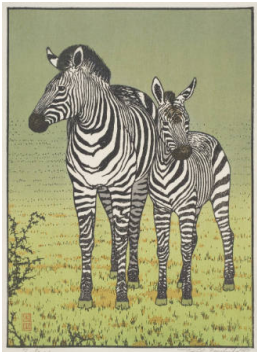


**Title: Elephants**

**Date:** 1987

**Primary Maker:** Yoshida, Toshi

**Medium:** woodblock print, ink  
and color on paper



**Title: Zebras**

**Date:** 1987

**Primary Maker:** Yoshida, Toshi

**Medium:** woodblock print, ink  
and color on paper

**Title: Lion**

**Date:** 1987

**Primary Maker:** Yoshida, Toshi

**Medium:** color woodblock print  
on paper

**Title: Rhinoceros**

**Date:** 1987

**Primary Maker:** Yoshida, Toshi

**Medium:** woodblock print, ink  
and color on paper

**Title: Morning Mist in East Africa**

**Date:** 1991

**Primary Maker:** Yoshida, Toshi

**Medium:** woodblock print, ink and color on paper

**Title: One day in East Africa no. 6**

**Date:** designed in 1982, printed in 1995

**Primary Maker:** Yoshida, Toshi

**Medium:** woodblock print, ink and color on paper



**Title: Hayaharu Azumino; Azumino in Early Spring**

**Date:** 1989

**Primary Maker:** Yoshida, Toshi

**Medium:** woodblock print, ink and color on paper

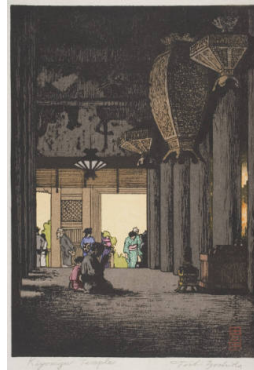


**Title: Hayaharu Azumino; Azumino in Early Spring**

**Date:** 1989

**Primary Maker:** Yoshida, Toshi

**Medium:** woodblock print, ink and color on paper



**Title: Kiyomizu Temple**

**Date:** after 1995

**Primary Maker:** Yoshida, Toshi

**Medium:** woodblock print, ink and color on paper



**Title: Girl Playing Hanetsuki Game**

**Date:** about 1950s

**Primary Maker:** Hasegawa Sadanobu III

**Medium:** woodblock print, ink and color on paper



**Title: Dancing Girl**

**Date:** about 1950s

**Primary Maker:** Hasegawa Sadanobu III

**Medium:** woodblock print, ink and color on paper



**Title: Girl Washing Hands**

**Date:** about 1950s

**Primary Maker:** Hasegawa Sadanobu III

**Medium:** woodblock print, ink and color on paper



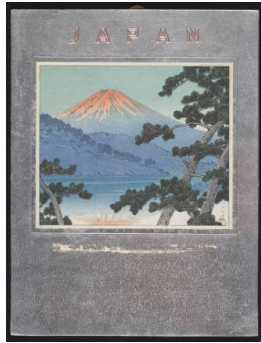
**Title: Moon over Izura, Ibaraki (Izura no tsuki)**

**Date:** 1952

**Primary Maker:** Kawase Hasui

**Medium:** woodblock print, ink and color on paper

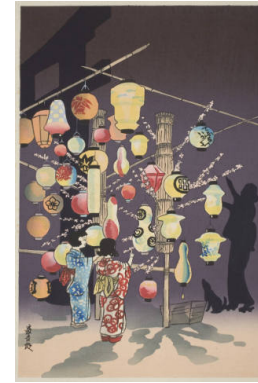




**Title:** Dawn over Lake Shoji  
**Date:** 1935  
**Primary Maker:** Kawase Hasui  
**Medium:** woodblock print, ink and color on paper



**Title:** Fuji from Lake Yamanaka (Fuyu no Yamanaka Mizuumi)  
**Date:** probably printed in the 1940s–50s  
**Primary Maker:** Tokuriki Tomikichiro  
**Medium:** woodblock print, ink and color on paper



**Title:** Lanterns  
**Date:** 20th century  
**Primary Maker:** Tokuriki Tomikichiro  
**Medium:** woodblock print, ink and color on paper

**Title:** Uwanari  
**Date:** 1952  
**Primary Maker:** Ueno (Torii) Tadamasa  
**Medium:** woodblock print, ink and color on paper



**Title:** Sumiyoshi Shrine  
**Date:** 20th century  
**Primary Maker:** Tokuriki Tomikichiro  
**Medium:** woodblock print, ink and color on paper

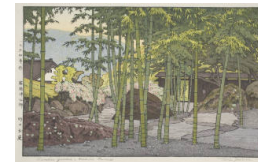
**Title:** Miyazu, Tango (Tango no Miyazu)  
**Date:** January 17, 1921  
**Primary Maker:** Kawase Hasui  
**Medium:** woodblock print, ink and color on paper



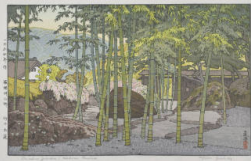
**Title:** Wisteria at Ushijima  
**Date:** 1953  
**Primary Maker:** Yoshida, Toshi  
**Medium:** woodblock print, ink and color on paper



**Title:** Sangetsu-an Hakone Museum  
**Date:** 1954  
**Primary Maker:** Yoshida, Toshi  
**Medium:** woodblock print, ink and color on paper



**Title:** Bamboo Garden, Hakone Museum  
**Date:** 1954  
**Primary Maker:** Yoshida, Toshi  
**Medium:** woodblock print, ink and color on paper



**Title:** Bamboo Garden, Hakone Museum  
**Date:** 1954  
**Primary Maker:** Yoshida, Toshi  
**Medium:** woodblock print, ink and color on paper



**Title:** Sunrise on New Year's Day in Ginza (Ginza no hatsuhi no de)  
**Date:** 1958  
**Primary Maker:** Yoshida, Toshi  
**Medium:** woodblock print, ink and color on paper



**Title:** Irozaki, Morning  
**Date:** 1961  
**Primary Maker:** Yoshida, Toshi  
**Medium:** woodblock print, ink and color on paper



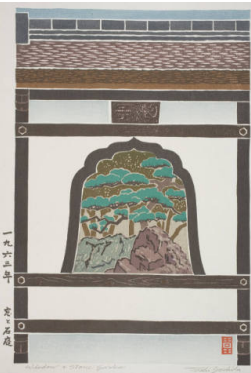
**Title:** Irozaki, Day  
**Date:** 1961  
**Primary Maker:** Yoshida, Toshi  
**Medium:** woodblock print, ink and color on paper



**Title:** Irozaki, Afternoon  
**Date:** 1961  
**Primary Maker:** Yoshida, Toshi  
**Medium:** woodblock print, ink and color on paper



**Title:** Mt. Fuji from Ohito, Morning  
**Date:** 1962  
**Primary Maker:** Yoshida, Toshi  
**Medium:** woodblock print, ink and color on paper



**Title:** Window and Stone Garden  
**Date:** 1963  
**Primary Maker:** Yoshida, Toshi  
**Medium:** woodblock print, ink and color on paper



**Title:** Two Lanterns  
**Date:** 1964  
**Primary Maker:** Yoshida, Toshi  
**Medium:** woodblock print, ink and color on paper



**Title:** Lantern and Maples  
**Date:** 1964  
**Primary Maker:** Yoshida, Toshi  
**Medium:** woodblock print, ink and color on paper; self-carved



**Title: White Wall**

**Date:** 1964

**Primary Maker:** Yoshida, Toshi

**Medium:** woodblock print, ink and color on paper



**Title: Cherry Blossoms**

**Date:** 1970

**Primary Maker:** Yoshida, Toshi

**Medium:** woodblock print, ink and color on paper



**Title: Monument Valley**

**Date:** 1971

**Primary Maker:** Yoshida, Toshi

**Medium:** woodblock print, ink and color on paper



**Title: Mt. Rainer in Winter**

**Date:** 1972

**Primary Maker:** Yoshida, Toshi

**Medium:** woodblock print, ink and color on paper



**Title: Evening in East Africa**

**Date:** 1977

**Primary Maker:** Yoshida, Toshi

**Medium:** woodblock print, ink and color on paper



**Title: From Katsuragi-yama**

**Date:** 1983

**Primary Maker:** Yoshida, Toshi

**Medium:** woodblock print, ink and color on paper



**Title: From Katsuragi-yama**

**Date:** 1983

**Primary Maker:** Yoshida, Toshi

**Medium:** woodblock print, ink and color on paper



**Title: Daisetsuzan**

**Date:** designed in 1930,  
printed in 1984

**Primary Maker:** Yoshida, Toshi

**Medium:** woodblock print, ink and color on paper



**Title: Tiruchchirappalli**

**Date:** 1984

**Primary Maker:** Yoshida, Toshi

**Medium:** woodblock print, ink and color on paper





**Title: Hyoroku**

**Date:** designed in 1951,  
printed in 1985

**Primary Maker:** Yoshida, Toshi

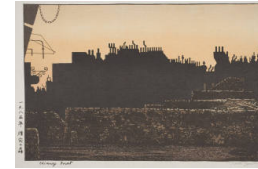
**Medium:** woodblock print, ink  
and color on paper

**Title: San Francisco**

**Date:** 1985

**Primary Maker:** Yoshida, Toshi

**Medium:** woodblock print, ink  
and color on paper



**Title: Chimney Forest**

**Date:** 1985

**Primary Maker:** Yoshida, Toshi

**Medium:** woodblock print, ink  
and color on paper



**Title: Havana in 1954**

**Date:** 1985

**Primary Maker:** Yoshida, Toshi

**Medium:** woodblock print, ink  
and color on paper



**Title: Black Panther**

**Date:** 1987

**Primary Maker:** Yoshida, Toshi

**Medium:** color woodblock  
print, ink and color on paper

**Title: Mt. Fuji from  
Gotenba**

**Date:** 1987

**Primary Maker:** Yoshida, Toshi

**Medium:** woodblock print, ink  
and color on paper

**Title: Tancho Crane**

**Date:** 1988

**Primary Maker:** Yoshida, Toshi

**Medium:** woodblock print, ink  
and color on paper

**Title: One day in East  
Africa no. 3**

**Date:** designed in 1981,  
printed in 1991

**Primary Maker:** Yoshida, Toshi

**Medium:** woodblock print, ink  
and color on paper



**Title: Dance of Eternal  
Love**

**Date:** 1994

**Primary Maker:** Yoshida, Toshi

**Medium:** woodblock print, ink  
and color on paper



**Title:** Flower Arrangement  
**Date:** about 1950s  
**Primary Maker:** Hasegawa Sadanobu III  
**Medium:** woodblock print, ink and color on paper



**Title:** Soba Restaurant on a Rainy Night  
**Date:** 1951  
**Primary Maker:** Tokuriki Tomikichiro  
**Medium:** woodblock print, ink and color on paper

**Title:** Sukeroku  
**Date:** 1952  
**Primary Maker:** Ueno (Torii) Tadamasa  
**Medium:** woodblock print, ink and color on paper



**Title:** Interval of Clear Weather (Harema)  
**Date:** about 1970s  
**Primary Maker:** Nishijima Katsuyuki  
**Medium:** woodblock print, ink and color on paper



**Title:** Spring Meal  
**Date:** 20th century  
**Primary Maker:** Nishijima Katsuyuki  
**Medium:** woodblock print, ink and color on paper



**Title:** Sunny Fruits  
**Date:** 1969  
**Primary Maker:** Akiko, Shirai  
**Medium:** woodblock print, ink and color on paper

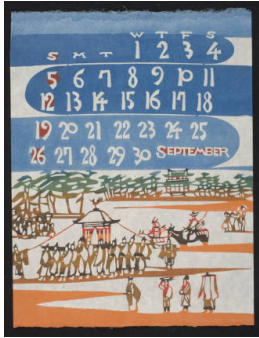


**Title:** The Little White Plum Tree  
**Date:** about 1928–1930s  
**Primary Maker:** Lilian Miller  
**Medium:** woodblock print, ink and color on paper

**Title:** The Jidai Festival Procession in Kyoto  
**Date:** about 1959  
**Primary Maker:** Inagaki, Toshijiro  
**Medium:** stencil-dyed paper



**Title:** July, 1971 – Round Fan with Sweet Pea Design  
**Date:** 1970  
**Primary Maker:** Nishijima, Takeshi  
**Medium:** hand stencil-dyed print, ink and color on handmade kozo paper



**Title: September, 1971 – Procession at the Tsurugaoka Hachiman Shrine**

**Date:** 1970

**Primary Maker:** Nishijima, Takeshi

**Medium:** hand stencil-dyed print, ink and color on handmade kozo paper



**Title: October, 1971 – Tiger Lily**

**Date:** 1970

**Primary Maker:** Nishijima, Takeshi

**Medium:** hand stencil-dyed print, ink and color on handmade kozo paper



**Title: January, 1972 – The Heian Shrine in Kyoto**

**Date:** 1971

**Primary Maker:** Nishijima, Takeshi

**Medium:** hand stencil-dyed print, ink and color on handmade kozo paper



**Title: August - Calendar 1972**

**Date:** 1971

**Primary Maker:** Nishijima, Takeshi

**Medium:** hand stencil-dyed prints, ink and color on handmade kozo paper



**Title: September, 1972 – Moon Reflected in the Pond at Daikaku Temple, Kyoto**

**Date:** 1971

**Primary Maker:** Nishijima, Takeshi

**Medium:** hand stencil-dyed prints, ink and color on handmade kozo paper



**Title: Reptiles And Insects**

**Date:** about 1850

**Primary Maker:** Utagawa Sadahide

**Medium:** woodblock print



**Title: Picture of a Visit to Enoshima in Soshu**

**Date:** 4th month ox year, 1853

**Primary Maker:** Utagawa Hiroshige II (Shigenobu)

**Medium:** woodblock print



**Title: Perspective Picture of Cooling-Off in the Evening at Ryogoku**

**Date:** about 1773

**Primary Maker:** Utagawa Toyoharu

**Medium:** woodblock print



**Title: Perspective Picture of the Great Kagura Ceremony at Ise**

**Date:** about 1773

**Primary Maker:** Utagawa Toyoharu

**Medium:** woodblock print





**Title:** Picture Of The Pleasures Of The Taiko And His Five Wives At Rakuto

**Date:** about 1804

**Primary Maker:** Kitagawa Utamaro I

**Medium:** woodblock print



**Title:** The Third Month

**Date:** about 1800

**Primary Maker:** Utagawa Toyohiro

**Medium:** woodblock print



**Title:** Hawking Near Mt. Fuji

**Date:** about 1800

**Primary Maker:** Kitagawa Utamaro I

**Medium:** woodblock print

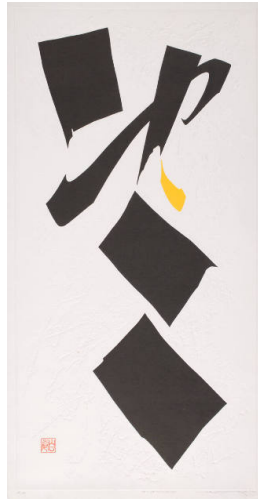


**Title:** 76-11 (Wind – D)

**Date:** 1976

**Primary Maker:** Maki Haku

**Medium:** wood and cement block relief print on paper



**Title:** 76-15 (Cloud – C)

**Date:** 1976

**Primary Maker:** Maki Haku

**Medium:** wood and cement block relief print on paper