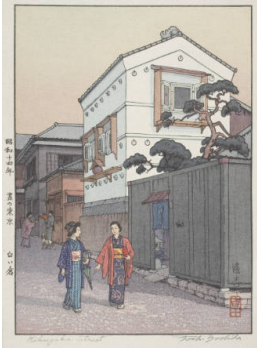
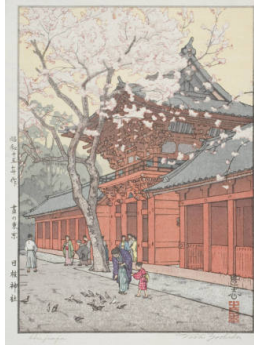


Basic Report



Title: Kikuzaka Street
Date: 1939
Primary Maker: Yoshida, Toshi
Medium: woodblock print, ink and color on paper



Title: Hiei Jinja
Date: 1940
Primary Maker: Yoshida, Toshi
Medium: woodblock print, ink and color on paper



Title: Umbrella
Date: 1940
Primary Maker: Yoshida, Toshi
Medium: woodblock print, ink and color on paper



Title: Pagoda in Kyoto
Date: 1942
Primary Maker: Yoshida, Toshi
Medium: woodblock print, ink and color on paper



Title: Tenryu River
Date: 1942
Primary Maker: Yoshida, Toshi
Medium: woodblock print, ink and color on paper



Title: Tiger's Head
Date: 1926
Primary Maker: Yoshida, Toshi
Medium: woodblock print, ink and color on paper



Title: Iidabashi
Date: 1939
Primary Maker: Yoshida, Toshi
Medium: woodblock print, ink and color on paper



Title: Matsumoto
Date: 1940
Primary Maker: Yoshida, Toshi
Medium: woodblock print, ink and color on paper



Title: Linnoji Garden
Date: 1941
Primary Maker: Yoshida, Toshi
Medium: woodblock print, ink and color on paper



Title: Sacred Grove
Date: 1941
Primary Maker: Yoshida, Toshi
Medium: woodblock print, ink and color on paper

Title: Benkei Bridge
Date: 1941
Primary Maker: Yoshida, Toshi
Medium: woodblock print, ink and color on paper



Title: Yodo River
Date: 1942
Primary Maker: Yoshida, Toshi
Medium: woodblock print, ink and color on paper



Title: Ishiyama Temple
Date: 1946
Primary Maker: Yoshida, Toshi
Medium: woodblock print, ink and color on paper



Title: Okaramon
Date: 1940
Primary Maker: Yoshida, Toshi
Medium: woodblock print, ink and color on paper



Title: Okaramon
Date: 1940
Primary Maker: Yoshida, Toshi
Medium: woodblock print, ink and color on paper



Title: Supper Wagon
Date: 1938
Primary Maker: Yoshida, Toshi
Medium: woodblock print, ink and color on paper



Title: Shirasagi Castle
Date: 1942
Primary Maker: Yoshida, Toshi
Medium: woodblock print, ink and color on paper



Title: From the Ryogoku Bridge
Date: 1939
Primary Maker: Yoshida, Toshi
Medium: woodblock print, ink and color on paper



Title: Okaramon
Date: 1940
Primary Maker: Yoshida, Toshi
Medium: woodblock print, ink and color on paper



Title: Nikko
Date: 1940
Primary Maker: Yoshida, Toshi
Medium: woodblock print, ink and color on paper

Title: Half Moon Bridge
Date: 1941
Primary Maker: Yoshida, Toshi
Medium: woodblock print, ink and color on paper



Title: Stone Lanterns
Date: 1941
Primary Maker: Yoshida, Toshi
Medium: woodblock print, ink and color on paper



Title: Java Sparrow (Buncho)
Date: 1927
Primary Maker: Yoshida, Toshi
Medium: woodblock print, ink and color on paper



Title: Snow Grouse (Raicho)
Date: 1930
Primary Maker: Yoshida, Toshi
Medium: woodblock print, ink and color on paper



Title: Shinjuku
Date: 1938
Primary Maker: Yoshida, Toshi
Medium: woodblock print, ink and color on paper



Title: Urayasu
Date: 1951
Primary Maker: Yoshida, Toshi
Medium: woodblock print, ink and color on paper



Title: White Plum in the Farmyard
Date: 1951
Primary Maker: Yoshida, Toshi
Medium: woodblock print, ink and color on paper

Title: Heirinji Temple Bell

Date: 1951

Primary Maker: Yoshida, Toshi

Medium: woodblock print, ink and color on paper



Title: Cherry Blossoms by the Gate

Date: 1951

Primary Maker: Yoshida, Toshi

Medium: woodblock print, ink and color on paper



Title: Morinji in Spring

Date: 1951

Primary Maker: Yoshida, Toshi

Medium: woodblock print, ink and color on paper



Title: Castle at Himeji

Date: 1951

Primary Maker: Yoshida, Toshi

Medium: woodblock print, ink and color on paper



Title: Shrine of the Paper Makers

Date: 1951

Primary Maker: Yoshida, Toshi

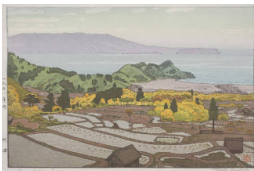
Medium: woodblock print, ink and color on paper

Title: Silver Pavilion - Kyoto

Date: 1951

Primary Maker: Yoshida, Toshi

Medium: woodblock print, ink and color on paper



Title: Rice Fields in Suizu

Date: 1951

Primary Maker: Yoshida, Toshi

Medium: woodblock print, ink and color on paper

Title: Tenryu River

Date: 1942

Primary Maker: Yoshida, Toshi

Medium: woodblock print, ink and color on paper



Title: Morinji in Spring

Date: 1951

Primary Maker: Yoshida, Toshi

Medium: woodblock print, ink and color on paper



Title: Plum Tree and Blue Magpie

Date: 1951

Primary Maker: Yoshida, Toshi

Medium: woodblock print, ink and color on paper



Title: Plum Tree and Blue Magpie

Date: 1951

Primary Maker: Yoshida, Toshi

Medium: woodblock print, ink and color on paper



Title: Village of Plums

Date: 1951

Primary Maker: Yoshida, Toshi

Medium: woodblock print, ink and color on paper



Title: Village in Harima

Date: 1951

Primary Maker: Yoshida, Toshi

Medium: woodblock print, ink and color on paper



Title: Hikone Castle in Spring

Date: 1951

Primary Maker: Yoshida, Toshi

Medium: woodblock print, ink and color on paper



Title: In a Kyoto Sweet Shop

Date: 1951

Primary Maker: Yoshida, Toshi

Medium: woodblock print, ink and color on paper



Title: Akiba Shrine

Date: 1951

Primary Maker: Yoshida, Toshi

Medium: woodblock print, ink and color on paper



Title: Autumn in Hakone Museum

Date: 1954

Primary Maker: Yoshida, Toshi

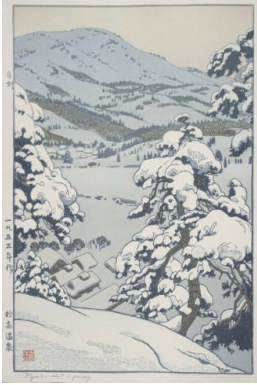
Medium: woodblock print, ink and color on paper

Title: Myoko Hot Spring

Date: 1955

Primary Maker: Yoshida, Toshi

Medium: woodblock print, ink and color on paper



Title: Myoko Hot Spring
Date: 1955
Primary Maker: Yoshida, Toshi
Medium: woodblock print, ink and color on paper

Title: Snow Country
Date: 1955
Primary Maker: Yoshida, Toshi
Medium: woodblock print, ink and color on paper



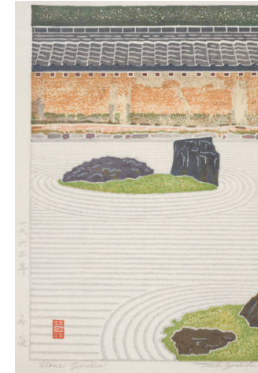
Title: Mt. Fuji from Ohito, Autumn
Date: designed in 1962, printed in 1983
Primary Maker: Yoshida, Toshi
Medium: woodblock print, ink and color on paper



Title: Tenryu-ji Garden
Date: 1963
Primary Maker: Yoshida, Toshi
Medium: woodblock print, ink and color on paper



Title: Ginkaku-ji Garden
Date: 1963
Primary Maker: Yoshida, Toshi
Medium: woodblock print, ink and color on paper



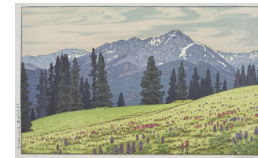
Title: Stone Garden
Date: 1963
Primary Maker: Yoshida, Toshi
Medium: woodblock print, ink and color on paper; self-carved



Title: Tea-ceremony Room, Pond and Stone Bridge
Date: designed in 1964, late-life printing
Primary Maker: Yoshida, Toshi
Medium: woodblock print, ink and color on paper



Title: Snow and Stone Lanterns
Date: 1965
Primary Maker: Yoshida, Toshi
Medium: woodblock print, ink and color on paper



Title: Mt. Holy Cross, Vail, Colorado
Date: 1966
Primary Maker: Yoshida, Toshi
Medium: woodblock print, ink and color on paper



Title: Waterfall

Date: 1970

Primary Maker: Yoshida, Toshi

Medium: woodblock print, ink and color on paper



Title: Kueilin

Date: 1980

Primary Maker: Yoshida, Toshi

Medium: woodblock print, ink and color on paper

Title: Japanese Antelopes in Snow

Date: 1981

Primary Maker: Yoshida, Toshi

Medium: woodblock print, ink and color on paper



Title: Mountains of Himalaya

Date: 1982

Primary Maker: Yoshida, Toshi

Medium: woodblock print, ink and color on paper



Title: Kilimanjaro, Evening

Date: 1983

Primary Maker: Yoshida, Toshi

Medium: woodblock print, ink and color on paper



Title: Kilimanjaro, Cloudy Day

Date: 20th century

Primary Maker: Yoshida, Toshi

Medium: woodblock print, ink and color on paper

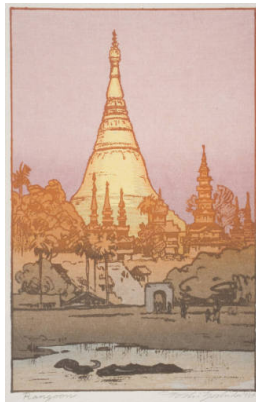


Title: Madurai

Date: 1984

Primary Maker: Yoshida, Toshi

Medium: woodblock print, ink and color on paper



Title: Rangoon

Date: 1984

Primary Maker: Yoshida, Toshi

Medium: woodblock print, ink and color on paper



Title: Tsubakurodake, Morning

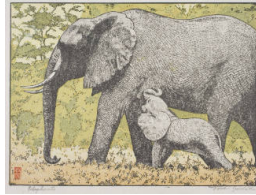
Date: designed in 1951, printed in 1984

Primary Maker: Yoshida, Toshi

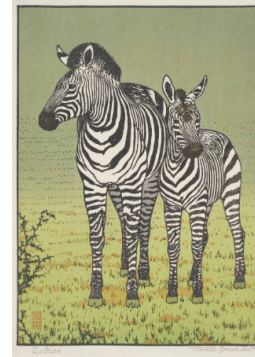
Medium: woodblock print, ink and color on paper



Title: Tsubakurodake, Evening
Date: designed in 1951, printed in 1984
Primary Maker: Yoshida, Toshi
Medium: woodblock print, ink and color on paper



Title: Elephants
Date: 1987
Primary Maker: Yoshida, Toshi
Medium: woodblock print, ink and color on paper



Title: Zebras
Date: 1987
Primary Maker: Yoshida, Toshi
Medium: woodblock print, ink and color on paper

Title: Lion
Date: 1987
Primary Maker: Yoshida, Toshi
Medium: color woodblock print on paper

Title: Rhinoceros
Date: 1987
Primary Maker: Yoshida, Toshi
Medium: woodblock print, ink and color on paper

Title: Morning Mist in East Africa
Date: 1991
Primary Maker: Yoshida, Toshi
Medium: woodblock print, ink and color on paper

Title: One day in East Africa no. 6
Date: designed in 1982, printed in 1995
Primary Maker: Yoshida, Toshi
Medium: woodblock print, ink and color on paper



Title: Hayaharu Azumino; Azumino in Early Spring
Date: 1989
Primary Maker: Yoshida, Toshi
Medium: woodblock print, ink and color on paper



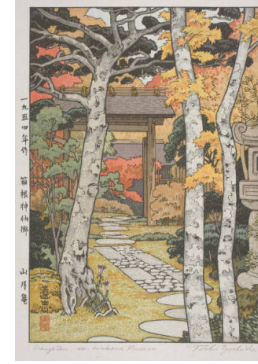
Title: Hayaharu Azumino; Azumino in Early Spring
Date: 1989
Primary Maker: Yoshida, Toshi
Medium: woodblock print, ink and color on paper



Title: Kiyomizu Temple
Date: after 1995
Primary Maker: Yoshida, Toshi
Medium: woodblock print, ink and color on paper



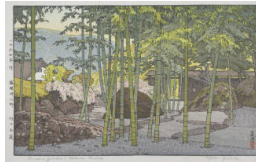
Title: Wisteria at Ushijima
Date: 1953
Primary Maker: Yoshida, Toshi
Medium: woodblock print, ink and color on paper



Title: Sangetsu-an Hakone Museum
Date: 1954
Primary Maker: Yoshida, Toshi
Medium: woodblock print, ink and color on paper



Title: Bamboo Garden, Hakone Museum
Date: 1954
Primary Maker: Yoshida, Toshi
Medium: woodblock print, ink and color on paper



Title: Bamboo Garden, Hakone Museum
Date: 1954
Primary Maker: Yoshida, Toshi
Medium: woodblock print, ink and color on paper



Title: Sunrise on New Year's Day in Ginza (Ginza no hatsuhi no de)
Date: 1958
Primary Maker: Yoshida, Toshi
Medium: woodblock print, ink and color on paper



Title: Irozaki, Morning
Date: 1961
Primary Maker: Yoshida, Toshi
Medium: woodblock print, ink and color on paper



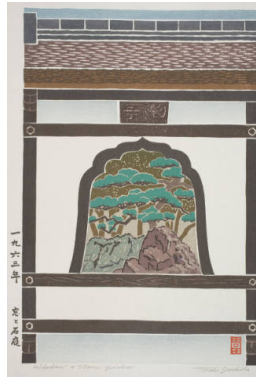
Title: Irozaki, Day
Date: 1961
Primary Maker: Yoshida, Toshi
Medium: woodblock print, ink and color on paper



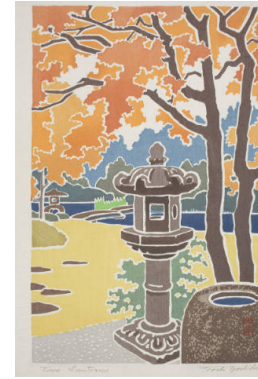
Title: Irozaki, Afternoon
Date: 1961
Primary Maker: Yoshida, Toshi
Medium: woodblock print, ink and color on paper



Title: Mt. Fuji from Ohito, Morning
Date: 1962
Primary Maker: Yoshida, Toshi
Medium: woodblock print, ink and color on paper



Title: Window and Stone Garden
Date: 1963
Primary Maker: Yoshida, Toshi
Medium: woodblock print, ink and color on paper



Title: Two Lanterns
Date: 1964
Primary Maker: Yoshida, Toshi
Medium: woodblock print, ink and color on paper



Title: Lantern and Maples
Date: 1964
Primary Maker: Yoshida, Toshi
Medium: woodblock print, ink and color on paper; self-carved



Title: White Wall
Date: 1964
Primary Maker: Yoshida, Toshi
Medium: woodblock print, ink and color on paper



Title: Cherry Blossoms
Date: 1970
Primary Maker: Yoshida, Toshi
Medium: woodblock print, ink and color on paper



Title: Monument Valley
Date: 1971
Primary Maker: Yoshida, Toshi
Medium: woodblock print, ink and color on paper



Title: Mt. Rainer in Winter
Date: 1972
Primary Maker: Yoshida, Toshi
Medium: woodblock print, ink and color on paper



Title: Evening in East Africa
Date: 1977
Primary Maker: Yoshida, Toshi
Medium: woodblock print, ink and color on paper



Title: From Katsuragiya

Date: 1983

Primary Maker: Yoshida, Toshi

Medium: woodblock print, ink and color on paper



Title: From Katsuragiya

Date: 1983

Primary Maker: Yoshida, Toshi

Medium: woodblock print, ink and color on paper



Title: Daisetsuzan

Date: designed in 1930, printed in 1984

Primary Maker: Yoshida, Toshi

Medium: woodblock print, ink and color on paper



Title: Tiruchchirappalli

Date: 1984

Primary Maker: Yoshida, Toshi

Medium: woodblock print, ink and color on paper



Title: Hyoroku

Date: designed in 1951, printed in 1985

Primary Maker: Yoshida, Toshi

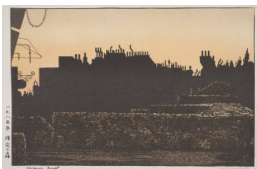
Medium: woodblock print, ink and color on paper

Title: San Francisco

Date: 1985

Primary Maker: Yoshida, Toshi

Medium: woodblock print, ink and color on paper



Title: Chimney Forest

Date: 1985

Primary Maker: Yoshida, Toshi

Medium: woodblock print, ink and color on paper



Title: Havana in 1954

Date: 1985

Primary Maker: Yoshida, Toshi

Medium: woodblock print, ink and color on paper



Title: Black Panther

Date: 1987

Primary Maker: Yoshida, Toshi

Medium: color woodblock print, ink and color on paper

**Title: Mt. Fuji from
Gotenba**

Date: 1987

Primary Maker: Yoshida, Toshi

Medium: woodblock print, ink
and color on paper

Title: Tancho Crane

Date: 1988

Primary Maker: Yoshida, Toshi

Medium: woodblock print, ink
and color on paper

**Title: One day in East
Africa no. 3**

Date: designed in 1981,
printed in 1991

Primary Maker: Yoshida, Toshi

Medium: woodblock print, ink
and color on paper



**Title: Dance of Eternal
Love**

Date: 1994

Primary Maker: Yoshida, Toshi

Medium: woodblock print, ink
and color on paper